

**SPECIFICATIONS:**

**MATERIALS:**

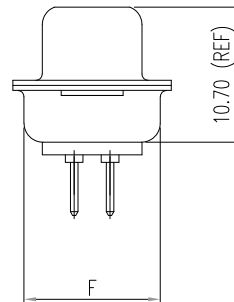
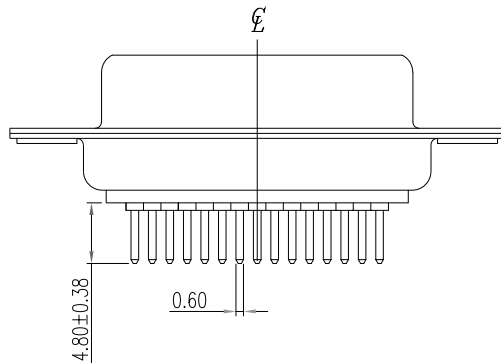
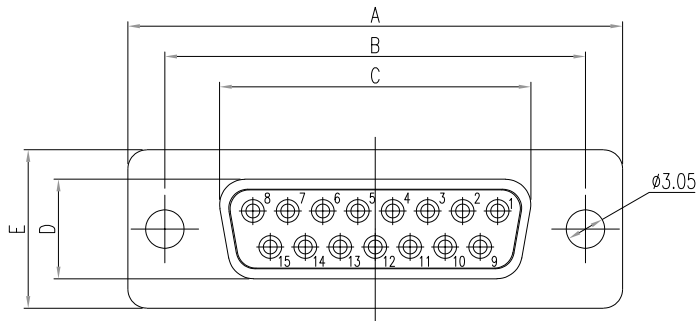
INSULATOR: GLASS-FILLED NYLON THERMOPLASTIC, UL94 V-0  
 PROCESS TEMP: 260°C  
 CONTACTS: GOLD PLATED BRASS  
 SHELL: NICKEL PLATED STEEL  
 SEALING MATERIAL: F04 FLEXIBLE ADHESIVE

**ELECTRICAL:**

RATED CURRENT: 5A  
 WORKING VOLTAGE: 250VAC  
 INSULATION RESISTANCE: 1000 MOhms MIN.  
 CONTACT RESISTANCE: 15 mOhms MAX.

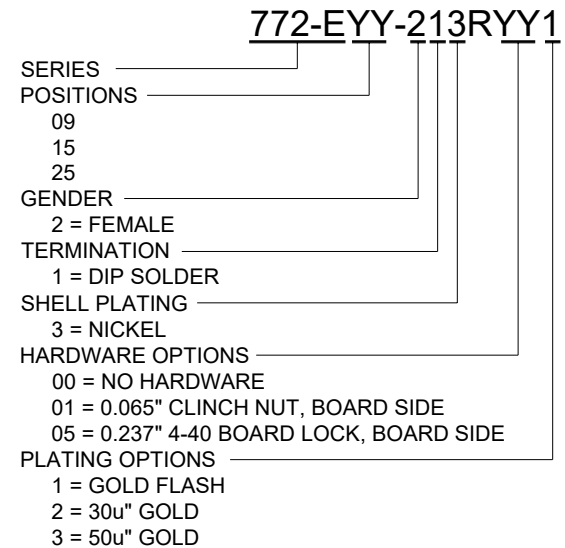
**ENVIRONMENT:**

OPERATING TEMPERATURE: -55°C TO +125°C



**MEETS IP67 STANDARDS**  
 (SEE PAGE 3 FOR SEALING DETAILS)

DIMENSIONS(mm)						
SIZE	A <sup>+0.39</sup> <sub>-0.39</sub>	B <sup>+0.25</sup> <sub>-0.25</sub>	C <sup>+0.25</sup> <sub>-0.25</sub>	D <sup>+0.25</sup> <sub>-0.34</sub>	E <sup>+0.38</sup> <sub>-0.38</sub>	F <sup>+0.25</sup> <sub>-0.25</sub>
9	30.81	24.99	16.33	7.90	12.55	10.80
15	39.19	33.32	24.66	7.90	12.55	10.80
25	53.04	47.04	38.38	7.90	12.55	10.80
37	69.32	63.50	54.84	7.90	12.55	10.80
50	67.00	61.10	52.20	10.90	15.40	13.30



**RoHS COMPLIANT**

UNITS = mm

**DO NOT SCALE FROM DRAWING**



THESE DRAWINGS AND SPECIFICATIONS ARE THE PROPERTY OF NorComp AND SHALL NOT BE REPRODUCED, COPIED OR USED AS THE BASIS FOR THE MANUFACTURE OR SALE OF APPARATUS WITHOUT WRITTEN PERMISSION.

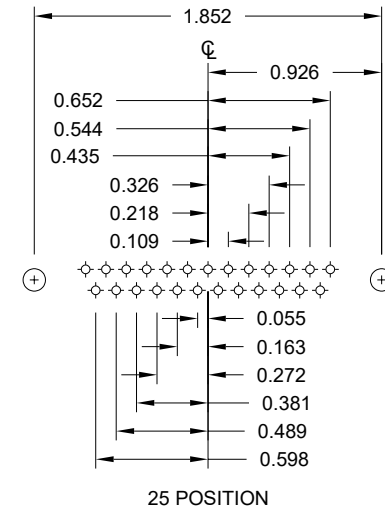
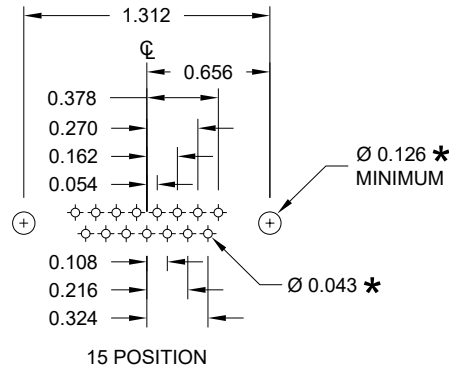
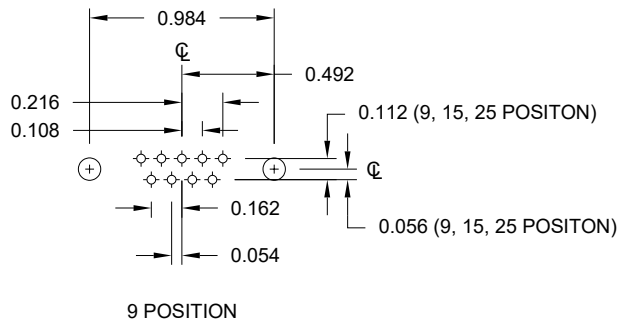
DRAWN:  
P. JENKINS

DATE:  
09/04/2008

**NorComp**

SCALE: NTS SHEET 1 OF 3 REV 12

DWG NO. 772-EYY-213RYY1



\* TYP.  
SUGGESTED SIZE  
MAY NOT BE SUITABLE FOR ALL APPLICATIONS

RoHS COMPLIANT

UNITS = inch

DO NOT SCALE FROM DRAWING



THESE DRAWINGS AND SPECIFICATIONS ARE THE PROPERTY OF NorComp AND SHALL NOT BE REPRODUCED, COPIED OR USED AS THE BASIS FOR THE MANUFACTURE OR SALE OF APPARATUS WITHOUT WRITTEN PERMISSION.

DRAWN:  
P. JENKINS

DATE:  
09/04/2008

NorComp

SCALE:  
NTS

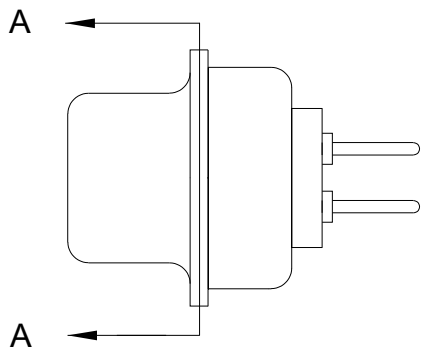
SHEET OF  
2 3

REV  
12

DWG NO.

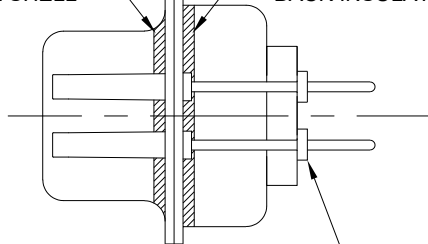
772-EYY-213RYY1

SEALING PROCESS



FRONT SEAL APPLIED BETWEEN FRONT INSULATOR AND FRONT METAL SHELL

MIDDLE SEAL APPLIED BETWEEN FRONT INSULATOR AND BACK INSULATOR

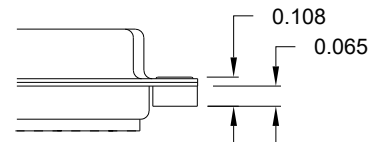


**\*\*NOTE\*\***  
SEALING MATERIAL SHALL NOT PROTRUDE PAST THE CONTACT SHOULDER

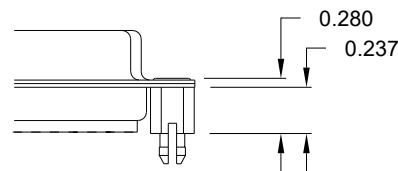
DETAIL A-A

HARDWARE OPTION

01X ..... 0.065" (BOARD SIDE)



05X ..... 0.237" (BOARD SIDE)



RoHS COMPLIANT



THESE DRAWINGS AND SPECIFICATIONS ARE THE PROPERTY OF NorComp AND SHALL NOT BE REPRODUCED, COPIED OR USED AS THE BASIS FOR THE MANUFACTURE OR SALE OF APPARATUS WITHOUT WRITTEN PERMISSION.

DRAWN:  
P. JENKINS

DATE:  
09/04/2008

UNITS = inch

DO NOT SCALE FROM DRAWING

NorComp

SCALE:  
NTS

SHEET 3 OF 3

REV 12

DWG NO.

772-EYY-213RYY1