

# CTSPMA6010F Series

From .47µH to 10µH



## SPECIFICATIONS

Parts are available in ±20% inductance tolerance only

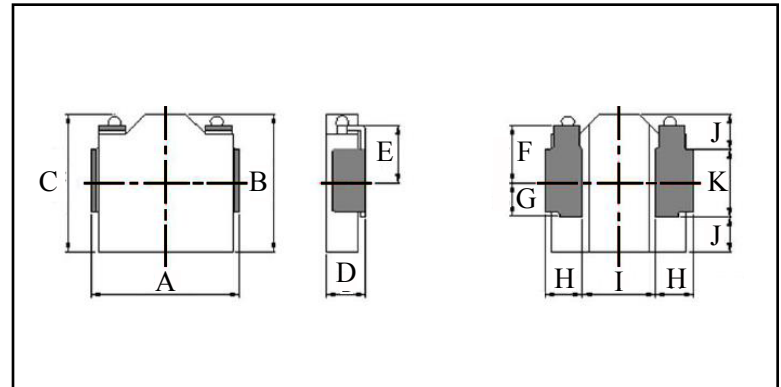
| Part Number      | Inductance (µH) | L Test Condition | DCR Max. (mΩ) | Isat Max. (A) | Irms Max. (A) |
|------------------|-----------------|------------------|---------------|---------------|---------------|
| CTSPMA6010F-R47M | 0.47            | 100KHz, 1V       | 41.2          | 9.4           | 4.2           |
| CTSPMA6010F-R68M | 0.68            | 100KHz, 1V       | 43.0          | 8.5           | 4.2           |
| CTSPMA6010F-1R0M | 1.00            | 100KHz, 1V       | 54.0          | 7.2           | 4.0           |
| CTSPMA6010F-1R5M | 1.50            | 100KHz, 1V       | 74.0          | 6.8           | 3.1           |
| CTSPMA6010F-2R2M | 2.20            | 100KHz, 1V       | 83.0          | 5.2           | 2.9           |
| CTSPMA6010F-3R3M | 3.30            | 100KHz, 1V       | 99.0          | 4.5           | 2.8           |
| CTSPMA6010F-4R7M | 4.70            | 100KHz, 1V       | 133.0         | 4.1           | 2.5           |
| CTSPMA6010F-6R8M | 6.80            | 100KHz, 1V       | 173.0         | 3.2           | 2.0           |
| CTSPMA6010F-100M | 10              | 100KHz, 1V       | 240.0         | 2.2           | 1.7           |

## PHYSICAL DIMENSIONS

| Size   | A          | B           | C     | D           | E     | F     |
|--------|------------|-------------|-------|-------------|-------|-------|
|        |            |             | Max.  | Max.        |       |       |
| mm     | 7.1±0.2    | 6.7±0.2     | 7.1   | 1.0         | 2.7   | 2.7   |
| inches | 0.28±0.008 | 0.26±0.008  | 0.28  | 0.039       | 0.106 | 0.106 |
| Size   | G          | H           | I     | J           | K     |       |
| mm     | 1.5        | 1.65±0.1    | 3.8   | 1.85±0.1    | 3.0   |       |
| inches | 0.059      | 0.065±0.004 | 0.150 | 0.073±0.004 | 0.118 |       |

## CHARACTERISTICS

**Description:** SMD (shielded) Power Inductors  
**Applications:** Smart phones, Notebook PC's, Tablets, HDD's, Servers, VRM's, Compact power supply modules, etc.  
**Saturation Rated Current (Isat):** The DC current when the when the inductance becomes 30% lower than its initial value. (Ta=25°C)  
**Temperature Rise Current (Irms):** The actual current when temperature of coil becomes ΔT40°C. (Ta=25°C)  
**Operating Temperature Range:** -55°C to 155°C  
**Markings:** Inductance Code  
**Miscellaneous:** RoHS compliant  
**Samples available. See website for ordering information.**



## PAD LAYOUT

