

Technical Data

Material:

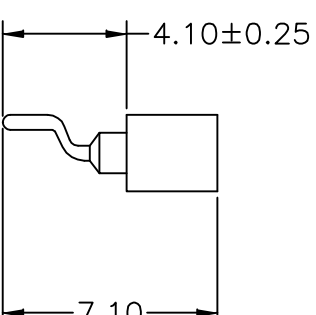
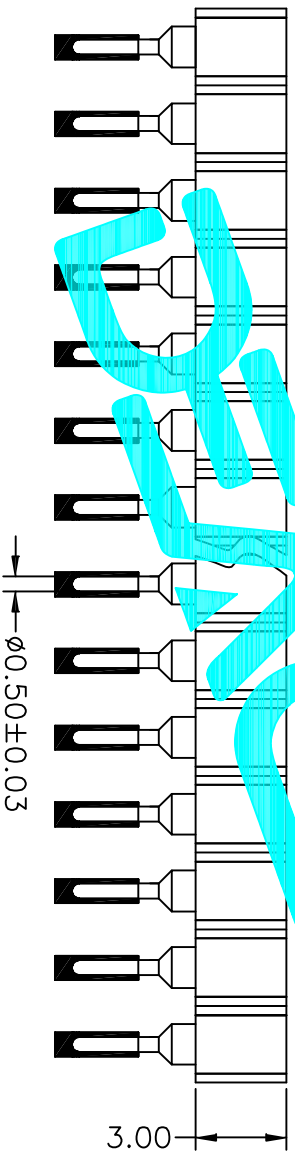
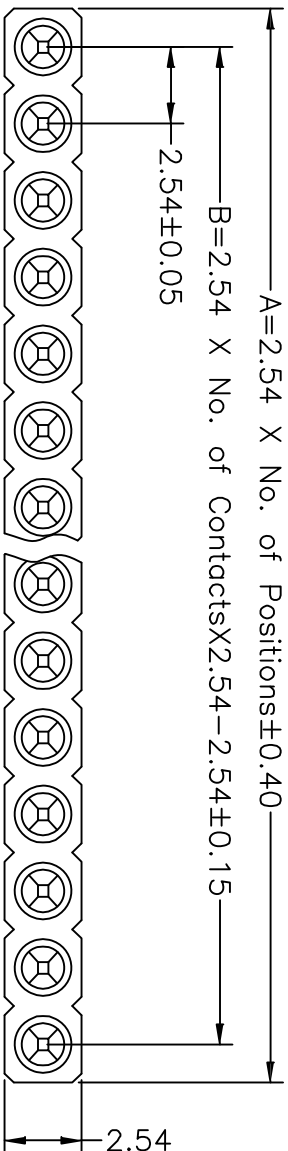
Pin(outer sleeve): Brass,machined CuZn38Pb2
 Clip(contact 4 finger): Beryllium Copper,heat treated
 Plating(outer sleeve):
 Tin plated:2µm/80µ"Ni, 5µm/200µ"Sn
 Gold Plated:2µm/80µ"Ni,Full gold
 Plating(contact): 2µm/80µ"Ni, gold or Tin plated
 Insulator(black): Glass filled thermoplastic polyester
 UL94V-0

Electrical:

Current rating: 3Amps/contact in ax.
 Contact resistance: 54mΩ/contact
 Insulation resistor: 100MΩ at V=100V

Operating temperature:

Mechanical:
 Average insertion force with steel pin of 0.63mm/0.117" <250g
 Average withdrawal force with steel pin of 0.63mm/0.117" >50g min.
 Mechanical life cycle:min.200
 Operating temperatures: Gold Plated:-55°C to+105°C
 Tin plated:-40°C to+105°C



APPROVALS		DATE	DRAWING NO.	
DRAWN	G.M.Chen	2015/7/17	MW254S-11-XX-73	
CHECKED			ELECTRONICS CO.,LTD	
APPROVALS			Connector	

ECN NO.	REV.	DATE.	DESCRIPTION.	CHANGE.	CHECK.	APPRO.	TOLERANCES ARE	ANGLE	UNIT:	SCALE:	SHEET	PROJ.
	A		NEW				30 ^{+0.15} 10 ^{+0.30} 5 ^{+0.10}	±2°	mm	1:1	1 OF 1	