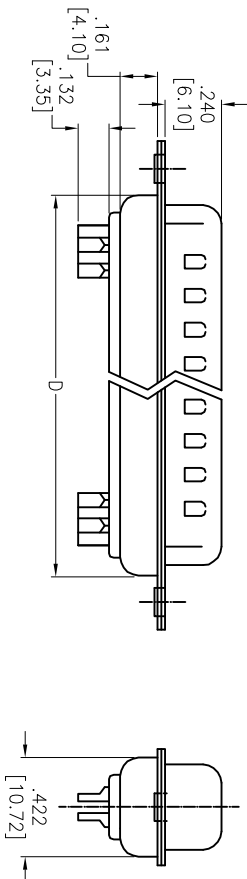
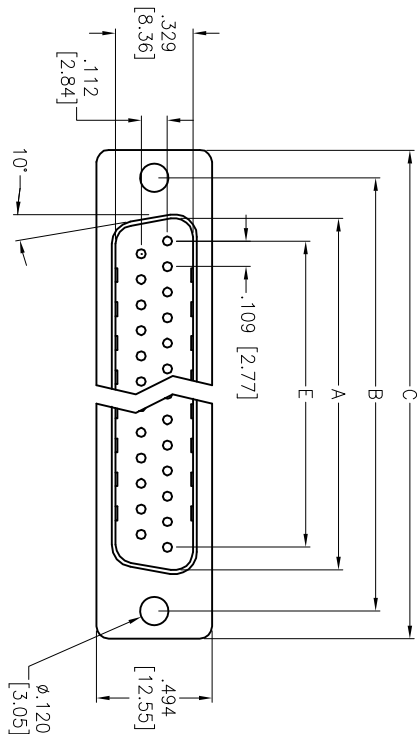


APPROVED: _____
 DATE: _____ TITLE: _____

Rev	AWO #	Description	Date	Appr
-		RELEASED	4/28/05	
A		UPDATED DRAWING	4/21/15	HR/LL



DXXX CONTACTS	DIMENSIONS				
	A	B	C	D	E
DE09	.666 [16.92]	.984 [24.99]	1.213 [30.81]	.756 [19.20]	.436 [11.08]
DA15	.994 [25.25]	1.311 [33.30]	1.543 [39.20]	1.091 [27.70]	.763 [19.39]
DB25	1.534 [38.96]	1.852 [47.04]	2.088 [53.04]	1.618 [41.10]	1.309 [33.24]
DC37	2.182 [55.42]	2.500 [63.50]	2.732 [69.40]	2.256 [57.30]	1.963 [49.86]

SPECIFICATIONS:
 Material: PBT, glass reinforced, rated UL 94V-0
 Insulator color: Black
 Contacts: Brass
 Front Shell: Steel, Nickel plated
 Back Shell: Steel, Tin plated
 Plating: Gold flash over Nickel underplate overall
 Electrical: Operating voltage: 250 VAC max
 Current rating: 3 Amps max
 Contact resistance: 20 mohms max
 Insulation resistance: 1,000 Mohms min @ 500 VDC
 Dielectric withstanding voltage: 1,000 VAC for 1 minute
 Environmental: Lead free, RoHS compliant

ADAM TECH
 909 Rahway Avenue, Union, NJ 07083
 Phone: 908-687-5000 Fax: 908-687-5710
 D-SUB PLUG; SOLDER CUP
 .120 [3.05] MOUNTING HOLES
 DXXX-PD
 SCALE: NTS
 SHEET 1 OF 1



UNLESS OTHERWISE SPECIFIED
 ALL DIMENSIONS ARE INCHES [MM]
 TOLERANCES: EXCEPT AS NOTED
 INCHES: .X ±.10 ØXX ±.015
 .XX ±.020 ØXXX ±.010
 .XXX ±.015
 APPROVALS: DRAWN: SS 4/28/05
 CHECKED: APPROVED: SIZE: X PART NO.: DXXX-PD
 REF: S00087T SCALE: NTS SHEET 1 OF 1