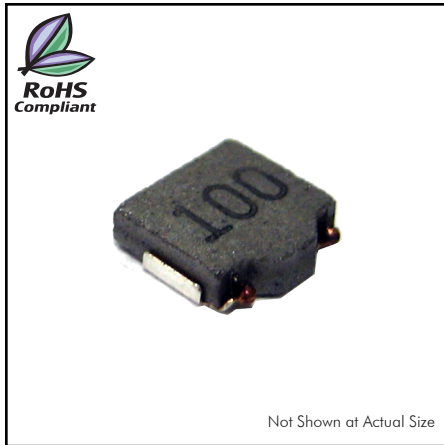


# CTSPMA4015F Series

From .47 $\mu$ H to 10 $\mu$ H



## SPECIFICATIONS

Parts are available in  $\pm 20\%$  inductance tolerance only

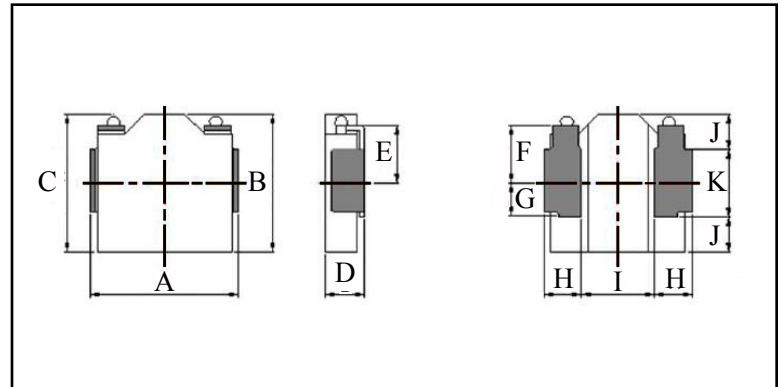
Part Number	Inductance ( $\mu$ H)	L Test Condition	DCR Max. (m $\Omega$ )	Isat Max. (A)	Irms Max. (A)
CTSPMA4015F-R47M	0.47	100KHz, 1V	11.3	12.0	8.3
CTSPMA4015F-R68M	0.68	100KHz, 1V	13.8	8.6	7.7
CTSPMA4015F-1R0M	1.00	100KHz, 1V	22.5	8.4	5.4
CTSPMA4015F-1R5M	1.50	100KHz, 1V	30.0	6.1	4.8
CTSPMA4015F-2R2M	2.20	100KHz, 1V	48.0	5.8	3.7
CTSPMA4015F-3R3M	3.30	100KHz, 1V	82.5	4.1	2.8
CTSPMA4015F-4R7M	4.70	100KHz, 1V	100.0	3.5	2.5
CTSPMA4015F-6R8M	6.80	100KHz, 1V	125.5	2.8	2.2
CTSPMA4015F-100M	10	100KHz, 1V	230.0	1.8	1.6

## PHYSICAL DIMENSIONS

Size	A	B	C	D	E	F
			Max.	Max.		
mm	4.4 $\pm$ 0.2	4.1 $\pm$ 0.2	4.4	1.5	1.60	1.60
inches	0.17 $\pm$ 0.008	0.16 $\pm$ 0.008	0.17	0.059	0.063	0.063
Size	G	H	I	J	K	
mm	1.0	1.10 $\pm$ 0.1	2.2	1.05 $\pm$ 0.1	2.0	
inches	0.039	0.043 $\pm$ 0.004	0.087	0.041 $\pm$ 0.004	0.079	

## CHARACTERISTICS

**Description:** SMD (shielded) Power Inductors  
**Applications:** Smart phones, Notebook PC's, Tablets, HDD's, Servers, VRM's, Compact power supply modules, etc.  
**Saturation Rated Current (Isat):** The DC current when the when the inductance becomes 30% lower than its initial value. (Ta=25°C)  
**Temperature Rise Current (Irms):** The actual current when temperature of coil becomes  $\Delta T 40^\circ\text{C}$ . (Ta=25°C)  
**Operating Temperature Range:** -55°C to 155°C  
**Markings:** Inductance Code  
**Miscellaneous:** RoHS compliant  
**Samples available. See website for ordering information.**



## PAD LAYOUT

