

6

5

4

3

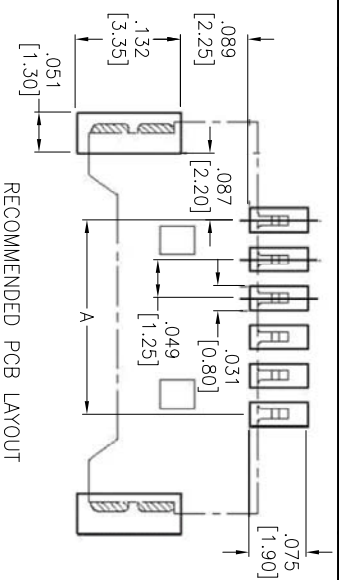
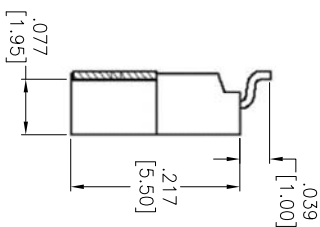
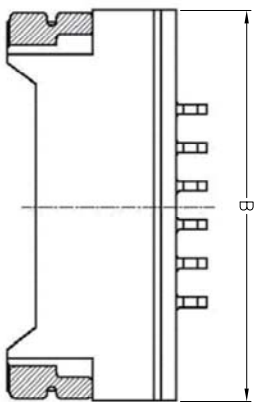
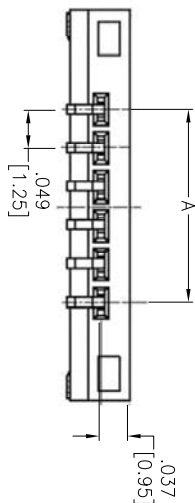
2

1

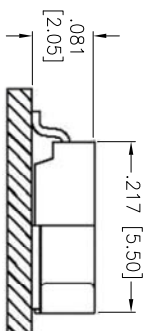
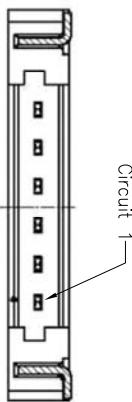
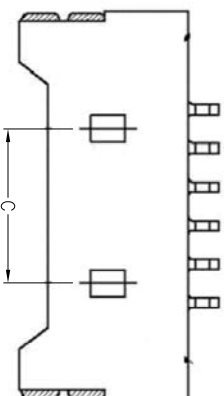
APPROVED: _____

DATE: _____ TITLE: _____

Rev	AWO #	Description	Date	Appr
-		RELEASED	7/27/10	
A		REDRAWN	10/2/14	HR/LL



RECOMMENDED PCB LAYOUT



ASSEMBLY VIEW

PACKAGED ON TAPE & REEL

Positions: 02 thru 16 and 18, 20, 22, 24, 26, 28, 30

A = .049 [1.25] x No. of Spaces

B = .049 [1.25] x No. of Spaces + .252 [6.40]

C = .049 [1.25] x No. of Spaces - .049 [1.25]

SPECIFICATIONS:

Material: Insulator: Hi-Temp Thermoplastic, rated UL 94V-0

Insulator color: Natural

Contacts: Phosphor Bronze

Plating: Matte Tin over Copper underplate overall.

Electrical: Operating voltage: 100 VAC/DC max

Current rating: AC/DC 1 Amps max

Contact resistance: 20 mohms max

Insulation resistance: 100 Mohms min

Dielectric withstanding voltage: 250 VAC for 1 minute

Mechanical: Temperature Rating: Operating temperature: -25°C to +85°C

Environmental: Lead free, RoHS compliant

Environmental: Lead free, RoHS compliant

ADAM TECH

909 Rahway Avenue, Union, NJ 07083
Phone: 908-687-5000 Fax: 908-687-5710

TITLE: .049 [1.25] WAFER, SMT, RIGHT ANGLE

TIN PLATED

UNLESS OTHERWISE SPECIFIED ALL DIMENSIONS ARE INCHES [MM]		TIN PLATED	
TOLERANCES: EXCEPT AS NOTED	HOLDS	SIZE	PART NO.
.X ± .10	ØXX ± .10	X	12SSH-G-XX-TR-SMT-T/R
.XX ± .020	ØXXX ± .015	REF: S00123T	SCALE: NTS
.XXX ± .015	ØXXXX ± .010	DATE	SHEET 1 OF 1
APPROVALS	DATE	REV. A	
DRAWN DY	7/27/10		
CHECKED			
APPROVED			



A

B

C

D

A

B

C

D

6

5

4

3

2

1