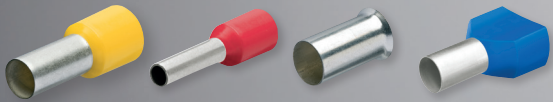


KNIPEX Quality – Made in Germany



# KNIPEX Wire End Ferrules

UL Certified



UL certified end ferrule crimp when used with select KNIPEX Crimping Pliers



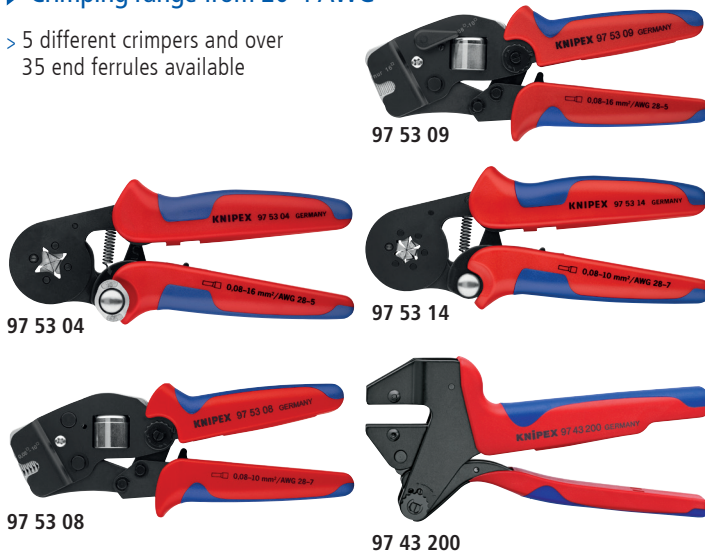


## KNIPEX Wire End Ferrules

▶ UL certified end ferrule crimp when used with select KNIPEX Crimping Pliers

▶ Crimping range from 20-4 AWG

> 5 different crimpers and over 35 end ferrules available



### Long Insulated End Ferrules

UL Certified when used with select KNIPEX Crimpers



Part Number	Insulation Color	mm <sup>2</sup>	AWG	Quantity Per Bag
97 99 350	white	0.5	20	200
97 99 351	gray	0.75	18	200
97 99 352	red	1	18	200
97 99 353	black	1.5	16	200
97 99 354	blue	2.5	14	200
97 99 355	gray	4	12	200
97 99 356	yellow	6	10	100
97 99 357	red	10	8	100
97 99 358	blue	16	6	100
97 99 359	yellow	25	4	50

### Crimping Tools for UL Certified Wire End Ferrules

97 99 330 to 97 99 399

Part Number	Description	AWG Range
97 53 04	crimping pliers, self-adjusting	28-8 and 6
97 53 08	crimping pliers, self-adjusting	28-8
97 53 09	crimping pliers, self-adjusting	28-8 and 6
97 53 14	crimping pliers, self-adjusting	28-8
97 43 200	crimp system master pliers	see individual dies below
97 49 08	crimping die for insulated & non-insulated ferrules (end sleeves)	24-10
97 49 09	crimping die for insulated & non-insulated ferrules (end sleeves)	8-4
97 49 18	crimping die for twin ferrules (end sleeves) for two flexible conductors	10-6

### Twin Insulated End Ferrules

UL Certified when used with select KNIPEX Crimpers



Part Number	Insulation Color	mm <sup>2</sup>	AWG	Quantity Per Bag
97 99 370	white	0.5	20	200
97 99 371	gray	0.75	18	200
97 99 372	red	1	18	200
97 99 373	black	1.5	16	200
97 99 374	blue	2.5	14	100
97 99 375	gray	4	12	50
97 99 376	yellow	6	10	50
97 99 377	red	10	8	50
97 99 378	blue	16	6	25

### Standard Insulated End Ferrules

UL Certified when used with select KNIPEX Crimpers



Part Number	Insulation Color	mm <sup>2</sup>	AWG	Quantity Per Bag
97 99 330	white	0.5	20	200
97 99 331	gray	0.75	18	200
97 99 332	red	1	18	200
97 99 333	black	1.5	16	200
97 99 334	blue	2.5	14	200
97 99 335	gray	4	12	200
97 99 336	yellow	6	10	100
97 99 337	red	10	8	100
97 99 338	blue	16	6	100
97 99 339	yellow	25	4	50

### Non-Insulated End Ferrules

UL Certified when used with select KNIPEX Crimpers



Part Number	mm <sup>2</sup>	AWG	Quantity Per Bag
97 99 390	0.5	20	200
97 99 391	0.75	18	200
97 99 392	1	18	200
97 99 393	1.5	16	200
97 99 394	2.5	14	200
97 99 395	4	12	200
97 99 396	6	10	100
97 99 397	10	8	100
97 99 398	16	6	100
97 99 399	25	4	50