

NUMBER 179862

METRIC
三角線 13rd ANGLE PROJECTION

METRIC

PRINT DIST
ALL DIMENSIONS IN MM. DO NOT SCALE PRINT

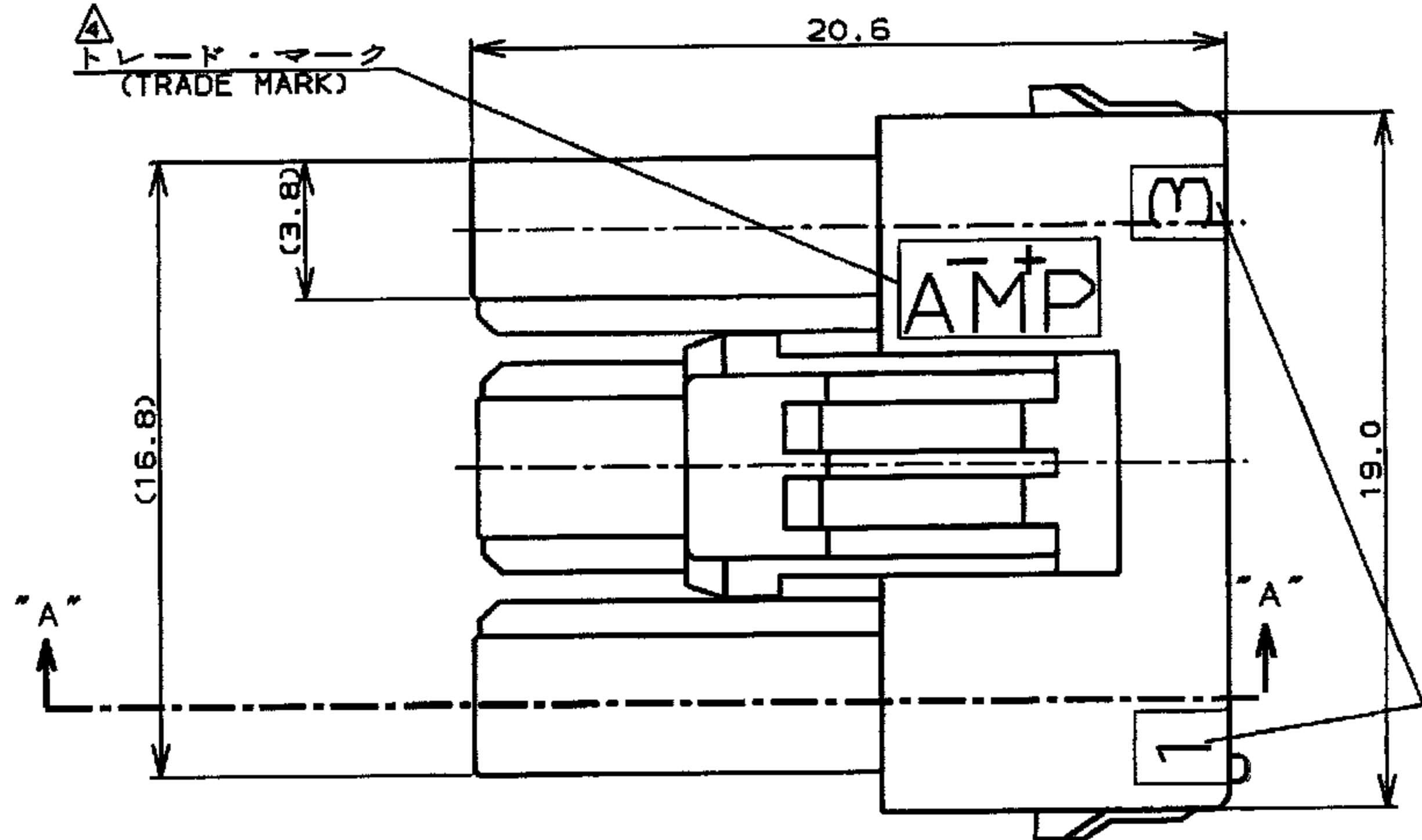
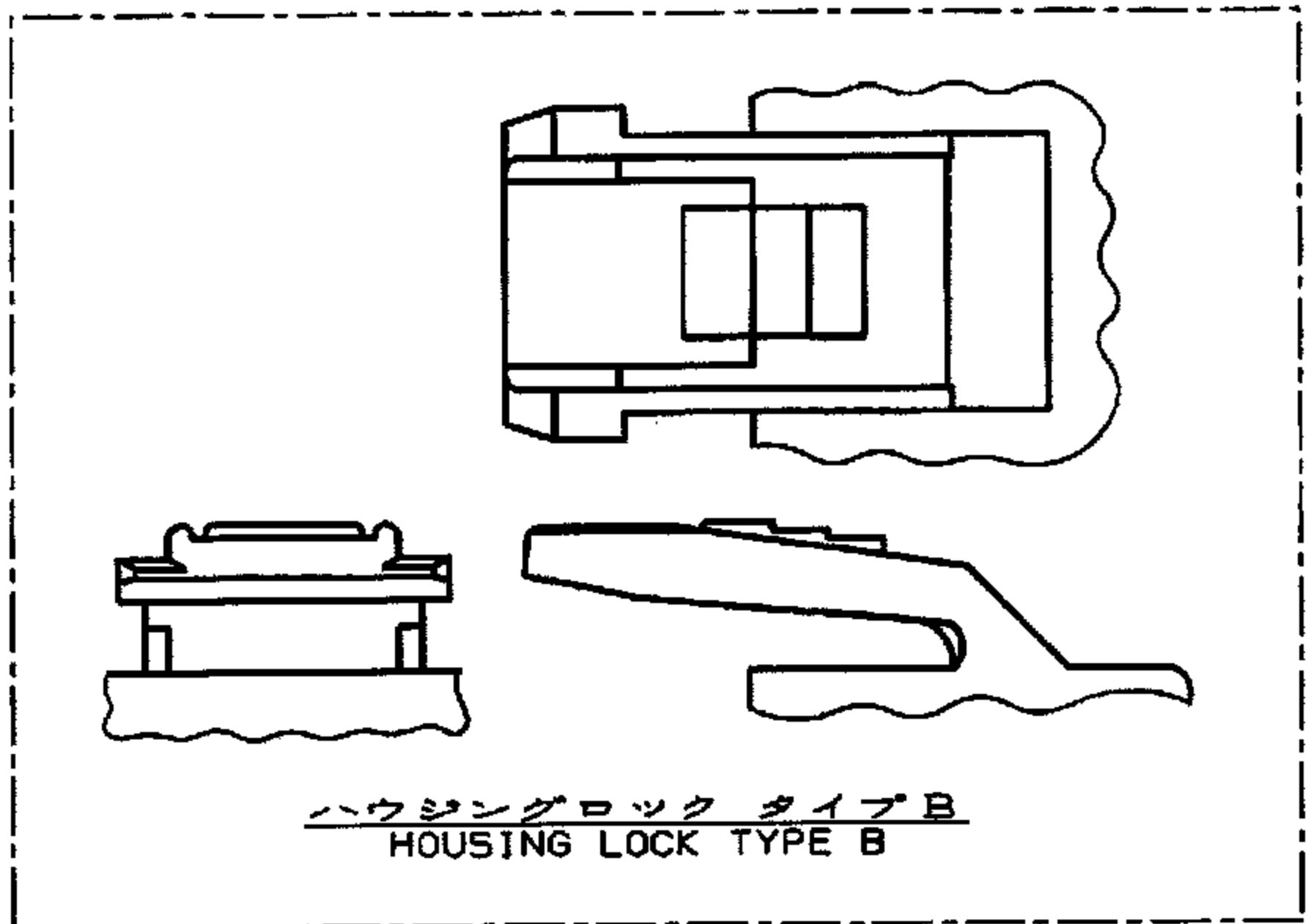
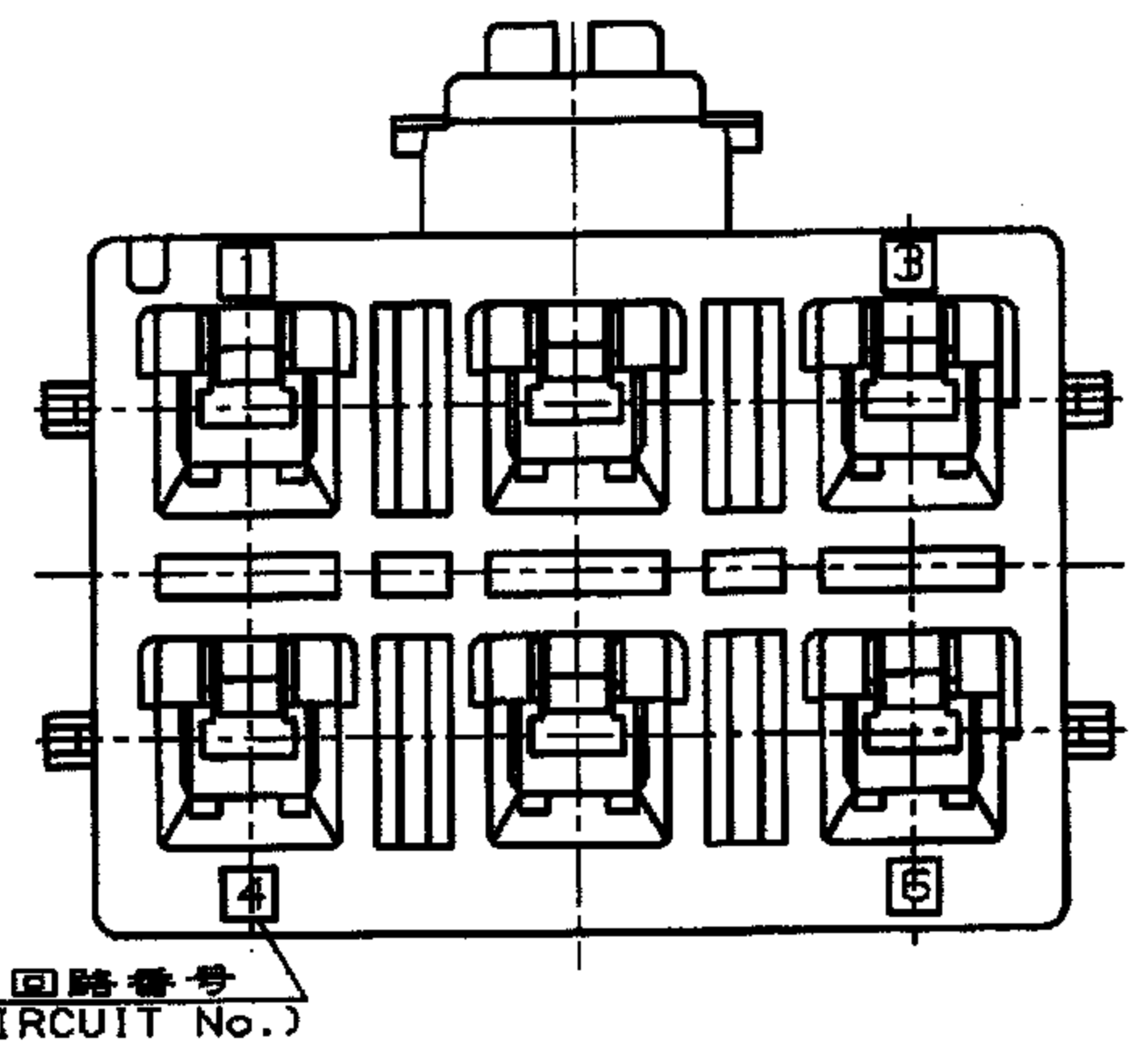
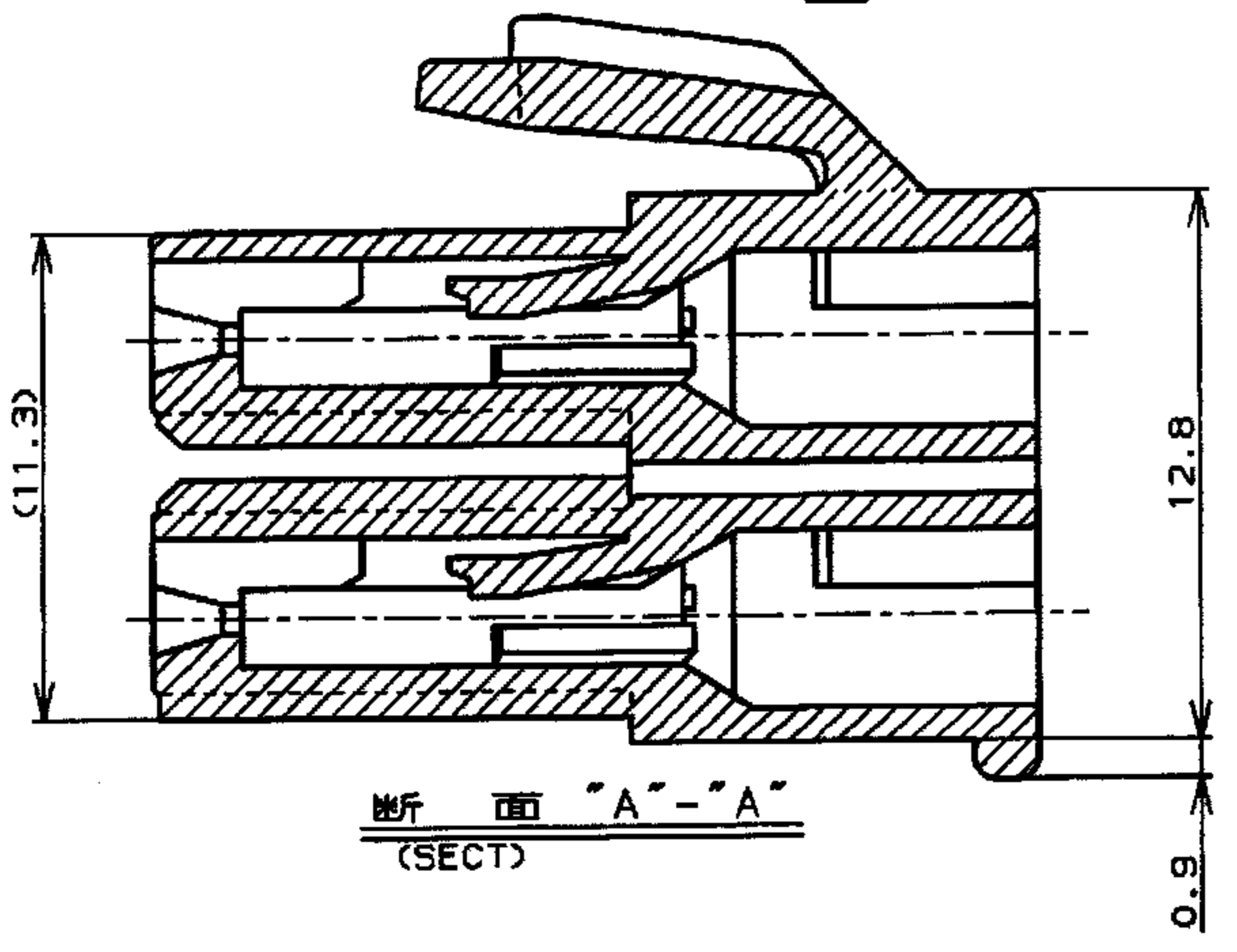
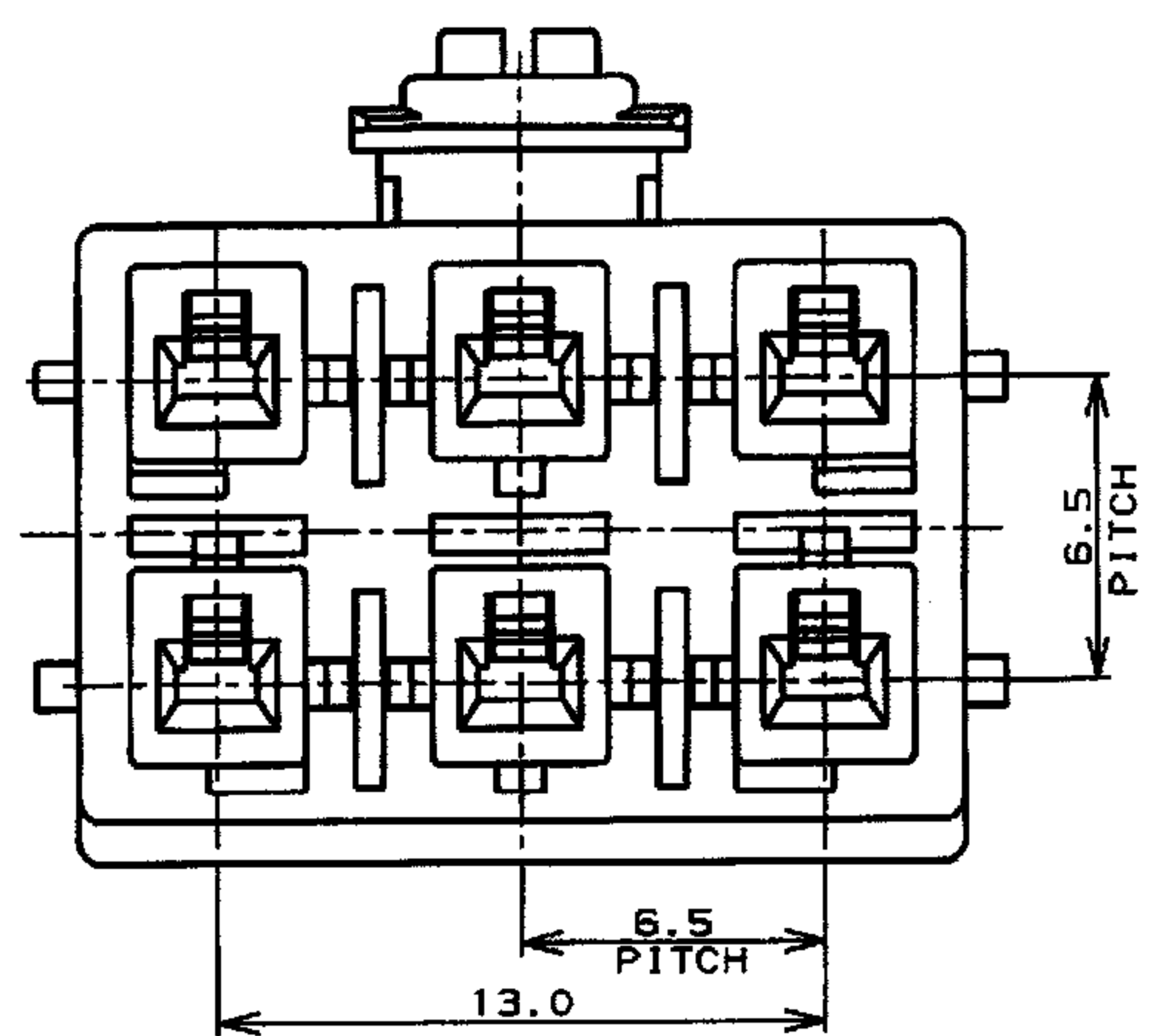


表1 (TABLE 1)

トレードマーク (TRADE MARK)	生産場所 (MANUFACTURING PLACE)
—AMP OR AMP	日本 (JAPAN)
—+AMP OR AMP	中国 (CHINA(PRC))
*AMP OR AMP	韓国 (KOREA)



本図 ハウジングロック タイプ A
AS SHOWN HOUSING LOCK TYPE A

- NOTES:
1. APPLICABLE CONTACT P/N
REC CONTACT: 177915-[X*20-#16AWG]
: 177914-[X*26-#22AWG]
 2. MATING CONN, P/N
HDR ASS'Y: 179849-[]
 3. PRODUCT SPEC : 108-5410
 4. SEE TABLE 1
 5. ALL PARTS MEET RTI ELECTRICAL RATING OF 105C ACCORDING TO UL 1977
 6. PART 5-179862-1 COMPLY WITH GLOW WIRE REQUIREMENT FOR PARTS OF NON-METALLIC MATERIAL SUPPORTING A CURRENT-CARRYING CONNECTION DETAILED IN IEC 60335-1, SECTION 30(GWT).

"B"	色 (COLOR)	Pos.	P/N
"B"	青 (BLUE)	6	2-179862-6
	黄 (YELLOW)	6	2-179862-4
	自然色 (NATURAL) < 白色 > (WHITE)	6	2-179862-1
"A"	自然色 (NATURAL)	6	5-179862-1
	青 (BLUE)	6	179862-6
	黄 (YELLOW)	6	179862-4
HOUSING LOCK	HOUSING COLOR	Pos.	P/N
	自然色 (NATURAL) < 白色 > (WHITE)	6	179862-1

<p>D2 REVISED ECR-13-012146 A. Z. F. M. 14AUG '13</p> <p>D1 REVISED ECR-12-013854 A. Z. F. M. 02AUG '12</p> <p>D REVISED FJ00-1369-01 M. M. S. 11JUL '91</p> <p>C REVISED FJ00-0953-98 T. Y. K. 24SEP '96</p> <p>B REVISED FJ00-5378-96 N. Y. Y. K. 30AUG '95</p> <p>A REVISED FJ00-3123-95 N. Y. Y. K. 08SEP '94</p> <p>O RELEASED FJ00-1170-94 N. Y. Y. K. 08SEP '94</p>				<p>RELEASED 6/6 ナイロン (UL94V-0) 6/6 NYLON (UL94V-0)</p> <p>仕上 (FINISH) ———</p>		<p>名称 (NAME) AMP POWER DOUBLE LOCK CONN. 6.5mmピッチ プラグハウジング (2列タイプ)</p> <p>AMP POWER DOUBLE LOCK CONN. 6.5mm PITCH PLUG HOUSING 6 Pos (DBL ROW)</p>	
<p>LTR 変更 (REVISION RECORD) DR CHK DATE</p>				<p>材料 (MATERIAL) 6/6 ナイロン (UL94V-0) 6/6 NYLON (UL94V-0)</p> <p>DR. N. YAMASAKI DE. N. YAMASAKI</p> <p>CHK. Y. KASHIWA APP. Y. KASHIWA</p>		<p>一般公差 10以下: ±0.2 10以上-30以下: ±0.25 30以上-100以下: ±0.3 角 度: ±3°</p> <p>SIZE LOC 番号 (No.) A3 J C-179862</p> <p>尺度 (SCALE) REV. SHEET D2 1 OF 1</p>	

AMP Tyco Electronics AMP K.K. Kawasaki, Japan

CUSTOMER DRAWING