

## CTSPMA5020F Series

From .47 $\mu$ H to 10 $\mu$ H



### SPECIFICATIONS

Parts are available in  $\pm 20\%$  inductance tolerance only

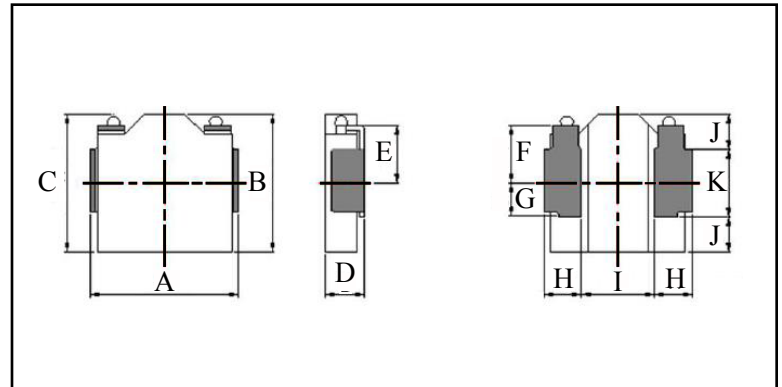
Part Number	Inductance ( $\mu$ H)	L Test Condition	DCR Max. (m $\Omega$ )	Isat Max. (A)	Irms Max. (A)
CTSPMA5020F-R47M	0.47	100KHz, 1V	7.2	18.0	11.2
CTSPMA5020F-R68M	0.68	100KHz, 1V	9.0	16.3	9.7
CTSPMA5020F-1R0M	1.00	100KHz, 1V	14.2	14.0	7.5
CTSPMA5020F-1R5M	1.50	100KHz, 1V	19.7	10.0	6.5
CTSPMA5020F-2R2M	2.20	100KHz, 1V	26.2	9.6	5.6
CTSPMA5020F-3R3M	3.30	100KHz, 1V	40.5	6.6	4.3
CTSPMA5020F-4R7M	4.70	100KHz, 1V	54.1	4.7	3.7
CTSPMA5020F-6R8M	6.80	100KHz, 1V	80.0	4.2	3.1
CTSPMA5020F-100M	10	100KHz, 1V	152.0	3.6	2.1

### PHYSICAL DIMENSIONS

Size	A	B	C	D	E	F
			Max.	Max.		
mm	5.4 $\pm$ 0.2	5.1 $\pm$ 0.2	5.4	2.0	2.0	2.0
inches	0.21 $\pm$ 0.008	0.20 $\pm$ 0.008	0.21	0.079	0.079	0.079
Size	G	H	I	J	K	
mm	1.25	1.20 $\pm$ 0.1	3.0	1.30 $\pm$ 0.1	2.5	
inches	0.049	0.047 $\pm$ 0.004	0.118	0.051 $\pm$ 0.004	0.098	

### CHARACTERISTICS

**Description:** SMD (shielded) Power Inductors  
**Applications:** Smart phones, Notebook PC's, Tablets, HDD's, Servers, VRM's, Compact power supply modules, etc.  
**Saturation Rated Current (Isat):** The DC current when the when the inductance becomes 30% lower than its initial value. (Ta=25°C)  
**Temperature Rise Current (Irms):** The actual current when temperature of coil becomes  $\Delta T 40^\circ\text{C}$ . (Ta=25°C)  
**Operating Temperature Range:** -55°C to 155°C  
**Markings:** Inductance Code  
**Miscellaneous:** RoHS compliant  
**Samples available. See website for ordering information.**



### PAD LAYOUT

