



Introducing
Corcom CU Series
1U Height Power Entry Modules

KEY FEATURES

- Compact 1U (1 3/4") Design
- 1A-15A*
- Filtered and Unfiltered
- SPST Switch
- Shrouded Quick-Connect Terminals
- Various Mounting Styles
- Lower Power Dissipation
- Higher System Efficiency
- Lower Cooling Demand
- Underwriters Laboratories Recognized, CSA Certified and VDE Approved*

* 15A versions tested by Underwriters Laboratories to US and Canadian requirements and are VDE approved at 10A @ 250 VAC.

DESCRIPTION

The CU series joins the Corcom product family of Power Entry Modules, filling the need for smaller versions of our switched inlet filters and unfiltered power inlets. This series provides power entry for equipment designed for popular 1U (1¾") height equipment racks. The filtered versions provide complete shielding, shrouded quick connect terminals and basic filtering for 1A to 15A applications, in an extremely compact size.

The design is available in snap-in and flanged mounting options. Filtered versions are also available in a new rear mount style which provides a flush appearance with enhanced EMI shielding. The unfiltered inlet snap-in versions are available in three different configurations to fit a wide variety of panel cut-outs and thicknesses and with optional pre-connected terminals from the socket to the switch. The CU Series features a common IEC 60320-1 C-14 power inlet for international compatibility. Refer to the C, GG, P, and M Series PEMs for applications requiring additional features.

APPLICATIONS

Rack mounted equipment, telecom, consumer electronics, power supplies, routers, PCs, TVs, lighting, imaging equipment, set-top boxes and other applications with limited panel space.

STANDARD AND SPECS

Maximum Leakage current, each line to ground (filtered models only) :

@120 VAC 60 Hz : .25 mA and @ 250 VAC 50 Hz: .40 mA

Hipot rating (one minute) : line-to-ground 1500 VAC, line-to-line 1450 VDC

Operating Frequency : 50/60 Hz

Rated Voltage : 250 VAC

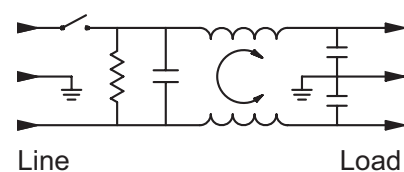
Rated currents : 1A, 3A, 6A, 10A, 15A

Operating Voltage : 120/250 VAC

Switch : Single pole single throw

Terminal Push-on Force : 15 lb / 67 N (max)

ELECTRICAL SCHEMATICS





PRODUCT OFFERING : PART NUMBERS

Filtered Versions			Unfiltered Versions	
1CUFE1	1CUFS1	1CUFF1	15CUE1	15CUBE1*
3CUFE1	3CUFS1	3CUFF1	15CU15S1	15CU15BS1*
6CUFE1	6CUFS1	6CUFF1	15CU10S1	15CU10BS1*
10CUFE1	10CUFS1	10CUFF1	15CUS1	15CUBS1*
15CUFE1	15CUFS1	15CUFF1		

* Pre-connected terminals

CASE DIMENSIONS

Part Numbers	A (max)	B (max)	C (max)	D ± 0.004 ± 0.100	E ± 0.004 ± 0.100	F ± 0.004 ± 0.100	Panel Thickness
CUE1, CUBE1	1.73 <i>43.90</i>	0.96 <i>24.60</i>	1.34 <i>34.10</i>	1.06 <i>26.90</i>	1.09 <i>27.60</i>	1.45 <i>36.80</i>	-
CUS1, CUBS1	1.20 <i>30.60</i>	0.97 <i>24.60</i>	1.34 <i>34.10</i>	1.04 <i>26.40</i>	1.26 <i>32.00</i>	-	.025 - .082 <i>[0.63 - 2.1]</i>
CU10S1, CU10BS1	1.20 <i>30.60</i>	0.97 <i>24.60</i>	1.34 <i>34.10</i>	1.05 <i>26.70</i>	1.24 <i>31.60</i>	-	.028 - .039 <i>[0.7 - 1.0]</i>
CU15S1, CU15BS1	1.20 <i>30.60</i>	0.97 <i>24.60</i>	1.34 <i>34.10</i>	1.05 <i>26.70</i>	1.24 <i>31.60</i>	-	.047 - .059 <i>[1.2 - 1.5]</i>
CUFE1	1.73 <i>43.90</i>	1.75 <i>44.50</i>	1.34 <i>34.10</i>	1.11 <i>28.10</i>	1.26 <i>31.90</i>	1.45 <i>36.80</i>	-
CUFS1	1.20 <i>30.60</i>	1.80 <i>45.00</i>	1.34 <i>34.10</i>	1.11 <i>28.10</i>	1.26 <i>32.00</i>	-	.025 - .082 <i>[0.63 - 2.1]</i>
CUFF1	1.70 <i>43.10</i>	1.80 <i>45.00</i>	1.34 <i>34.10</i>	1.21 <i>30.80</i>	1.35 <i>34.30</i>	1.45 <i>36.80</i>	.157 <i>[4.0] Max</i>

NOTE : Dimensions are in inches and millimeters unless otherwise specified. Values in italics are metric equivalents. Dimensions are shown for reference purposes only. Specification subject to change.

MINIMUM INSERTION LOSS IN dB

Line-to-ground in 50 ohm Circuit

Current Rating	Frequency MHz						
	.05	.15	0.5	1	5	10	30
1A	19	30	44	49	47	44	45
3A	13	23	37	43	47	44	49
6A	5	14	28	34	43	43	48
10A	1	7	19	25	35	36	52
15A	-	1	10	13	25	27	42

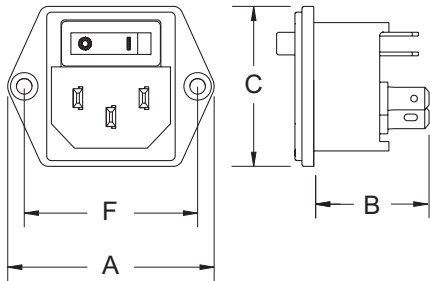
Line-to-line in 50 ohm Circuit

Current Rating	Frequency MHz						
	.05	.15	0.5	1	5	10	30
1A	1	10	21	26	48	51	60
3A	1	10	20	26	42	45	65
6A	1	10	20	23	38	41	65
10A	1	10	20	23	29	34	56
15A	1	10	20	23	28	39	54

**Corcom CU Series
1U Height Power
Entry Modules**

CASE DIMENSIONS cont.

CUE1



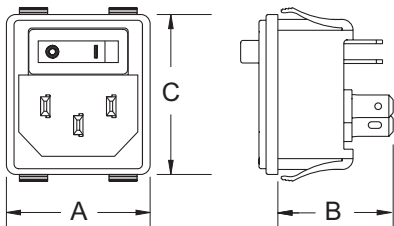
Typical Dimensions

Line Inlet (1) : IEC 60320-1 C14

Load/Switch Terminals (5) : .188 [4.8] with .07 [1.8] Dia. hole

Ground Terminal (1) : .188 [4.8] with .16 x .07 [4.1 x 1.8] slot

CUS1



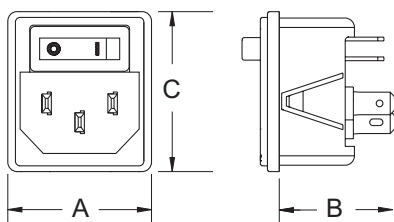
Typical Dimensions

Line Inlet (1) : IEC 60320-1 C14

Load/Switch Terminals (5) : .188 [4.8] with .07 [1.8] Dia. hole

Ground Terminal (1) : .188 [4.8] with .16 x .07 [4.1 x 1.8] slot

CU10S1, CU15S1



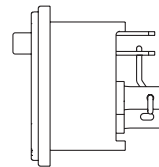
Typical Dimensions

Line Inlet (1) : IEC 60320-1 C14

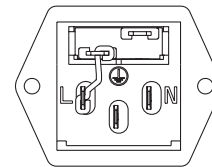
Load/Switch Terminals (5) : .188 [4.8] with .07 [1.8] Dia. hole

Ground Terminal (1) : .188 [4.8] with .16 x .07 [4.1 x 1.8] slot

CUBE1 Pre-Connected Terminals

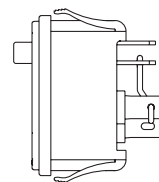


Side View

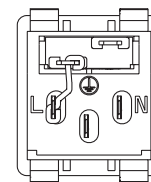


Rear View

CUBS1 Pre-Connected Terminals

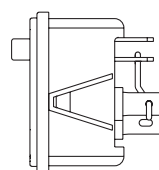


Side View

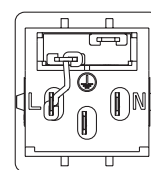


Rear View

CU10BS1, CU15BS1 Pre-Connected Terminals



Side View

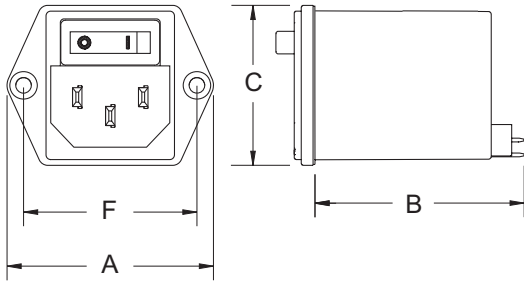


Rear View

Note : Switch output terminal configurations for any unfiltered version may vary from that shown here. Dimensions are not affected

CASE DIMENSIONS cont.

CUFE1



Typical Dimensions

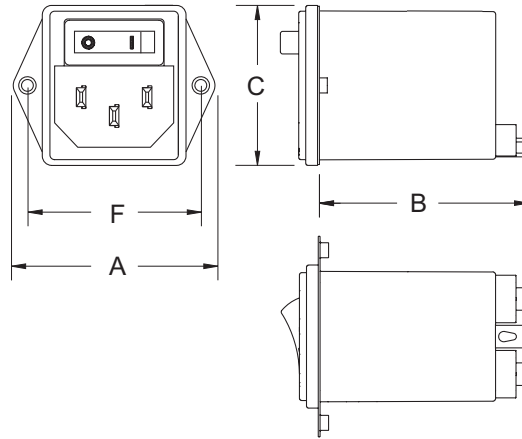
Mounting holes (2) : .132 [3.35] Dia. with .260 [6.6] Dia. x 90° countersink for #4 or M3 flathead screw

Line Inlet (1) : IEC 60320-1 C14

Load Terminals (2) : .188 [4.8] with .07 [1.8] Dia. hole

Ground Terminal (1) : .188 [4.8] with .16 x .07 [4.1 x 1.8] slot

CUFF1



Typical Dimensions

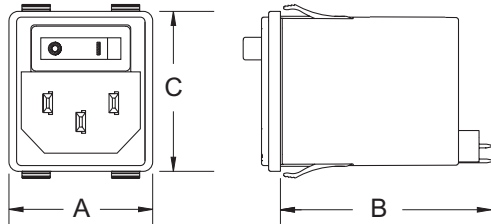
Mounting holes (2) : M3 x .5

Line Inlet (1) : IEC 60320-1 C14

Load Terminals (2) : .188 [4.8] with .07 [1.8] Dia. hole

Ground Terminal (1) : .188 [4.8] with .16 x .07 [4.1 x 1.8] slot

CUFS1



Typical Dimensions

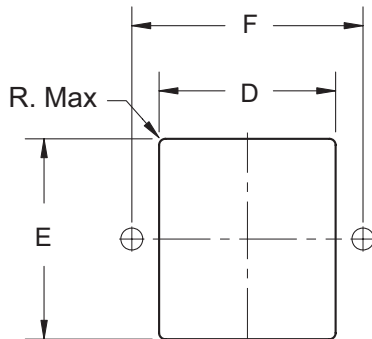
Line Inlet (1) : IEC 60320-1 C14

Load Terminals (2) : .188 [4.8] with .07 [1.8] Dia. hole

Output Shroud, Inside dimension : .21 x .34 [5.2 x 8.6]

Ground Terminal (1) : .188 [4.8] with .16 x .07 [4.1 x 1.8] slot

RECOMMENDED PANEL CUTOUT



Panel Thickness

CUFS1, CUS1	.025 - .082 [0.63 - 2.1]
CU10S1	.028 - .039 [0.7 - 1.0]
CU15S1	.047 - .059 [1.2 - 1.5]
CUFF1	.157 [4.0] Max

Note : R=1.8 [45.72] for CUFF1, 1.0 [25.4] for all others.

FOR MORE INFORMATION

Technical Support

Corcom Phone	847.573.6597
Internet:	www.tycoelectronics.com/help www.corcom.com
E-mail:	newproducts@tycoelectronics.com
USA:	+1 (800) 522-6752
Canada:	+1 (905) 470-4425
Mexico & Central America:	+52(0) 55-1106-0814
South America:	+55 (0) 11-2103-6000
Germany:	+49 (0) 6251-133-1999
UK:	+44 (0) 800-867666
France:	+33 (0) 1-3420-8686
Netherlands:	+31 (0) 73-6246-999
China:	+86 (0) 400-820-6015

Tyco Electronics Corporation
Harrisburg, PA

tycoelectronics.com

© 2010 Tyco Electronics Corporation. All Rights Reserved.

1773455-1 CIS PDF 01/2010

Corcom, TE (logo) and Tyco Electronics are trademarks of the Tyco Electronics group of companies and its licensors. Other products, logos, and Company names mentioned herein may be trademarks of their respective owners.

While Tyco Electronics has made every reasonable effort to ensure the accuracy of the information in this catalog, Tyco Electronics does not guarantee that it is error-free, nor does Tyco Electronics make any other representation, warranty or guarantee that the information is accurate, correct, reliable or current. Tyco Electronics reserves the right to make any adjustments to the information contained herein at any time without notice. Tyco Electronics expressly disclaims all implied warranties regarding the information contained herein, including, but not limited to, any implied warranties of merchantability or fitness for a particular purpose. The dimensions in this catalog are for reference purposes only and are subject to change without notice. Specifications are subject to change without notice. Consult Tyco Electronics for the latest dimensions and design specifications.



Tyco Electronics
Our commitment. Your advantage.