

6

5

4

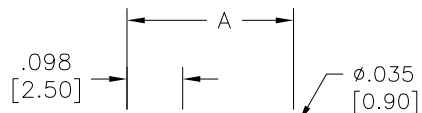
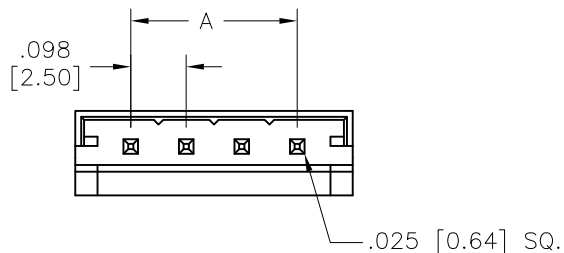
3

2

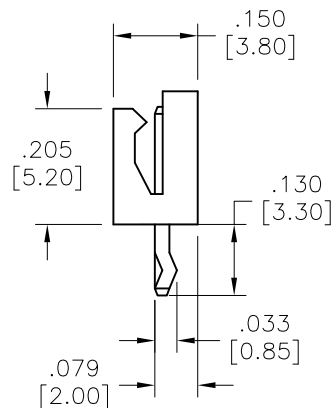
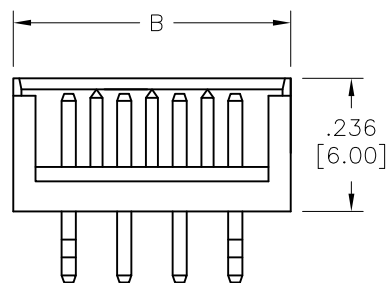
1

APPROVED: _____
DATE: _____ TITLE: _____

Rev	AWO #	Description	Date	Appr
-		RELEASED	9/19/05	
A		REDRAWN	4/16/10	
B		ADDED DIM.	12/1/15	AYYC
C		UPDATE DRAWING	12/24/20	OW/LX



RECOMMENDED PCB LAYOUT



SPECIFICATIONS:

Material:
Insulator: Nylon, rated UL 94V-0
Insulator color: Nature
Contacts: Brass

Plating:
Tin over Copper underplate overall

Electrical:
Voltage rating: 250V AC, DC
Current rating: 3A AC, DC
Insulation resistance: 1000 Mohms min
Dielectric withstanding voltage: 800 VAC for 1 minute

Temperature Rating:
-25°C to +85°C

Environmental:
Lead free, RoHS compliant.



Positions: 02 thru 12
A= .098 [2.50] x No. of Space
B= .098 [2.50] x No. of Space + .197 [5.00]

UNLESS OTHERWISE SPECIFIED
ALL DIMENSIONS ARE INCHES [MM]
TOLERANCES: EXCEPT AS NOTED
INCHES HOLES
.X ±.10 ØX ±.10
.XX ±.020 ØXX ±.015
.XXX ±.015 ØXXX ±.010



909 Rahway Avenue,
Union, NJ 07083
Phone: 908-687-5000
Fax: 908-687-5710

APPROVALS		DATE
DRAWN	SS	9/19/05
CHECKED		
APPROVED		

TITLE 2.5MM SHROUDED HEADER, SINGLE ROW, TIN PLATED		
SIZE X	PART NO. 25SH-C-XX-TS	REV. C
REF: S00016T	SCALE: NTS	SHEET 1 OF 1

6

5

4

3

2

1