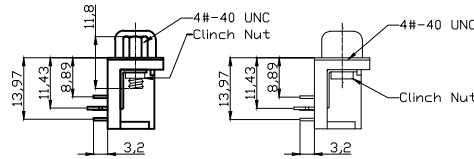
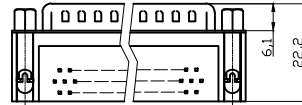
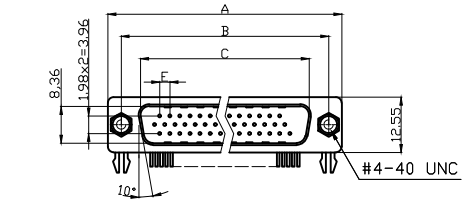
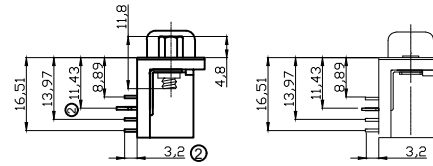
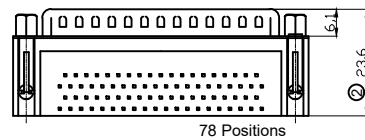
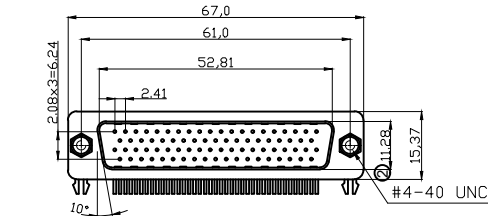


Male



⑨ Without Screwlock



⑨ Without Screwlock

Product Specification

Material

Insulator :Glass-Filled Thermoplastic PBT,UL94V-0 rated ,Black
 Ⓞ Contact : Copper alloy, Plating: refer to table1
 Shell : Steel,100u" Tin Over 50u" min Copper
 Clinch Nut: Brass, 100u" min Nickel Plated.
 Boardlock :Brass, 100u" min Nickel Plated.
 Screwlock :Brass, 100u" min Nickel Plated.

Electrical

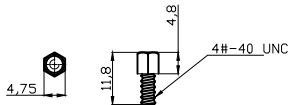
Contact Resistance :20 milliohms Max at 1 AMP DC.
 Insulation Resistance :1000 magohms at 500 VDC
 Dielectric Withstanding Voltage : 1000 VAC/rms 60Hz for 1 minute
 Current Rating :3 AMP
 Volatge Rating :250 VAC/rms 60Hz
 Ⓞ Operating Temperature: -55°C ~ +105°C

⑧ Order Code:

A-HDx xx A-KG/x
 Contact style: F - Female, S - Male
 Table 1
 No. of Contacts: 15 / 26 / 44 / 62 / 78
 Standard: Quality class III

⑨ Table 1:

⑬ ⑫	T	Full Gold flash with Screwlock UNC, with Clinch Nut
⑫	TS	Selective Gold flash/Tin with Screwlock UNC,with Clinch Nut
⑬ ⑫	T3	Full Gold flash without Screwlock UNC,with Clinch Nut
	T3S	Selective Gold flash/Tin without Screwlock UNC,with Clinch Nut
⑩	T5	Selective Gold 30µ"/Tin with Screwlock UNC,with Clinch Nut
	T5S	Selective Gold 30µ"/Tin without Screwlock UNC,with Clinch Nut
⑩	T7	Selective Gold 15µ"/Tin with Screwlock UNC,with Clinch Nut
⑩	T7S	Selective Gold15µ"/Tin without Screwlock UNC,with Clinch Nut



#4-40 unc screwlock installed

Dimensions

Positions	A	B	C	E	G	H
15	30.81	24.99	16.92	2.29	1.145	7.04
26	39.20	33.30	25.25	2.29	1.145	6.88
44	53.05	47.04	38.96	2.29	1.145	6.88
62	69.40	63.50	55.42	2.41	1.205	7.00

RoHS compliant
Unit: mm

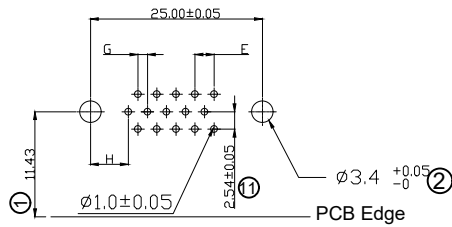
Scale	Free	⑬	Modification	Date	Name
TOLERANCE		⑫	correct p/n T to T3 & T3 to T	03.12.2018	Hellwig
X.	±0.38	⑫	Change T1 to T and update TS & T3	20.08.2018	Xavier
X.X	±0.25	⑪	Update row pitch of PCB layout	20.08.2018	Xavier
X.XX	±0.13	⑩	Add the plating 15u"Au	06.08.2018	Winnie
DIM	TOL	⑨	Update	26.06.2018	Xavier
X.°	±3°				
X.X°	±1.0°	⑧	Update	31.05.2018	Segal
Angle	TOL	Id.	Modification	Date	Name



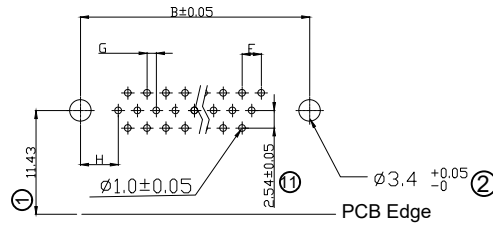
Customer-No.	
ASSMANN WSW-No.	A-HDx xx A-KG/x
Drawing-No.	ASS 4897 CO rev13
Replace	Sheet 1/5

Male

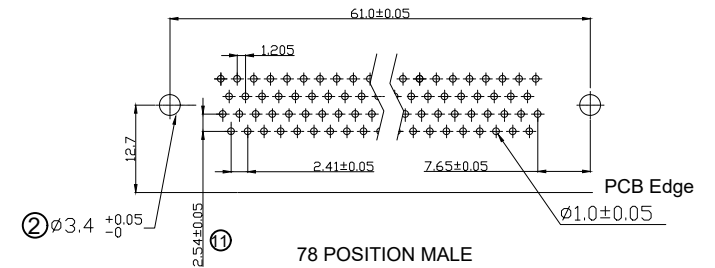
P.C.B LAYOUT PATTERN



15 POSITION MALE

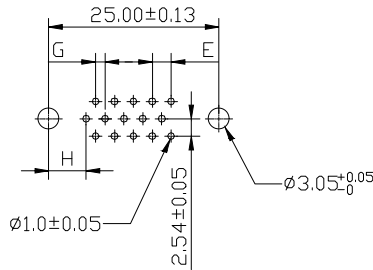


26,44,62 POSITION MALE

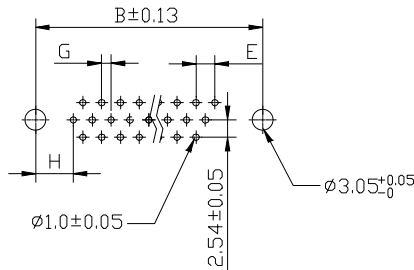


78 POSITION MALE

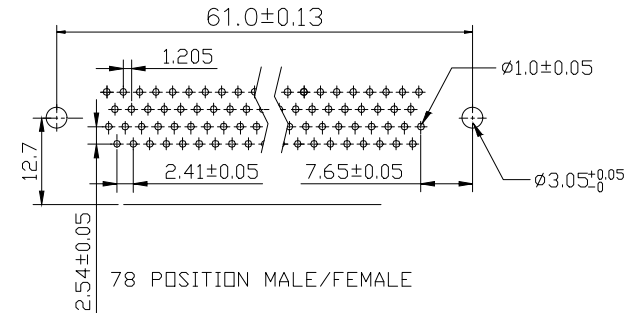
Ⓢ P.C.B LAYOUT PATTERN for Without Screwlock



15 POSITION MALE



26,44,62 POSITION MALE



78 POSITION MALE/FEMALE

Dimensions

Positions	A	B	C	E	G	H
15	30.81	24.99	16.92	2.29	1.145	7.04
26	39.20	33.30	25.25	2.29	1.145	6.88
44	53.05	47.04	38.96	2.29	1.145	6.88
62	69.40	63.50	55.42	2.41	1.205	7.00

RoHS compliant
Unit: mm

Scale	Free	⑬	correct p/n T to T3 & T3 to T	03.12.2018	Hellwig	Date	Name	Customer-No.
TOLERANCE		⑫	Change T1 to T and update TS & T3	20.08.2018	Xavier	Drawn	15.08.2012	Lucas
X.	±0.38	⑪	Update row pitch of PCB layout	20.08.2018	Xavier	Approved	03.12.2018	Hellwig
X.X	±0.25	⑩	Add the plating 15u"Au	06.08.2018	Winnie			
X.XX	±0.13	⑨	Update	26.06.2018	Xavier	ASSMANN WSW components		Drawing-No.
DIM	TOL	⑧	Update	31.05.2018	Segal			ASSMANN WSW-No. A-HDx xx A-KG/x
X.°	±3°							ASS 4897 CO rev13
X.X°	±1.0°							Replace
Angle	TOL	Id.	Modification	Date	Name			Sheet 2/5

Female

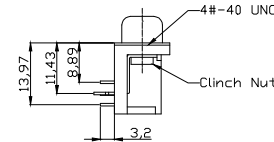
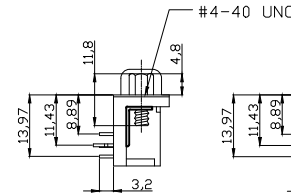
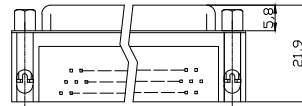
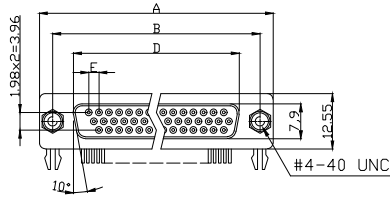
Product Specification

Material

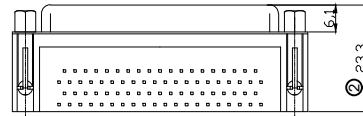
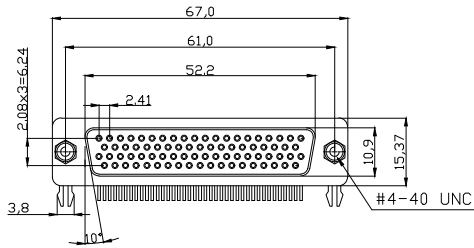
- ⑧ Insulator :Glass-Filled Thermoplastic PBT,UL94V-0 rated ,Black
- ⑧ Contact : Copper alloy, Plating: refer to table1
- Shell : Steel,100u" Tin Over 50u" min Copper
- Clinch Nut: Brass, 100u" min Nickel Plated.
- Boardlock :Brass, 100u" min Nickel Plated.
- Screwlock :Brass, 100u" min Nickel Plated.

Electrical

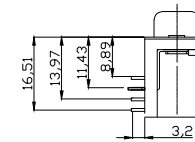
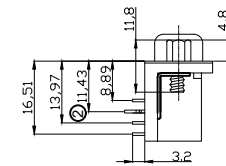
- Contact Resistance :20 milliohms Max at 1 AMP DC.
- Insulation Resistance :1000 magohms at 500 VDC
- Dielectric Withstanding Voltage :1000 VAC/rms 60Hz for 1 minute
- Current Rating :3 AMP
- Volatge Rating :250 VAC/rms 60Hz
- ⑧ Operating Temperature: -55°C ~ +105°C



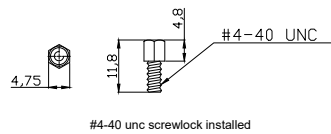
① Without Screwlock



78 Positions



① Without Screwlock



#4-40 unc screwlock installed

Dimensions

Positions	A	B	D	E	G	H
15	30.81	24.99	16.33	2.29	1.145	7.04
26	39.20	33.30	24.70	2.29	1.145	6.88
44	53.05	47.04	38.40	2.29	1.145	6.88
62	69.40	63.50	54.80	2.41	1.205	7.00

RoHS compliant
Unit: mm

Scale	Free	⑬	Modification	Date	Name
TOLERANCE		⑫	correct p/n T to T3 & T3 to T	03.12.2018	Hellwig
X.	±0.38	⑪	Change T1 to T and update TS & T3	20.08.2018	Xavier
X.X	±0.25	⑩	Update row pitch of PCB layout	20.08.2018	Xavier
X.XX	±0.13	⑨	Add the plating 15u"Au	06.08.2018	Winnie
DIM	TOL	⑧	Update	26.06.2018	Xavier
X.°	±3°	⑦	Update	31.05.2018	Segal
X.X°	±1.0°	⑥	Update		
Angle	TOL	Id.			

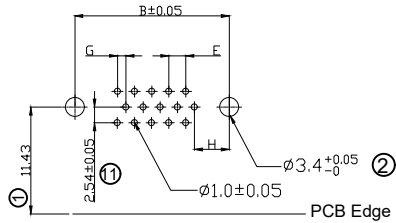


Customer-No.
Date
Name
Lucas
03.12.2018
Hellwig
ASSMANN WSW-No.
A-HDx xx A-KG/x

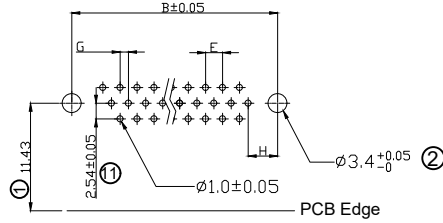
Drawing-No.
ASS 4897 CO rev13
Sheet 3/5

Female

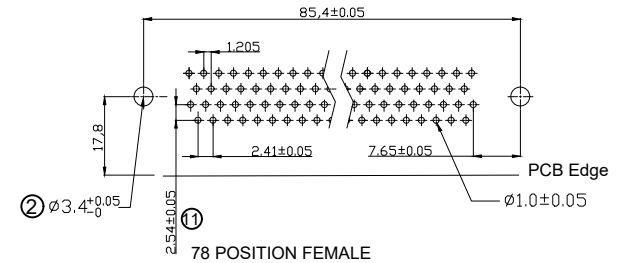
P.C.B LAYOUT PATTERN



15 POSITION FEMALE

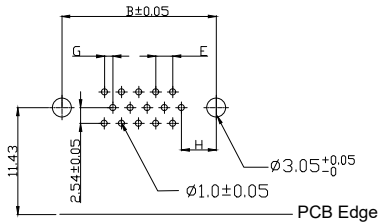


26,44,62 POSITION FEMALE

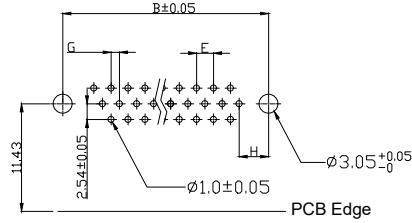


78 POSITION FEMALE

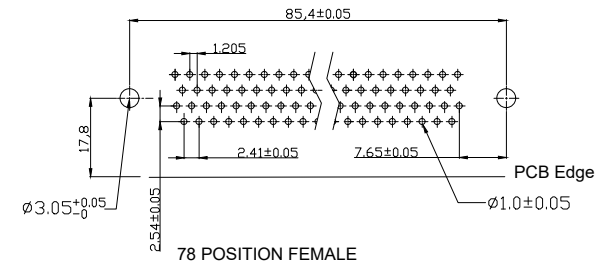
① P.C.B LAYOUT PATTERN for Without Screwlock



15 POSITION FEMALE



26,44,62 POSITION FEMALE



78 POSITION FEMALE

Dimensions						
Positions	A	B	D	E	G	H
15	30.81	24.99	16.33	2.29	1.145	7.04
26	39.20	33.30	24.70	2.29	1.145	6.88
44	53.05	47.04	38.40	2.29	1.145	6.88
62	69.40	63.50	54.80	2.41	1.205	7.00

RoHS compliant
Unit: mm

Scale	Free	⑬	correct p/n T to T3 & T3 to T	03.12.2018	Hellwig	Date	Name	Customer-No.	
TOLERANCE		⑫	Change T1 to T and update TS & T3	20.08.2018	Xavier	Drawn	15.08.2012	Lucas	
X.	±0.38	⑪	Update row pitch of PCB layout	20.08.2018	Xavier	Approved	03.12.2018	Hellwig	
X.X	±0.25	⑩	Add the plating 15u"Au	06.08.2018	Winnie				
X.XX	±0.13	⑨	Update	26.06.2018	Xavier				
DIM	TOL	⑧	Update	31.05.2018	Segal				
X.°	±3°								
X.X°	±1.0°	⑦	Update						
Angle	TOL	Id.	Modification	Date	Name			Drawing-No.	
								ASSMANN WSW-No.	ASS 4897 CO
								Replace	Sheet 4/5



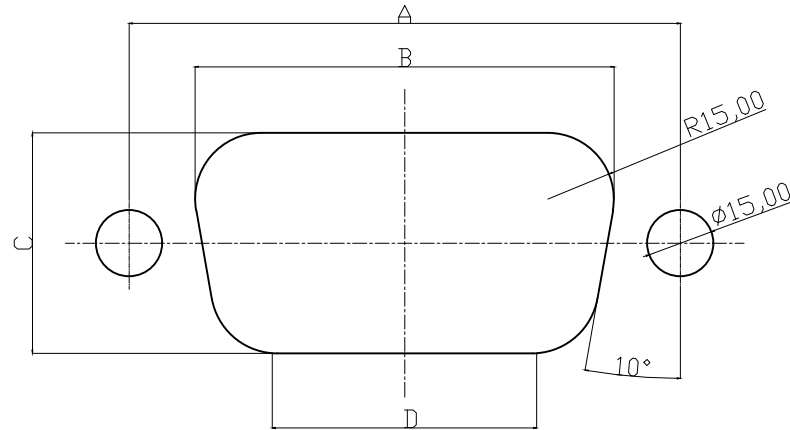
	1	2	3	4	5	6	7	
--	---	---	---	---	---	---	---	--

A								A
---	--	--	--	--	--	--	--	---

B								B
---	--	--	--	--	--	--	--	---

C								C
---	--	--	--	--	--	--	--	---

D								D
---	--	--	--	--	--	--	--	---



Recommended Panel Cut-Out

POSITION	A	B	C	D
15	24.99	20.47	10.67	12.01
26	33.30	28.80	10.67	20.35
44	47.04	42.52	10.67	34.06
62	63.50	59.08	10.67	50.62
78	61.00	56.34	14.10	46.90

E								E
---	--	--	--	--	--	--	--	---

F								F
---	--	--	--	--	--	--	--	---

RoHS compliant
Unit: mm

Scale	Free	⑬	Modification	Date	Name
TOLERANCE		⑫	correct p/n T to T3 & T3 to T	03.12.2018	Hellwig
X.	±0.15	⑪	Change T1 to T and update TS & T3	20.08.2018	Xavier
X.X	±0.10	⑩	Update row pitch of PCB layout	20.08.2018	Xavier
X.XX	±0.05	⑨	Add the plating 15u"Au	06.08.2018	Winnie
DIM	TOL	⑧	Update	26.06.2018	Xavier
X.°	±3°	⑦	Update	31.05.2018	Segal
X.X°	±1.0°	⑥	Update		
Angle	TOL	⑤	Update		



Customer-No.	
ASSMANN WSW-No. A-HDx xx A-KG/x	
Drawing-No. ASS 4897 CO	rev13
Replace	Sheet 5/5

G								G
---	--	--	--	--	--	--	--	---

H								H
---	--	--	--	--	--	--	--	---

	1	2	3	4	5	6	7	SV4086
--	---	---	---	---	---	---	---	--------