

## CTSPMA5012F Series

From .47 $\mu$ H to 10 $\mu$ H



### SPECIFICATIONS

Parts are available in  $\pm 20\%$  inductance tolerance only

Part Number	Inductance ( $\mu$ H)	L Test Condition	DCR Max. (m $\Omega$ )	Isat Max. (A)	Irms Max. (A)
CTSPMA5012F-R47M	0.47	100KHz, 1V	14.9	12.6	7.2
CTSPMA5012F-R68M	0.68	100KHz, 1V	18.0	9.7	6.8
CTSPMA5012F-1R0M	1.00	100KHz, 1V	23.0	8.8	5.7
CTSPMA5012F-1R5M	1.50	100KHz, 1V	29.0	6.2	5.5
CTSPMA5012F-2R2M	2.20	100KHz, 1V	51.5	6.0	3.7
CTSPMA5012F-3R3M	3.30	100KHz, 1V	81.5	5.0	2.8
CTSPMA5012F-4R7M	4.70	100KHz, 1V	100.0	4.3	2.7
CTSPMA5012F-6R8M	6.80	100KHz, 1V	175.0	3.0	1.9
CTSPMA5012F-100M	10	100KHz, 1V	200.0	2.1	1.8

### PHYSICAL DIMENSIONS

Size	A	B	C	D	E	F
			Max.	Max.		
mm	5.4 $\pm$ 0.2	5.1 $\pm$ 0.2	5.4	1.2	2.0	2.0
inches	0.21 $\pm$ 0.008	0.20 $\pm$ 0.008	0.21	0.047	0.079	0.079
Size	G	H	I	J	K	
mm	1.25	1.20 $\pm$ 0.1	3.0	1.30 $\pm$ 0.1	2.5	
inches	0.049	0.047 $\pm$ 0.004	0.118	0.051 $\pm$ 0.004	0.098	

### CHARACTERISTICS

**Description:** SMD (shielded) Power Inductors

**Applications:** Smart phones, Notebook PC's, Tablets, HDD's, Servers, VRM's, Compact power supply modules, etc.

**Saturation Rated Current (Isat):** The DC current when the when the inductance becomes 30% lower than its initial value. (Ta=25°C)

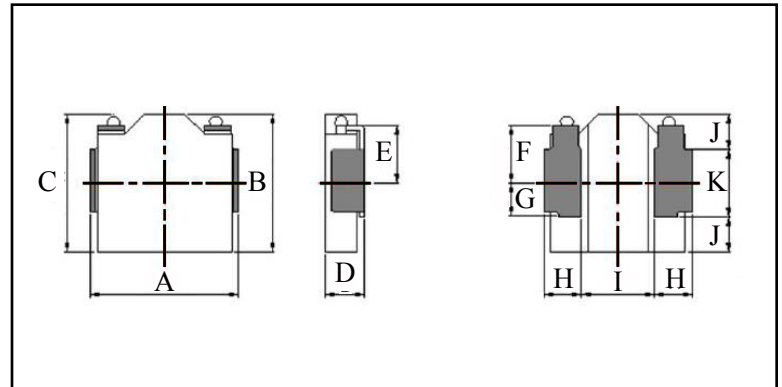
**Temperature Rise Current (Irms):** The actual current when temperature of coil becomes  $\Delta T 40^\circ\text{C}$ . (Ta=25°C)

**Operating Temperature Range:** -55°C to 155°C

**Markings:** Inductance Code

**Miscellaneous:** RoHS compliant

**Samples available. See website for ordering information.**



### PAD LAYOUT

