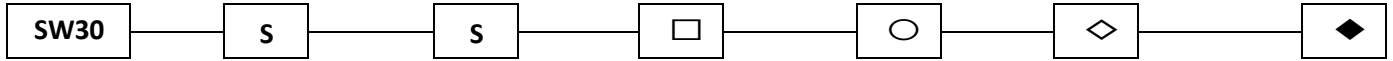


Product Configuration



| | | | | | | |
|------------------------|---|-----------------------------|--|--|--|---|
| Series Ø30mm | Bezel Material S: Stainless steel | Terminal S: Screw | □ Operation Type M: Momentary L: Latching | ○ LED Styling 0: None 1: - 2: Ring 3: Power | ◇ LED Colour 1: Red 2: Green 3: Yellow 4: Orange 5: Blue 6: White | ◆ LED Voltage 1: 6V 2: 12V 3: 24V 4: 36V 5: 110V 6: 240V |
|------------------------|---|-----------------------------|--|--|--|---|

Example Part Numbers

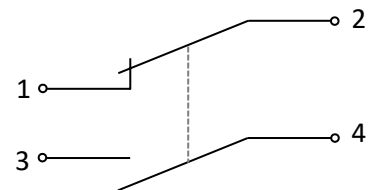
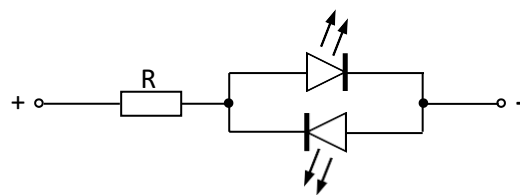
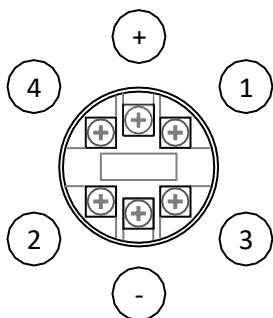
SW30SSM0 Momentary, No LED
 SW30SSL253 Latching, Ring Styling, Blue LED @ 24V



Specifications

| | | | |
|-----------------------------|--------------------|-----------------------|--------------|
| Voltage / Current Rating | 250V / 5A (AC) | Ingress Protection | IP 65 |
| Contact Resistance | ≤ 50mΩ | Impact Rating | IK 10 |
| Insulation Resistance | ≥ 1,000MΩ | Operating Force | 3 – 5 N |
| Dielectric Strength | 1,780V (AC) | Operating Travel | 3 mm |
| Mechanical Life | ≥ 1,000,000 cycles | Panel Thickness Range | 1 – 14 mm |
| Electrical Life (Full Load) | ≥ 50,000 cycles | Torque | 5 – 14 N |
| Contact Configuration | 1 NC, 1 NO | Contact Material | Silver alloy |
| Soldering | n/a | Operating Temp. Range | -40 to +80°C |

Contact Configuration / Circuit Diagram



The LED illumination is polarity insensitive

Outline Dimensions (mm) - Not to scale

