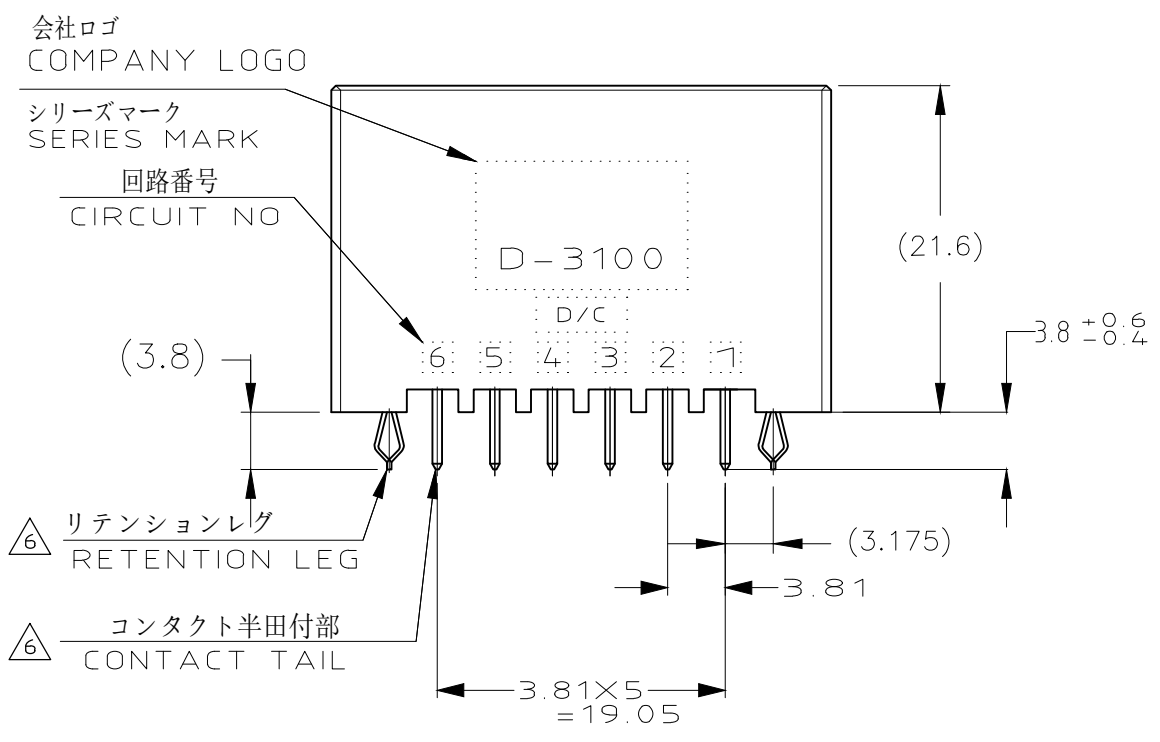
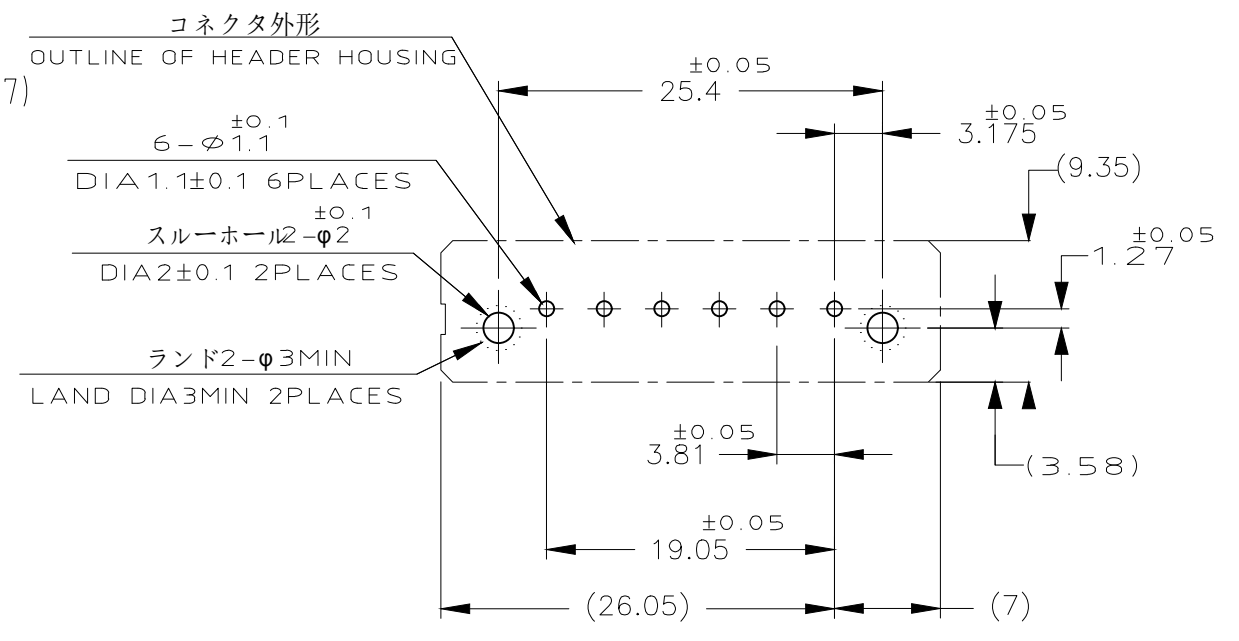
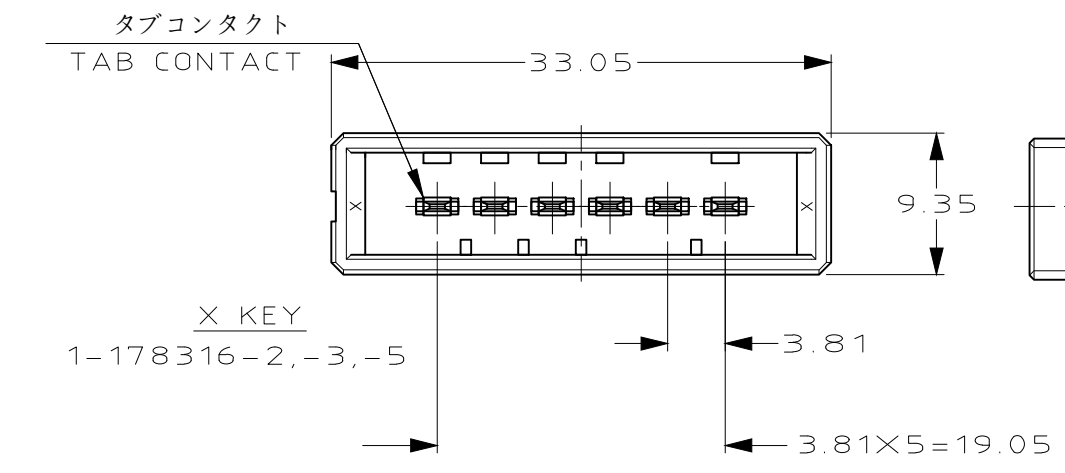


THIS DRAWING IS UNPUBLISHED. RELEASED FOR PUBLICATION
 © COPYRIGHT - - ALL RIGHTS RESERVED.

REVISIONS					
P	LTR	DESCRIPTION	DATE	DWN	APVD
	C2	REVISED PER ECR-18-010496	04JUN2018	K.T	E.I

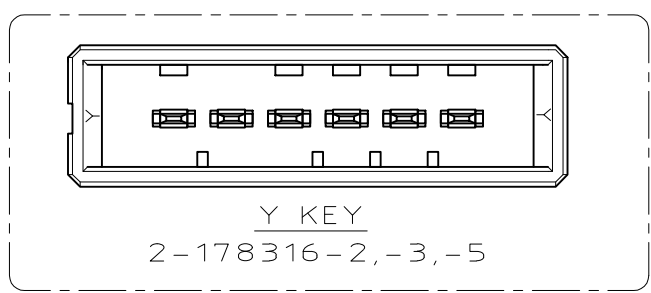


推奨基板取付け穴寸法
 PC 基板厚: 1.6±0.1
 (非累積公差)
 (コネクタ搭載面)

RECOMEND PC BOARD HOLE PATTERN
 PC BOARD THICKNESS: 1.6±0.1
 (NOT ACCUMULATE TOLERANCE)
 (CONNECTOR MOUNT SIDE)

1. MATERIAL: HOUSING: GLASS FILLED THERMO PLASTIC, POLYESTER
 CONTACT: COPPER ALLOY
 RETENTION LEG: COPPER ALLOY
2. FINISH (CONTACT AREA): 0.38μm MIN GOLD PLATING OVER Ni PLATING
3. FINISH (CONTACT AREA): 0.76μm MIN GOLD PLATING OVER Ni PLATING
4. FINISH (CONTACT AREA): 2.0 μm MIN TIN PLATED OVER NICKEL
5. FINISH (RETENTION LEG): TIN PLATED (CONTACT TAIL) OVER NICKEL
7. GENERAL TOLERANCE
- | | |
|------------|-------|
| ≦ 10 | ±0.3 |
| 10 < ≦ 30 | ±0.4 |
| 30 < ≦ 100 | ±0.45 |
| ANGLE | ±3° |

1. 材料 ハウジングガラス入り熱可塑性
 ポリエステル樹脂
 コンタクト銅合金
 リテンションレグ銅合金
2. めっき コンタクト全面Ni下地
 接触部 0.38μm MIN 金めっき
3. めっき コンタクト全面Ni下地
 接触部 0.76μm MIN 金めっき
4. めっき コンタクト全面Ni下地
 接触部 2.0 μm MIN スズめっき
5. めっき リテンションレグとコンタクト半田付部
 : ニッケル下地の上にスズめっき
7. 一般公差
- | | |
|------------|-------|
| 10以下 | ±0.3 |
| 10を超え30以下 | ±0.4 |
| 30を超え100以下 | ±0.45 |
| 角度 | ±3° |



6	4	1,2-178316-5
6	3	1,2-178316-3
6	2	1,2-178316-2
(FINISH)		製品番号 (PART NO.)

THIS DRAWING IS A CONTROLLED DOCUMENT.		DWN K.IKEDA 22DEC1994	TE Connectivity Ltd.		
DIMENSIONS: mm		CHK S.MANABE 10JAN1995			
TOLERANCES UNLESS OTHERWISE SPECIFIED.		APVD S.MANABE 10JAN1995	NAME 6POS SINGLE ROW VERTICAL HDR ASSY DYNAMIC 3100		
0 PLC ± - 1 PLC ± - 2 PLC ± - 3 PLC ± - 4 PLC ± - ANGLES ± -		PRODUCT SPEC 108-5349	SIZE A3		
MATERIAL SEE NOTE		APPLICATION SPEC 114-5148	CAGE CODE -	DRAWING NO C-178316	RESTRICTED TO -
FINISH SEE NOTE		WEIGHT	SCALE 2:1		
		CUSTOMER DRAWING	SHEET 1 OF 1		
			REV C2		