

6

5

4

3

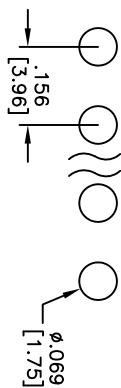
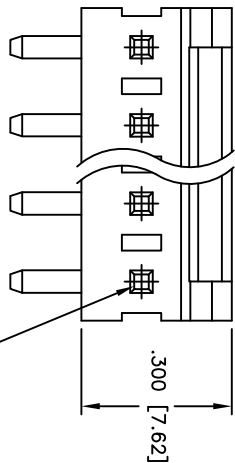
2

1

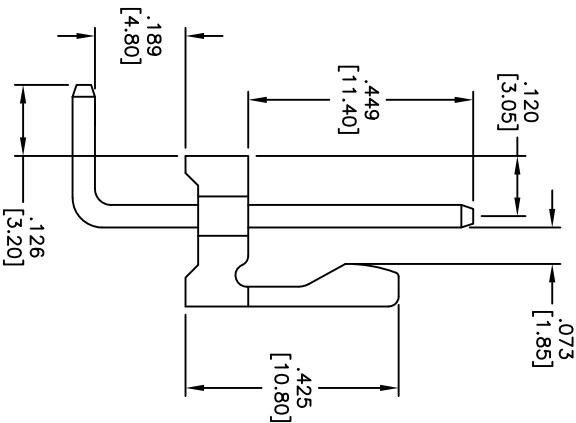
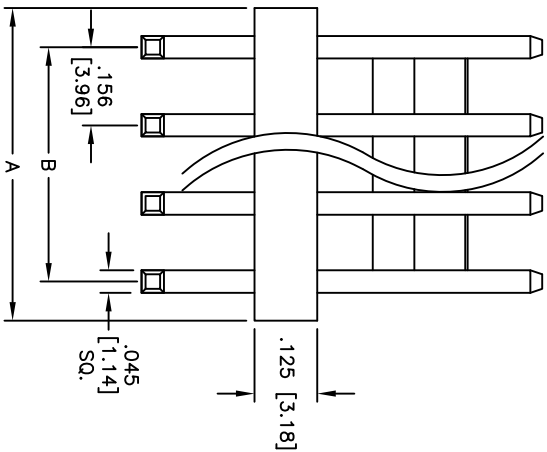
APPROVED: _____

DATE: _____ TITLE: _____

Rev	AWO #	Description	Date	Appr
-		RELEASED	6/18/10	
A		ECN	12/8/10	
B		REVISED DIM.	2/17/14	AY/MY



RECOMMENDED PCB LAYOUT



SPECIFICATIONS:

Material:

Insulator: PA66, glass reinforced, rated UL 94V-2

Insulator color: White

Contact: Brass, Tin or Ni plated

Electrical:

Current rating: 7 Amps max

Contact resistance: 20mohms max

Insulation resistance: 1,000 Mohms min

Dielectric withstanding voltage: 1,000 VAC for 1 minute

Temperature Rating:

Operating temperature: -40°C to +85°C

Environmental:

Lead free, RoHS compliant

Positions: 2 thru 20
 A = .156 [3.96] x No. of Positions
 B = .156 [3.96] x No. of Spaces

UNLESS OTHERWISE SPECIFIED
 ALL DIMENSIONS ARE INCHES [MM]
 TOLERANCES: EXCEPT AS NOTED
 INCHES HOLE SIZES

.X	± .10	ØX	± .10
.XX	± .020	ØXXX	± .015
.XXX	± .015	ØXXX	± .010

APPROVALS

DATE

DRAWN DY 6/18/10

CHECKED

APPROVED

ADAM TECH

909 Railway Avenue, Union, NJ 07083

Phone: 908-687-5000 Fax: 908-687-5710

TITLE: .156 [3.96] HEADER, RIGHT ANGLE

SIZE	PART NO.	LHD-XX-TRA	REV.
X			B
REF: S0009C	SCALE: NTS	SHEET 1 OF 1	

6

5

4

3

2

1