

Rectangular connector reference

# 1 mm contacts

## Stamped & formed contacts for EPIC® MC 20



Contact size		Stripping length mm	Reel of 500 gold contacts: left-hand feed	
mm <sup>2</sup>	AWG*		pin	socket
0.08-0.2	28-26	2.5 ± 0.5	44429013	44429009
0.2-0.52	26-20	2.5 ± 0.5	44429014	44429010

\* AWG conversion is approximate

### Contact tools



Crimp tool:  
11158400



Removal tool:  
11132500

## for thermocouple applications



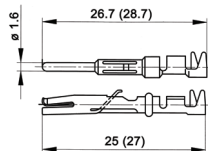
Contact size		Stripping length mm	Material	Polarity	Color	Type	Strip of 25 contacts	
mm <sup>2</sup>	AWG*						pin	socket
0.08-0.2	28-26	2.5 ± 0.5	chromel	(+)	white	type K	TC-CH-P	TC-CH-S
0.2-0.52	26-20	2.5 ± 0.5	alumel	(-)	green	type K	TC-AL-P	TC-AL-S
0.08-0.2	28-26	2.5 ± 0.5	iron	(+)	black	type J	TC-IR-P	TC-IR-S
0.2-0.52	26-20	2.5 ± 0.5	constantan	(-)	yellow	type J	TC-CO-P	TC-CO-S

# 1.6 mm contacts

## Stamped & formed contacts



contacts sold in  
bags of 100 or 1 reel



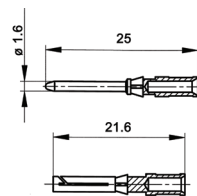
Contact size		Stripping length mm	Bag of 100 silver contacts		Bag of 100 gold contacts		Reel of 100 silver contacts: left-hand feed		Reel of 200 silver contacts: left-hand feed	
mm <sup>2</sup>	AWG		pin	socket	pin	socket	pin	socket	pin	socket
0.14-0.5	26-20	2.5-0.5	11241100	11231100	11243100	11233100	—	—	11240700	11230700
0.5-1.5	20-16	3.5-0.5	11221000	11236100	11221300	11238100	—	—	11220700	11235700
1.5-2.5	16-14	3.5-0.5	11223500	11228500	—	—	11223000	11228000	—	—

Contact size		Stripping length mm	Reel of 2000 silver contacts: right-hand feed		Reel of 2000 gold contacts: right-hand feed		Reel of 2000 silver contacts: left-hand feed		Reel of 2000 gold contacts: left-hand feed	
mm <sup>2</sup>	AWG		pin	socket	pin	socket	pin	socket	pin	socket
0.14-0.5	26-20	2.5-0.5	11240000	11230000	—	—	11240400	11230400	11240500	11230500
0.5-1.5	20-16	3.5-0.5	11220000	11235000	11220100	11235200	11226000	11226500	—	—
1.5-2.5	16-14	3.5-0.5	—	—	—	—	11222700	11227700	—	—

## Machined contacts



contacts sold in bags of 100



Contact size		Stripping length mm	# of marking tracks	Bag of 100 silver contacts		Bag of 100 gold contacts	
mm <sup>2</sup>	AWG			pin	socket	pin	socket
0.14-0.37	26-22	8	1	13162000	13163000	13162500	13163500
0.5	20	8	2	13162100	13163100	13162600	13163600
0.75-1.0	18	8	3	13162200	13163200	13162700	13163700
1.5	16	8	4	13162300	13163300	13162800	13163800
2.5	14	5.8	5	13162400	13163400	13162900	13163900

### Contact tools



Crimp tool:  
11147000



Removal tool:  
11161000



Crimp dies  
for machined contacts: 11147100  
for stamped contacts:  
0.14-0.5 mm<sup>2</sup>: 11147170  
0.5-1.5 mm<sup>2</sup>: 11147180  
1.5-2.5 mm<sup>2</sup>: 11147190



Crimp tool, die & locator  
for stamped contacts:  
0.14-0.5 mm<sup>2</sup>: 11147004  
0.5-1.5 mm<sup>2</sup>: 11147005  
1.5-2.5 mm<sup>2</sup>: 11147006



Locator  
for machined contacts: 11147200  
for stamped contacts: 11147300

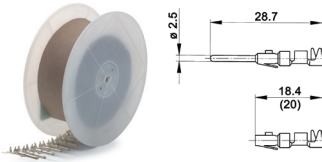
If not otherwise specified, all values relating to the product are nominal values. Photographs are not to scale and are not true representations of the products in question. For current information go to our website.

## 2.5 mm contacts

### Stamped & formed contacts for EPIC® MC 4+PE



contacts sold in bags of 100 or 1 reel



Contact size		Bag of 100 silver contacts		Reel of 100 silver contacts		Reel of 200 silver contacts	
mm <sup>2</sup>	AWG	pin	socket	pin	socket	pin	socket
0.5 - 1.5	20 - 16	11201000	11205000	—	—	11208000	11209000
1.5 - 2.5	16 - 14	11202000	11206000	11208500	11209500	—	—

#### Contact tools

 Crimp tool: 11147000	 Locator: 11147300	 Removal tool: 11160000	 Crimp tool for reel: 11153500
 Crimp dies: 0.5 - 1.5 mm <sup>2</sup> : 11147180 1.5 - 2.5 mm <sup>2</sup> : 11147190	 Crimp dies for reel: 0.5 - 1.5 mm <sup>2</sup> : 11153700 1.5 - 2.5 mm <sup>2</sup> : 11153800		

## Machined contacts



contacts sold in bags of 100



Contact size		Stripping length (mm)		# of marking tracks	Bag of 100 silver contacts		Bag of 100 gold contacts	
mm <sup>2</sup>	AWG	pin	socket		pin	socket	pin	socket
0.5	20	7.4	7.3	—	11190000	11195000	11192000	11197000
0.75 - 1.0	18	7.4	7.3	1	11190100	11195100	11192100	11197100
1.5	16	7.4	7.3	2	11190200	11195200	11192200	11197200
2.5	14	7.4	7.3	3	11190300	11195300	—	—
4.0	12	7.4	7.3	—	11190400	11195400	—	—
<b>Machined contacts for EPIC® MC 5</b>								
0.5	20	7.8	7.8	—	1121300C	1121800C	—	—
0.75 - 1.0	18	7.8	7.8	1	1121310C	1121810C	—	—
1.5	16	7.8	7.8	2	1121320C	1121820C	—	—
2.5	14	7.8	7.8	3	1121330C	1121830C	—	—
4.0	12	7.8	7.8	—	1121340C	1121840C	—	—

#### Contact tools

 Crimp tool: 11147000	 Crimp dies: 11147100	 Locator: 11147200	 Removal tool: 11171000 (required for EPIC® MC 5)
--	--	--	--

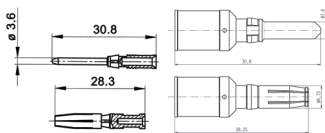
For removal of contacts, use a slotted screwdriver; no special tool is necessary. EPIC® MC 5 requires a removal tool.

## 3.6 mm contacts

### Machined contacts



contacts sold in bags of 100







1.5 - 10 mm<sup>2</sup>

16 mm<sup>2</sup>

Contact size		Stripping length mm	Bag of 100 silver contacts	
mm <sup>2</sup>	AWG		pin	socket
1.5	16	10	1121070C	1121570C
2.5	14	10	1121060C	1121560C
4.0	12	10	1121000C	1121500C
6.0	10	10	1121010C	1121510C
10.0	8	10	1121020C	1121520C
16	6	10	44424014	44424015

#### Contact tools

 Crimp tool: 11147000	 Crimp dies: 1.5 - 2.5 mm <sup>2</sup> : 11147110 4.0 - 10 mm <sup>2</sup> : 11147120 16 mm <sup>2</sup> : 11147111	 Locator: 11147210	 Removal tool: 11171100
--	---	---	--

If not otherwise specified, all values relating to the product are nominal values. Photographs are not to scale and are not true representations of the products in question. For current information go to our website.

Rectangular connector reference

### 4 mm contacts

#### Machined contacts for EPIC® MH 3 & MH 4



contacts sold in bags of 10

Contact size		Stripping length mm	Bag of 10 silver contacts	
mm <sup>2</sup>	AWG		pin	socket
1.5	16	10	44423250	44423255
2.5	14	10	44423251	44423256
4	12	10	44423252	44423257*
6	10	10	44423253	44423258
10	8	10	44423254	44423259

\* contact 44423257 requires crimp die 11174101

#### Contact tools



Crimp tool:  
11147000



Crimp dies:  
16 - 12 AWG: 11147100  
10 - 8 AWG: 11147101



Locator:  
11147201



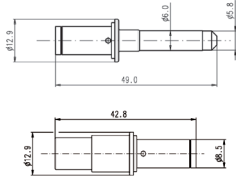
Removal tool:  
44423268

### 6 mm contacts

#### Machined contacts for EPIC® MC HHC2



contacts sold in bags of 20



Contact size		Bag of 20 silver-plated contacts	
mm <sup>2</sup>	AWG	pin	socket
16	6	44424019	44424022
25	4	44424020	44424023
35	1	44424021	44424024

#### Contact tools



Crimp dies:  
16 mm<sup>2</sup>: 44424025  
25 mm<sup>2</sup>: 44424026  
35 mm<sup>2</sup>: 44424027

Use hydraulic crimp tool:  
Klaue type FK 60/22-L

### 8 mm contacts

#### Machined contacts for EPIC® MH2



contacts sold in bags of 10

Contact size		Stripping length mm	Bag of 10 silver contacts	
mm <sup>2</sup>	AWG		pin	socket
10	8	18	44423242	44423246
16	6	18	44423243	44423247
25	4	18	44423244	44423248
35	2	18	44423245	44423249

#### Contact tools



Crimp dies:  
10 mm<sup>2</sup>: 44423270  
16 mm<sup>2</sup>: 44423271  
25 mm<sup>2</sup>: 44423272  
35 mm<sup>2</sup>: 44423273



Removal tool:  
44423269

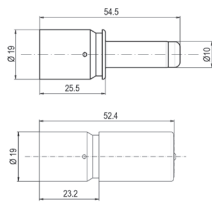
Use with hydraulic crimp tool

### 10 mm contacts

#### Machined contacts for EPIC® MC HHC1



part number = 1 contact



Contact size		Silver-plated contact		Pack size
mm <sup>2</sup>	AWG	pin	socket	
50	1/0	44424032	44424035	1
70	2/0	44424033	44424036	1
95	3/0	44424034	44424037	1

#### Contact tools



Crimp dies:  
50 mm<sup>2</sup>: 44424038  
70 mm<sup>2</sup>: 44424039  
95 mm<sup>2</sup>: 44424040

Use hydraulic crimp tool:  
Klaue type FK 60/22-L

### Coax contacts

#### Contacts for EPIC® MC 3 Coax



Cable type	Impedance	Pin	Socket
<b>Solder contacts</b>			
RG58 CU	50Ω	44429018	44429017
RG180 BU	75Ω	44429020	44429019
RG187 AU	75Ω	44429022	44429021
<b>Solder/crimp contacts</b>			
RG58	50Ω	11214200	11219200

#### Contact tools



Crimp tool:  
11147000



Crimp dies:  
11147130



Removal tool:  
11171100

If not otherwise specified, all values relating to the product are nominal values. Photographs are not to scale and are not true representations of the products in question. For current information go to our website.

## Contact tools

crimp tool



crimp die



locator



removal tool



Description	Crimp tool	Crimp dies	Locator	Removal tool
<b>1 mm contacts</b>				
1 mm stamped on reel	11158400	crimp dies included	—	11132500
<b>1.6 mm contacts</b>				
1.6 mm machined	11147000	11147100	11147200	11161000
1.6 mm stamped	11147000	0.14 - 0.5 mm <sup>2</sup> : 11147170 0.5 - 1.5 mm <sup>2</sup> : 11147180 1.5 - 2.5 mm <sup>2</sup> : 11147190	11147300	11161000
1.6 mm stamped on reel		crimp kit (includes tool, dies, and locator) 0.14 - 0.5 mm <sup>2</sup> : 11147004 0.5 - 1.5 mm <sup>2</sup> : 11147005 1.5 - 2.5 mm <sup>2</sup> : 11147006		11161000
<b>2.5 mm contacts</b>				
2.5 mm machined	11147000	11147100	11147200	HBE series: use slotted screwdriver MC series: 11171000
2.5 mm stamped	11147000	0.5 - 1.5 mm <sup>2</sup> : 11147180 1.5 - 2.5 mm <sup>2</sup> : 11147190	11147300	11160000
2.5 mm stamped on reel	11153500	0.5 - 1.5 mm <sup>2</sup> : 11153700 1.5 - 2.5 mm <sup>2</sup> : 11153800	—	11160000
<b>3.6 mm contacts</b>				
3.6 mm machined	11147000	1.5 - 2.5 mm <sup>2</sup> : 11147110 4 - 10 mm <sup>2</sup> : 11147120 16 mm <sup>2</sup> : 11147111	11147210	11171100
<b>4 mm contacts</b>				
4 mm machined	11147000	1.5 - 4 mm <sup>2</sup> : 11147100 6 - 10 mm <sup>2</sup> : 11147101	11147201	44423268
<b>6 mm contacts</b>				
6 mm machined	use hydraulic crimp tool	16 mm <sup>2</sup> : 44424025 25 mm <sup>2</sup> : 44424026 35 mm <sup>2</sup> : 44424027	—	—
<b>8 mm contacts</b>				
8 mm machined	use hydraulic crimp tool	10 mm <sup>2</sup> : 44423270 16 mm <sup>2</sup> : 44423271 25 mm <sup>2</sup> : 44423272 35 mm <sup>2</sup> : 44423273	—	44423269
<b>10 mm contacts</b>				
10 mm machined	use hydraulic crimp tool	50 mm <sup>2</sup> : 44424038 70 mm <sup>2</sup> : 44424039 95 mm <sup>2</sup> : 44424040	—	—
<b>Coax contacts</b>				
Coax	11147000	11147130	—	11171100

If not otherwise specified, all values relating to the product are nominal values.  
Photographs are not to scale and are not true representations of the products in question.  
For current information go to our website.