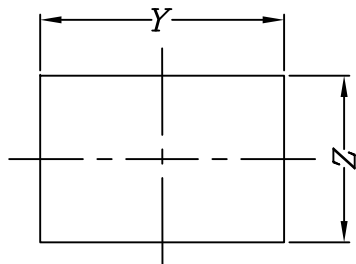


NOTES:

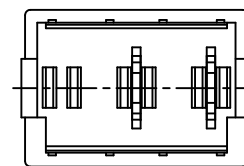
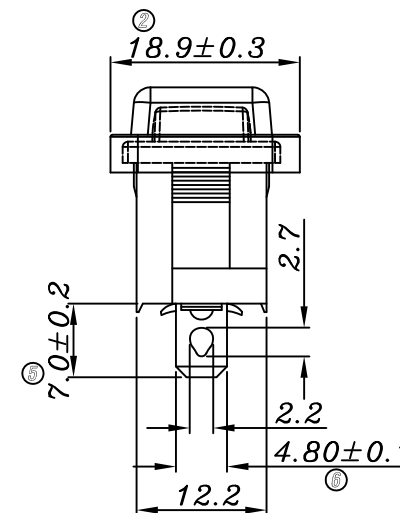
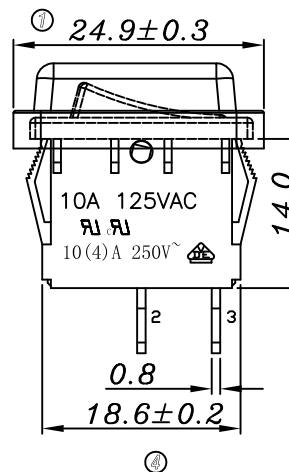
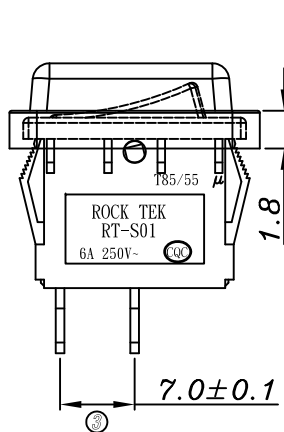
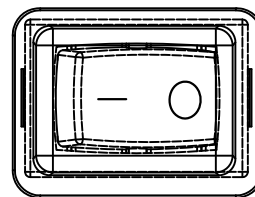
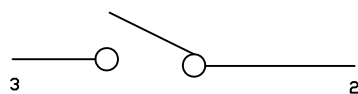
- 1.Circuit: ON/OFF
- 2.Operation force: 500 ± 200 gf
- 3.Electrical rating: 10(4)A 250V~ (VDE)
 10A 125V~ (UL CUL ; CQC)
 6A 250V~ (UL CUL ; CQC)
- 4.Contact resistance: < 50 m Ω
- 5.Insulation resistance: > 100 M Ω (500VDC
 between open contacts)
- 6.Dielectric strength: > 1500 VAC 0.5mA 1 minute
- 7.Color: cover is black, body is black

Panel cut - out:

X	Dim.Y	Dim.Z
0.75~1.25mm	19.20+0.1/-0	12.80+0.1/-0
1.25~2.0mm	19.30+0.1/-0	12.80+0.1/-0



Circuit of Switch



NO	DESCRIPTION	NO	DESCRIPTION	DIMENSIONAL TOLERANCES		APPROVED	CHECKED	DESIGN	DRAWN	ALL SIZE ARE IN		MM			
				RANGE	TOLERANCE					SCALE	FIT				
5	→	10	→	X	±0.4	LMC 2017.08.12 ROCK TEK ELECTRICAL(SHENZHEN) CO.,LTD.				MAT'L	***	DRAWING NO.	REV		
4	→	9	→	X.X	±0.3					MATERIAL NO.	RT-S01-113-LANBBC			WIF119173	A0
3	→	8	→	X.XX	±0.2										
2	→	7	→	ANGLES	±0.5°										
1	→	6	→												

