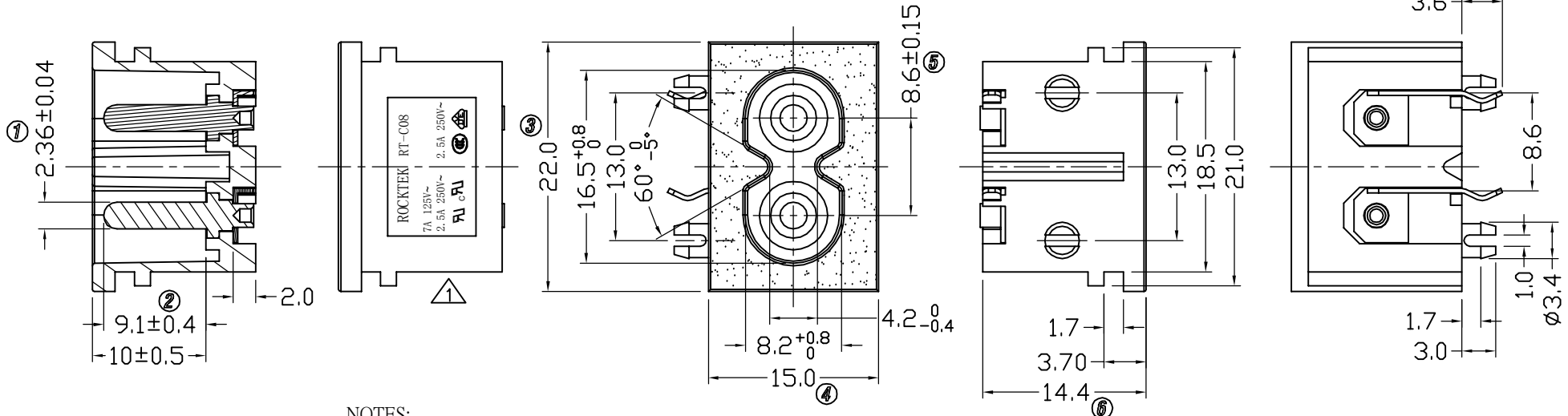
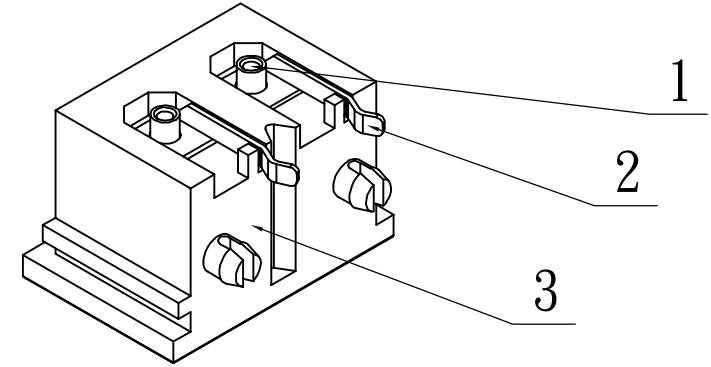
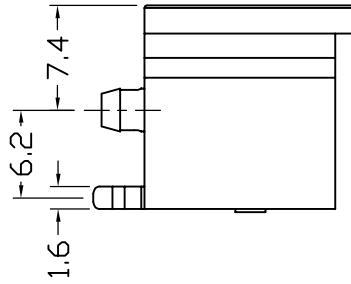
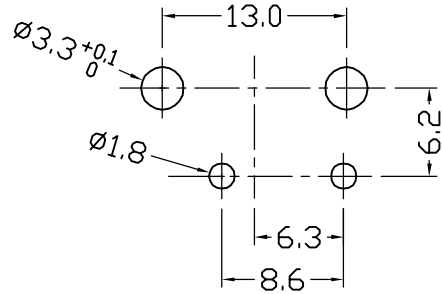


PCB. LAYOUT



NOTES:

1. Rating : 2.5A 250VAC (CCC ; VDE)  
2.5A 250VAC 7A 125VAC (UL CUL)
2. Contact resistance : 50mΩ Max
3. Insulation resistance : >100MΩ (Min) 500VDC
4. Dielectric strength : >2000VAC 0.5mA 1 minutes

品名	颜色
RT-C08-G2-BG	黑色
RT-C08-G2-WG	纯白色
RT-C08-G2-W1G	米白色

NO.	PART NAME	MATERIAL	Q'TY
3	BODY	PA66 UL94V-0 Black & White	1
2	1# terminal	C2680 1/2H Tin-plating 3~5 μm	2
1	1# PIN	C3602 Ni-plating 3~5 μm	2

A	DIMENSIONAL TOLERANCES		APPROVED	CHECKED	DESIGN	DRAWN	ALL SIZE ARE IN		DRAWING NO.	REV.
	RANGE	TOLERANCE					MM	FIT		
⑤	→									WIF117003 A2
④	→									
③	→	X	±0.3							
②	增加白色品名 23.01.11	X.X	±0.2							
①	修改UL安规刻字 21.01.30	X.XX	±0.1							
NO	DESCRIPTION	ANGLES	±1'	<b>ROCK TEK ELECTRONIC(SHENZHEN) CO.,LTD.</b>			RT-C08-G2-*G			

LMC  
2017.06.14

