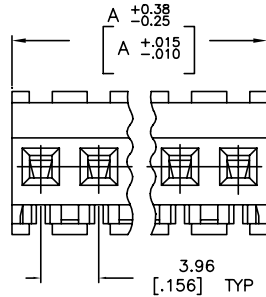
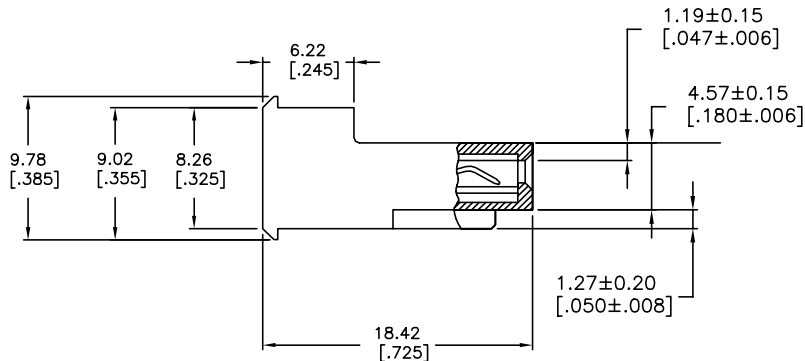
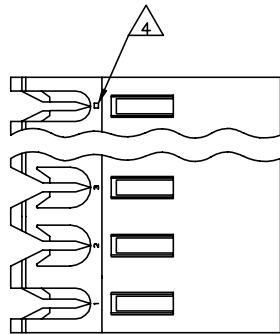


THIS DRAWING IS UNPUBLISHED. RELEASED FOR PUBLICATION
 © COPYRIGHT - By - ALL RIGHTS RESERVED.

| LOC | | DIST | | REVISIONS | | | | |
|-----|-----|-------------|---------------|-----------|----|-----|--|--|
| P | LTN | DESCRIPTION | | DATE | DN | APD | | |
| T | | REVISED PER | ECR-20-000824 | 29MAY2020 | PC | SW | | |



| DIM A | NO OF CIRCUITS | PART NO |
|---------------|----------------|-----------------------|
| 95.10 [3.744] | 24 | 5-640607-4 |
| 91.14 [3.588] | 23 | 5-640607-3 |
| 87.17 [3.432] | 22 | 5-640607-2 |
| 83.21 [3.276] | 21 | 5-640607-1 |
| 79.25 [3.120] | 20 | 5-640607-0 |
| 75.29 [2.964] | 19 | 4-640607-9 |
| 71.32 [2.808] | 18 | 4-640607-8 |
| 67.36 [2.652] | 17 | 4-640607-7 |
| 63.40 [2.496] | 16 | 4-640607-6 |
| 59.44 [2.340] | 15 | 4-640607-5 |
| 55.47 [2.184] | 14 | 4-640607-4 |
| 51.51 [2.028] | 13 | 4-640607-3 |
| 47.55 [1.872] | 12 | 4-640607-2 |
| 43.59 [1.716] | 11 | 4-640607-1 |
| 39.62 [1.560] | 10 | 4-640607-0 |
| 35.66 [1.404] | 9 | 3-640607-9 |
| 31.70 [1.248] | 8 | 3-640607-8 |
| 27.74 [1.092] | 7 | 3-640607-7 |
| 23.77 [0.936] | 6 | 3-640607-6 |
| 19.81 [0.780] | 5 | 3-640607-5 |
| 15.85 [0.624] | 4 | 3-640607-4 |
| 11.89 [0.468] | 3 | 3-640607-3 |
| 7.92 [0.312] | 2 | 3-640607-2 |
| 95.10 [3.744] | 24 | 5-640607-4 |
| 91.14 [3.588] | 23 | 5-640607-3 |
| 87.17 [3.432] | 22 | 5-640607-2 |
| 83.21 [3.276] | 21 | 5-640607-1 |
| 79.25 [3.120] | 20 | 5-640607-0 |
| 75.29 [2.964] | 19 | 4-640607-9 |
| 71.32 [2.808] | 18 | 4-640607-8 |
| 67.36 [2.652] | 17 | 4-640607-7 |
| 63.40 [2.496] | 16 | 4-640607-6 |
| 59.44 [2.340] | 15 | 4-640607-5 |
| 55.47 [2.184] | 14 | 4-640607-4 |
| 51.51 [2.028] | 13 | 4-640607-3 |
| 47.55 [1.872] | 12 | 4-640607-2 |
| 43.59 [1.716] | 11 | 4-640607-1 |
| 39.62 [1.560] | 10 | 4-640607-0 |
| 35.66 [1.404] | 9 | 3-640607-9 |
| 31.70 [1.248] | 8 | 3-640607-8 |
| 27.74 [1.092] | 7 | 3-640607-7 |
| 23.77 [0.936] | 6 | 3-640607-6 |
| 19.81 [0.780] | 5 | 3-640607-5 |
| 15.85 [0.624] | 4 | 3-640607-4 |
| 11.89 [0.468] | 3 | 3-640607-3 |
| 7.92 [0.312] | 2 | 3-640607-2 |

- 1 MATERIAL: CONNECTOR - NYLON UL94V-2 (WHITE)
CONTACTS - 0.30[.012] THICK COPPER ALLOY (BRIGHT TIN-LEAD 0.00203[.000080] MIN. THICK FOR CONTACTS 640607-2 THRU 2-640607-4) (MATTE WHISKER MITIGATED TIN 0.00203[.000080] MIN THICKNESS OVER NICKEL UNDERPLATE FOR 3-640607-2 THRU 5-640607-4).
- 2 CONTACTS ACCEPT 24 AWG WIRE WITH 2.41[.095] MAX INSULATION DIAMETER.
- 3 CONTACTS MUST ACCEPT 1.14±0.03[.045±.001] SQUARE POST AND REMAIN LOCKED IN POSITION.
- 4 IDENTIFICATION NUMBER FOR LAST CIRCUIT MAY NOT APPEAR ON ALL ASSEMBLIES.
- 5 DIMENSIONS IN BRACKETS ARE IN INCHES.
- 6 HOUSING FEATURES ARE: FEED-THRU WITHOUT LOCKING RAMP.
- 7 OBSOLETE PARTS: OBSOLETE CIS STREAMLINING PER D.RENAUD/D.SINISI
- 8 OBSOLETE PARTS

THIS DRAWING IS A CONTROLLED DOCUMENT.

DRW: B. LEWIS 12FEB91
 CHK: R. SWING 12FEB91
 APD: D. CLARK 19FEB91

TE Connectivity
 MTA-156 CONNECTOR ASSEMBLY, 24 AWG, STANDARD

108-1051
 APPLICATION SPEC 114-1020

MATERIAL: 1
 FINISH: 1

SIZE: A2
 CAGE CODE: 00779
 DRAWING NO: 640607

CUSTOMER DRAWING
 SCALE: 4:1
 SHEET: 1 OF 1
 REV: T