



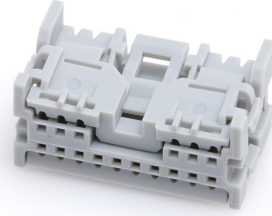
Part Number : [348240165](#)

Product Description : PROPOSED
REPLACEMENT: MINI50 GEN II UNSEALED
RECEPTACLES (206523 SERIES)
 Mini50
Unsealed Receptacle, Dual Row, Non-Bridged,
16 Circuits, EcoPaXX Resin, Polarization
Option B, Gray

Series Number : 34824

Status : Active

Product Category : Connector Housings



Documents & Resources

Drawings

[Drawing 348240165_sd.pdf](#)

[Packaging Design Drawing PK-31301-538-001.pdf](#)

3D Models and Design Files

[3D Model 348240165_stp.zip](#)

Specifications

[Application Specification AS-34791-020-CH-001.pdf](#)

[Application Specification AS-34791-020-001.pdf](#)

[Product Specification PS-34791-020-001.pdf](#)

[Test Summary 347910020-TS-000.pdf](#)

Product Environment Compliance

Compliance

GADSL/IMDS	Duty-To-Declare
China RoHS	
EU ELV	Compliant per 2000/53/EC
Low-Halogen Status	Low-Halogen per IEC 61249-2-21
REACH SVHC	Not Contained per D(2023)3788-DC (14 Jun 2023)
EU RoHS	Compliant per EU 2015/863

Multiple Part Product Compliance Statements

- Eu RoHS
- REACH SVHC

- Low-Halogen

Multiple Part Industry Compliance Documents

- IPC 1752A Class C
- IPC 1752A Class D
- Molex Product Compliance Declaration
- IEC-62474
- chemSHERPA (xml)

EU RoHS Certificate of Compliance

Part Details

General

Status	Active
Category	Connector Housings
Series	34824
Description	PROPOSED REPLACEMENT: MINI50 GEN II UNSEALED RECEPTACLES (206523 SERIES) Mini50 Unsealed Receptacle, Dual Row, Non-Bridged, 16 Circuits, EcoPaXX Resin, Polarization Option B, Gray
Application	Automotive, Power, Wire-to-Board
Product Family	Mini50 Connection Systems
Product Name	Mini50
UPC	191128224765

Physical

Circuits (maximum)	16
Color - Resin	Gray
Gender	Receptacle
Glow-Wire Capable	No
Keying to Mating Part	Yes
Lock to Mating Part	Yes
Material - Resin	Nylon
Net Weight	1.767/g
Number of Rows	2
Packaging Type	Bag
Panel Mount	No

Pitch - Mating Interface	2.00mm
Pitch - Termination Interface	2.00mm
Polarization	B
Polarized to Mating Part	Yes
Stackable	No
Temperature Range - Operating	-40° to +105°C

Mates With / Use With

Mates with Part(s)

Description	Part Number
Mini50 Unsealed Dual Row Vertical Headers	<u>34825</u>
Mini50 Unsealed Dual Row Right-Angle Headers	<u>34826</u>
Mini50 Unsealed Dual Row Right-Angle Headers	<u>34897</u>

Use with Part(s)

Description	Part Number
CTX50 Unsealed Receptacle Terminals	<u>560023</u>