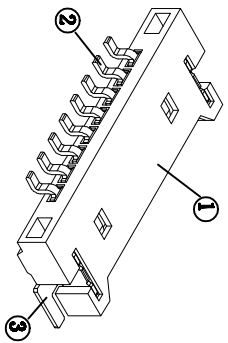
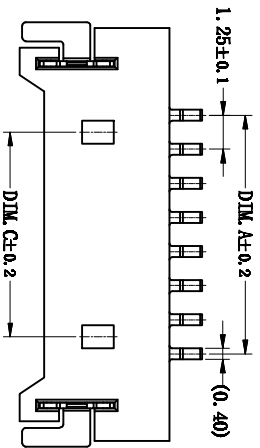
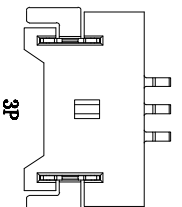
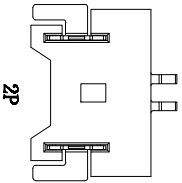
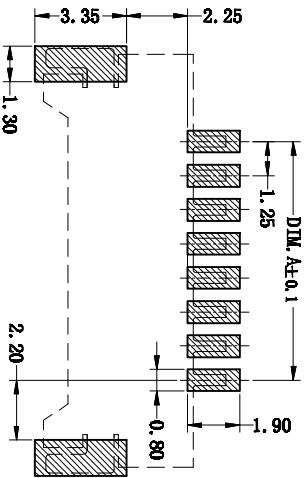
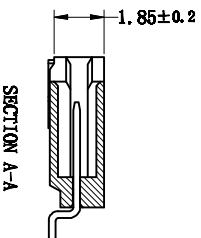
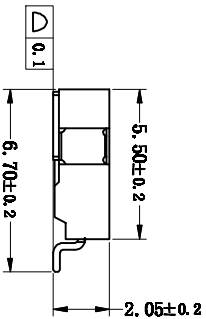
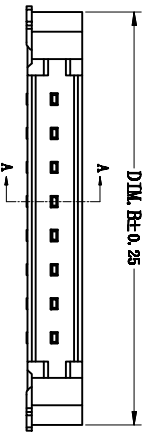


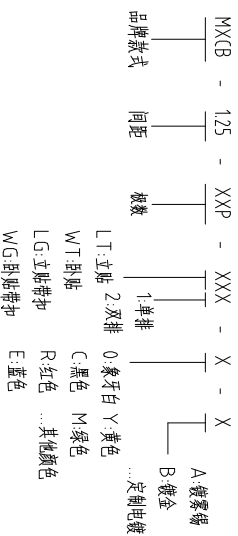
注：本板为禁止运输、复制、翻印文件，以及用其内容进行交流



Circuit	Dimensions (mm)		
	A	B	C
02	1.25	7.65	-
03	2.50	8.90	-
04	3.75	10.15	2.50
05	5.00	11.40	3.75
06	6.25	12.65	5.00
07	7.50	13.90	6.25
08	8.75	15.15	7.50
09	10.00	16.40	8.75
10	11.25	17.65	10.00
11	12.50	18.90	11.25
12	13.75	20.15	12.50
...
20	23.75	30.15	22.50



How to order



- 技术要求:
- 1、塑件材料: LCP (UL-94V-0)
 - 2、接触件: 磷铜镀金
 - 3、绝缘电阻: $\leq 20m\Omega$
 - 4、绝缘电阻: $\geq 100M\Omega$
 - 5、额定电压: 125V AC DC
 - 6、额定电流: 1.0A AC DC
 - 7、耐压: 能承受500V AC/Min ute
 - 8、工作温度: $-25^{\circ}\sim+85^{\circ}$
 - 9、可靠性试验: 浸锡面积 $\geq 95\%$ 温度 280°C , 时间 2.5 ± 0.5 秒
 - 10、铅和锡等六大有害物质含量符合环保要求

SUGGESTED PCB LAYOUT (COMPONENT SIDE)

GENERAL TOLERANCES

0.X	± 0.25	X. $^{\circ}$	$\pm 3^{\circ}$
0.XX	± 0.12		
0.XXX	± 0.05	X.X $^{\circ}$	$\pm 0.5^{\circ}$

序号	名称	材料	数量	备注
1	端子 Contact	LCP(UL94V-0)	1	
2	端子 Contact	磷铜镀金	1	
3	端子 Contact	磷铜镀金	1	

ITEM	NAME OF PART	NO. OF PART	Q'TY	MATERIAL	NOTE
DWG	CHK	DATE	23.08.10		
APP	DATE				
	NAME			MXCB-125-XXP-WT1	

MAXXU 慈溪市迈旭电子有限公司

DWGNO.

A