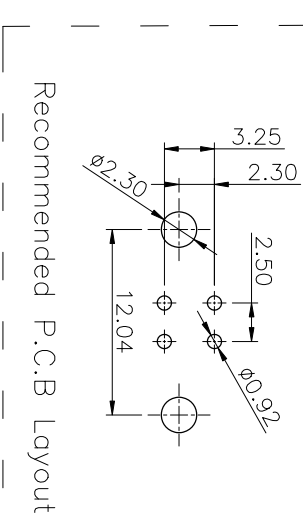
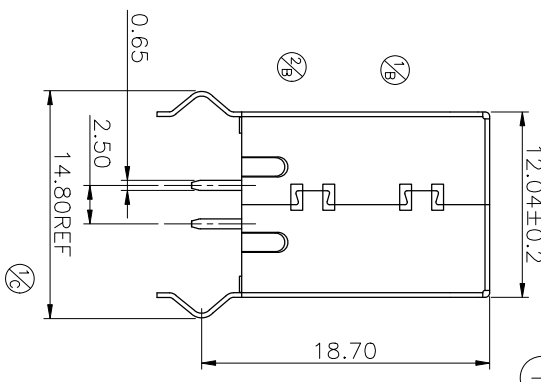
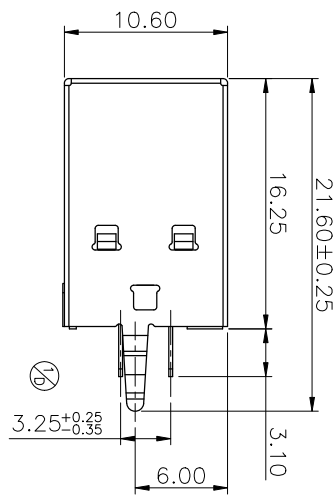
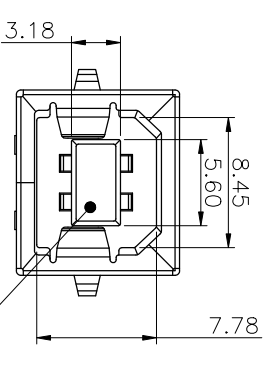
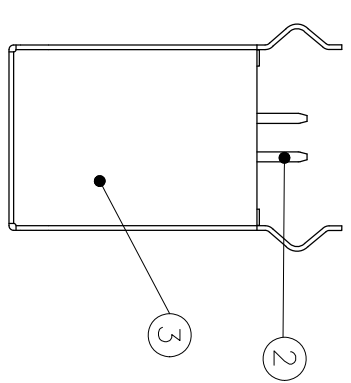


RoHS

MAPX	MODIFICATION	DRW	DATE



Recommended P.C.B Layout

Specifications:

1. Current Rating: 1.0A at 30V AC.
2. Withstanding Voltage: 500V AC for one minute.
3. Insulation Resistance: 100MΩ Min.
4. Contact Resistance: 30mΩ Max.
5. Mating Force: 3.57kgf Max.
6. Umating Force: 1.02kgf Min.

3	外壳	SPCC	—	NICKEL/GOLD PLATED
2	端子	C5191	—	GOLD/TIN PLATED
1	胶芯	PBT	WHITE/BLACK	UL 94V-0
NO.	DESCRIPTION	MATERIAL	COLOR	REMARK

深圳市精拓金电子有限公司
Shenzhen Jing Tuo Jin Electronics Co., Ltd.

公差一览表		制图料号	
TOLERANCE UNLESS OTHERWISE SPECIFIED	UNIT	DRAWING	PRODUCT PART NO.
X. ±0.35	MM	L-S-S	921-111A1010710200
.X. ±0.30	MM	审核	产品名称
.XX. ±0.25	MM	核准	BF 180度铁壳弯脚白胶
.XXX. ±0.05	MM	日期	制法
		2021-09-10	角法
			版本
			AP