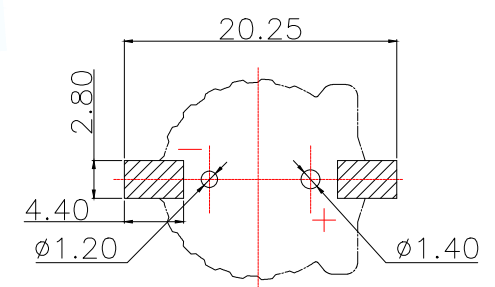
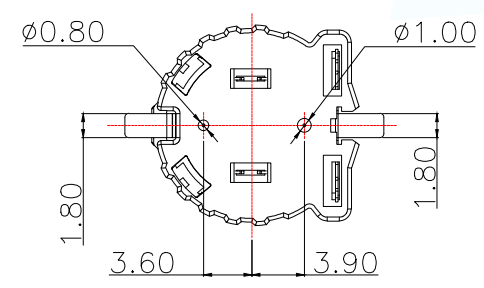
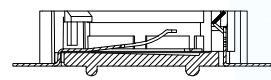
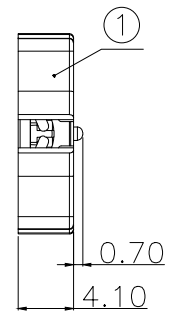
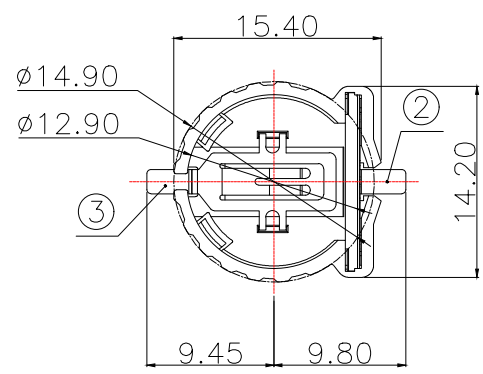




12	13	14	15
MAPX	MODIFICATION	DATE	APPROVE

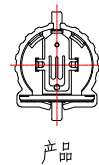


PCB Layout Diagram
Top View

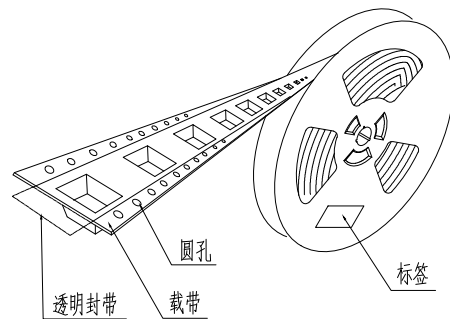
- 1.MATERIAL:
 a.HOUSING:PPS UL94V-0
 b.CONTACT:PHOSPHOR BRONZE (SURFACE PLATING:Au1u")
- 2.ELECTRIC:
 a.CONTACT RESISTANCE: 30 MILLIOHMS MAX
 b.INSULATION RESISTANCE: 100 MEGA OHMS MIN
 c.DIELECTNIC VOLTAGE: 500V AC ONE SEC LEVEL
 d.OPERATING TEMPERATURE: -25°C~+85°C

3	TERMINAL(-)	1	PHOSPHOR BRONZE, T=0.20mm	Gold Plating and Ni Under-Plating
2	TERMINAL(+)	1	PHOSPHOR BRONZE, T=0.20mm	Gold Plating and Ni Under-Plating
1	HOUSING	1	PPS	BROWN
NO.	PART NAME	Q'TY	MATERIAL	PLATING & COLOR

MANUFACTURE DWG		东莞市讯普电子科技有限公司 DongGuan XunPu Electronics Co.,Ltd		
UNLESS OTHERWISE SPECIFIED TOLERANCES			TITLE: PPS SMT	
DECIMALS: X.X±0.30			PAR	BS-1202-SA-3B
ANGLES: X.*±5'			DWN	
X.XX±0.25			CHKD	
X.XXX±0.15		X.X'±1'	APVD	
CUSTOMER COPY		SCALE N:A	UNIT:MM	
		SIZE:A4	SHEET:1F1	
			REV:A	

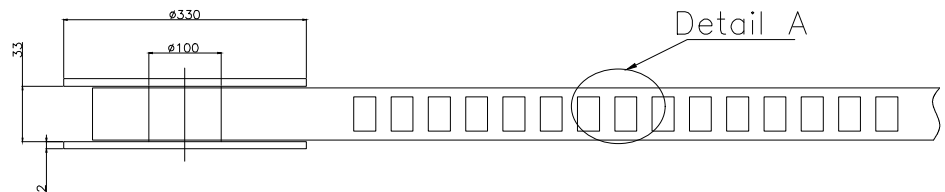


产品

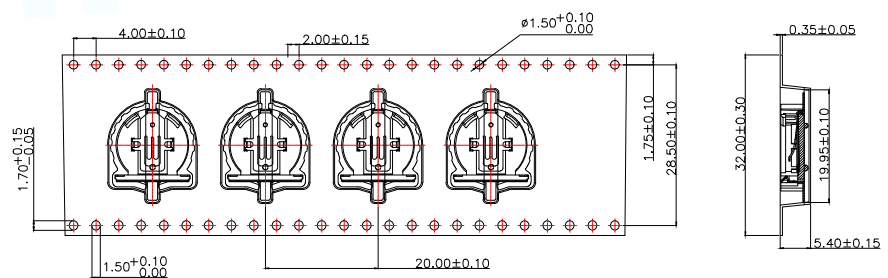
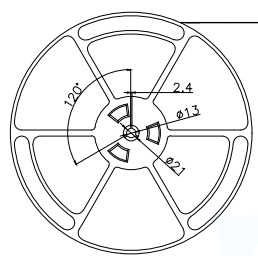
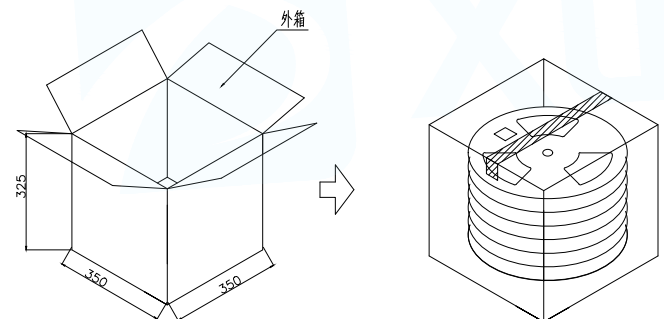
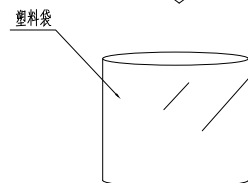
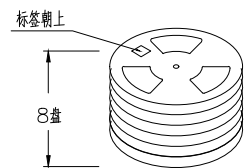
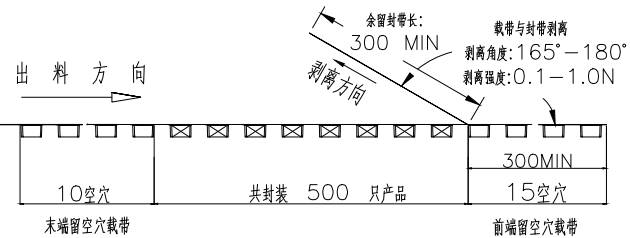


透明封带 载带

圆孔 标签



Detail A



技术要求:

1. 圆孔十个孔距离累计允许公差为±0.2mm
2. 带长250mm内容许弯曲度1mm
3. 材料厚度以在载带边缘测量为准
4. 所有尺寸定义依循EIA-481-C系准则定义之
5. 材料: 黑色PS T=0.35mm
6. 所有卷轮为灰蓝挖空旋转塑胶卷轮
7. 整模成型长度: 10.5 M,
8. 非指明公差范围为: ±0.1mm; 超过250mm不计算累计误差
9. 型腔外形凡未标明处倒角R为0.2-0.3; 拔模斜度未标注的为3°以下

包装信息:

- 1、每卷盘装产品 500 只, 卷盘外侧贴相关标签;
- 2、每 8 卷盘放在一个塑料袋中;
- 3、每外箱装8盘, 产品总数: 400 只;
- 4、外箱上下用胶纸封成"工"字;
- 5、净重: 2.4 KG, 毛重: 6.9 KG.

MANUFACTURE DWG		东莞市讯普电子科技有限公司 DongGuan XunPu Electronics Co., Ltd		
UNLESS OTHERWISE SPECIFIED TOLERANCES		TITLE: PPS SMT 载带		
DECIMALS:			PAR	BS-1202-SA-3B
ANGLES:			DWN	
X.X±0.30	X.*±5°		CHKD	
X.XX±0.25	X.X*±1°		APVD	
X.XXX±0.15		CUSTOMER COPY	SCALE N:A	UNIT:MM
			SIZE:A4	SHEET:1F1
				REV:A