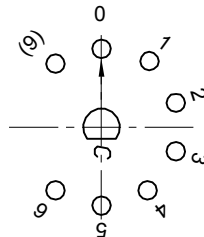
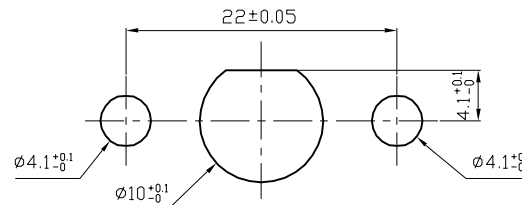


1. 额定值 RATING: 8A 125/250VAC (UL, C-UL)
12A-8(3)A 250V~ μ T125/55 (ENEC-17, CQC, CB)
2. 功能 FUNCTIONAL: 见电路图 SEE CIRCUIT DESCRIPTION
带回弹功能 PLUS A MOMENTARY POSITION
3. 接触电阻 CONTACT RESISTANCE: <50mΩ
4. 绝缘电阻 INSULATION RESISTANCE: >100MΩ
(500VDC BETWEEN OPEN CONTACTS)
5. 耐电压 DIELECTRIC STRENGTH: >1500VAC 0.5mA 1 MINUTE
6. 所有部件均使用环保材料
ALL MATERIALS USE IN CONFORMIY WITH THE RoHS DIRECTIVE
7. "○"表示关键尺寸 DENOTES CRITICAL DIMENSIONS

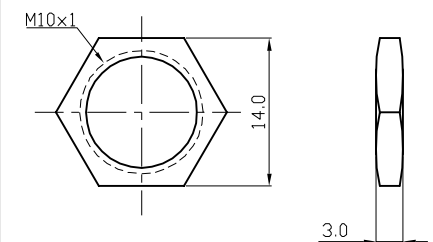


CIRCUIT DIAGRAM



PANEL CUTOUT

螺母配件



NO	DESCRIPTION	NO	DESCRIPTION	DIMENSIONAL TOLERANCES		APPROVED	CHECKED	DESIGN	DRAWN	ALL SIZE ARE IN		DRAWING NO. REV.	
				RANGE	TOLERANCE					MM	NO	DRAWING NO.	REV.
5	→	10	→	X	±0.30				LMC	SCALE		MFR01-A1M06L16S-B	*****
4	→	9	→	X.X	±0.20				2020.11.16	MATERIAL NO.			
3	→	8	→	X.XX	±0.10					MATERIAL NO.			
2	→	7	→	ANGLES	±1'	LECION ELECTRONIC & HARDWARE CO., LTD.				*****		AO	
1	→	6	→										