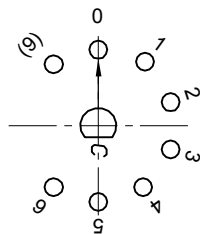
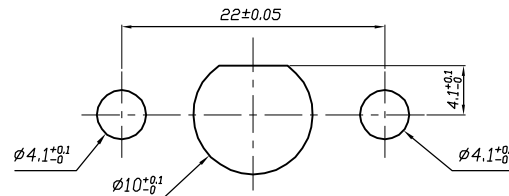


1. 额定值 RATING: 8A 125/250VAC(UL, C-UL)  
12A-8(3)A 250V~ μ T125/55 (ENEC-17, CQC, CB)
2. 功能 FUNCTIONAL: 见电路图 SEE CIRCUIT DESCRIPTION  
带回弹功能 PLUS A MOMENTARY POSITION
3. 接触电阻 CONTACT RESISTANCE: <50mΩ
4. 绝缘电阻 INSULATION RESISTANCE: >100MΩ  
(500VDC BETWEEN OPEN CONTACTS)
5. 耐电压 DIELECTRIC STRENGTH: >1500VAC 0.5mA 1 MINUTE
6. 所有部件均使用环保材料  
ALL MATERIALS USE IN CONFORMIY WITH THE RoHS DIRECTIVE
7. "○"表示关键尺寸 DENOTES CRITICAL DIMENSIONS

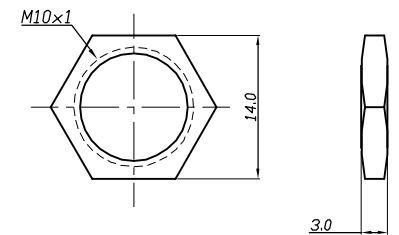


CIRCUIT DIAGRAM



PANEL CUTOUT

### 螺母配件



5	→	10	→	DIMENSIONAL TOLERANCES		APPROVED	CHECKED	DESIGN	DRAWN	ALL SIZE ARE IN	MM	
4	→	9	→	RANGE	TOLERANCE				LMC	SCALE	NO	
3	→	8	→	X	±0.30				2020.11.16	MAT'L	***	
2	→	7	→	X.X	±0.20					MATERIAL NO.	DRAWING NO.	
1	→	6	→	X.XX	±0.10	LEGION ELECTRONIC & HARDWARE CO., LTD.				MFR01-A1M06L15SN-B	WIF122010	A0
NO	DESCRIPTION	NO	DESCRIPTION	ANGLES	±1'							