

1. 旋转开关型号 ROTARY SWITCH MODEL MFR01-A 1M05L3S-R;

2. 额定值 RATING: 8A 125/250VAC (UL, C-UL)

12A-8(3)A 250V~ μT125/55 (ENEC-17, CQC, CB)

UL APPROVAL FILE NO.: E153399

ENEC CERTIFICATE NO.: NO3691

CQC CERTIFICATE NO.: 10002049682

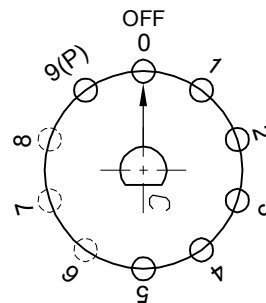
CB CERTIFICATE NO.: NO56963/A1

3. 功能 FUNCTIONAL: 单极7个档位 SINGLE POLE 7 POSITIONS

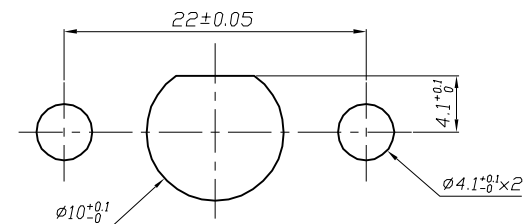
带回弹功能 PLUS A MOMENTARY POSITION

4. 所有部件均使用环保材料

ALL MATERIALS USE IN CONFORMIY WITH THE RoHS DIRECTIVE



CIRCUIT DIAGRAM



PANEL CUTOUT

修正 REVISION	說明 DESCRIPTION	修订者 REVISED BY	SPECIFICATION				公差 TOLERANCES		TOLERANCES UNLESS OTHERWISE SPEC. ±0.3/0.05, ANG. ±2		
			製圖 DRAWN BY	設計 DESIGNED BY	校對 CHECKED BY	核准 APPROVED BY	單位 UNIT	mm	機種名稱 MODEL NAME	ROTARY SW	機種編號 MODEL NO.
△			劉玉	唐彪	唐彪	唐彪	比例 SCALE	2/1	六鈞電子五金有限公司 LEGION ELECTRONIC & HARDWARE CO., LTD.		
△			29-APR-2016	29-APR-2016	29-APR-2016	29-APR-2016	日期 DATE	2016-4-29			