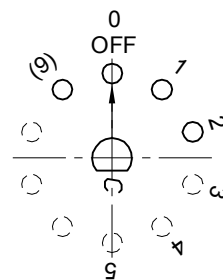
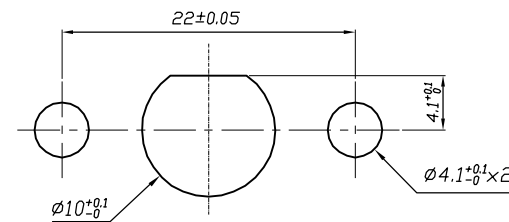


- 1. 旋转开关型号 ROTARY SWITCH MODEL MFR01-A1M02L1S-R;
- 2. 额定值 RATING: 8A 125/250VAC(UL, C-UL)
12A-8(3)A 250V~ μT125/55(ENEC-17, CQC, CB)
UL APPROVAL FILE NO.: E153399
ENEC CERTIFICATE NO.: NO3691
CQC CERTIFICATE NO. 10002049682
CB CERTIFICATE NO.: NO56963/A1
- 3. 功能 FUNCTIONAL: 单极4个档位 SINGLE POLE 4 POSITIONS
- 4. 所有部件均使用环保材料
ALL MATERIALS USE IN CONFORMIY WITH THE RoHS DIRECTIVE



CIRCUIT DIAGRAM



PANEL CUTOUT

修正 REVISION	說明 DESCRIPTION	修订者 REVISED BY	SPECIFICATION				公差 TOLERANCES		TOLERANCES UNLESS OTHERWISE SPEC. ±0.3/0.05, ANG. ±2			
△			製圖 DRAWN BY	設計 DESIGNED BY	校對 CHECKED BY	核准 APPROVED BY	單位 UNIT	mm	機種名稱 MODEL NAME	ROTARY SW	機種編號 MODEL NO.	MFR01-A1M02L1S-R
△			王凡	刘美昌	刘美昌	刘美昌	比例 SCALE	2/1	六鈞電子五金有限公司 LEGION ELECTRONIC & HARDWARE CO., LTD.			
△			27-DEC-2016	27-DEC-2016	27-DEC-2016	27-DEC-2016	日期 DATE	2016.12.27				