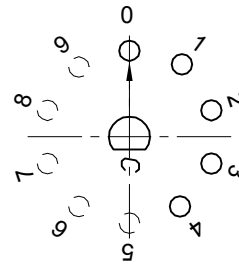
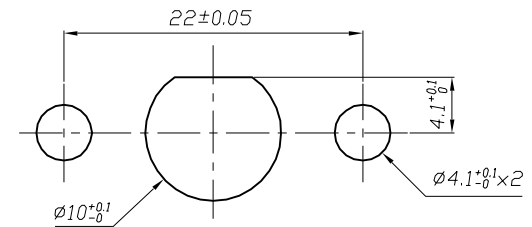


1. 旋转开关型号 ROTARY SWITCH MODEL MFR01-A 1F04L1S-R;
2. 额定值 RATING: 8A 125/250VAC (UL, C-UL)  
 12A-8(3)A 250V~ μT 125/55 (ENEC-17, CQC, CB)  
 UL APPROVAL FILE NO.: E153399  
 ENEC CERTIFICATE NO.: NO3691  
 CQC CERTIFICATE NO.: 10002049682  
 CB CERTIFICATE NO.: NO56963/A1
3. 功能 FUNCTIONAL: 单极5个档位 SINGLE POLE 5 POSITIONS
4. 所有部件均使用环保材料  
 ALL MATERIALS USE IN CONFORMIY WITH THE RoHS DIRECTIVE



CIRCUIT DIAGRAM



PANEL CUTOUT

修正 REVISION	說明 DESCRIPTION	修订者 REVISED BY	SPECIFICATION				公差 TOLERANCES		TOLERANCES UNLESS OTHERWISE SPEC. ±0.3/0.05, ANG. ±2		
			製圖 DRAWN BY	設計 DESIGNED BY	校對 CHECKED BY	核准 APPROVED BY	單位 UNIT	mm	機種名稱 MODEL NAME	ROTARY SW	機種編號 MODEL NO.
△			劉玉	唐彪	唐彪	唐彪	比例 SCALE	2/1	六鈞電子五金有限公司 LEGION ELECTRONIC & HARDWARE CO., LTD.		
△			17-FEB-2016	17-FEB-2016	17-FEB-2016	17-FEB-2016	日期 DATE	2016.2.17			