



Cable entry with membrane for unassembled cables, Mounting type: Rasten, Length: 147 mm, Width: 58 mm, IP66, Colour: Grey

RAL: Ähnlich 7035

Kaufmännische Daten

Artikelnummer	<u>28650.6</u>
Artikelbezeichnung	KES-R 13/24 GR
GTIN (EAN)	4044211220204
Packaging unit	10
Quantity unit	PC
Weight per piece (not including packaging)	105.9 g
Weight per piece (including packaging)	112.9 g
Unit of weight	G
Customs number	39259020
Country of origin	DE
Prio-Article	28650.6
Product description	Cable Entry

Technische Daten

Dimensions

Length	149.6 mm
Length of wall cutout	112 mm
Width	58 mm
Width of wall cutout	36 mm
Installation height	14.5 mm

Materials

Material	Polyamide 6.6
Glass-fibre reinforced	✓
Flammability class UL 94	V-0
Working temperature, min.	-40 °C
Working temperature, max.	90 °C
Sealing material	TPE
Halogen-free	✓
Silicone-free	✓

Further technical data

Mounting type	Snap-on
Degree of protection for snap-in mounting	IP54
Sheet thickness min.	1.5 mm
Sheet thickness max.	2 mm
NEMA Type	1
Number of wires	13
Number of cables for cable diameters 3.2 - 6.3 mm	10
Number of cables for cable diameters 16.0 - 20.5 mm	3

Zulassungen

cUL Recognized

cUL approval	C22.2 No. 14-18
--------------	-----------------

cUL File Number	E489821
-----------------	---------

cUL Recognized	1
----------------	---

UL Recognized

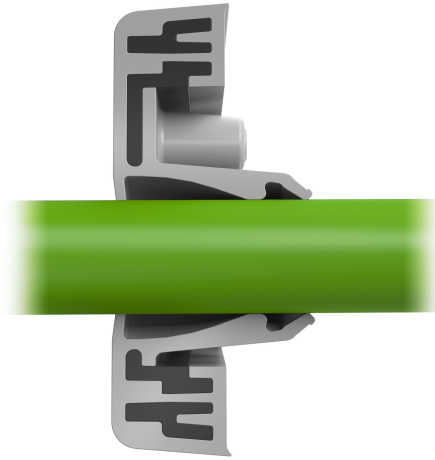
UL approval	UL 508A
-------------	---------

UL File Number	E489821
----------------	---------

UL Recognized	1
---------------	---

UL Type Rating	1
----------------	---

Medien



Zubehör

EMC brackets



Shield-connection rail enabling mounting of shield connection clips directly on cable entry system KDS and KES, Mounting type: Screw, Length: 35,3 mm, Width: 140 mm, Height: 16 mm, Profile: 10x3 mm

Artikelnummer	Artikelbezeichnung	GTIN (EAN)	VPE
<u>28626.0</u>	KDS-EMV-SAB 10/24	4044211219659	1 ST

Sheet-metal puncher



Sheet metal puncher for rectangular openings, Dimensions opening: 112 x 36 mm, Maximum wall thickness: 2.0 mm for stainless steel sheet, Material: steel

Artikelnummer	Artikelbezeichnung	GTIN (EAN)	VPE
<u>28752.0</u>	BL-VA KES	4044211221935	1 ST



Sheet metal puncher for rectangular openings, Dimensions opening: 112 x 36 mm, Maximum wall thickness: 2.0 mm for S 235 sheet, Material: steel

Artikelnummer	Artikelbezeichnung	GTIN (EAN)	VPE
<u>28744.0</u>	BL KES	4044211221942	1 ST