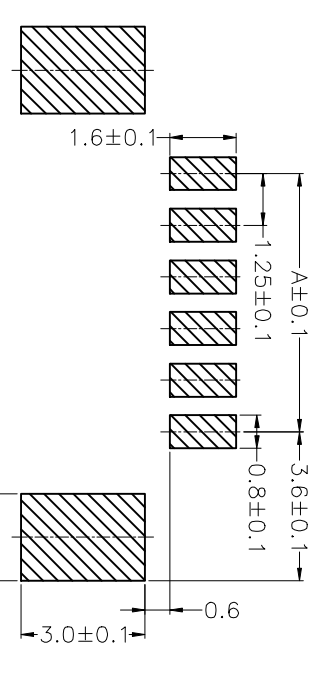
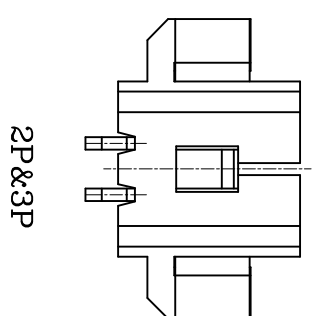
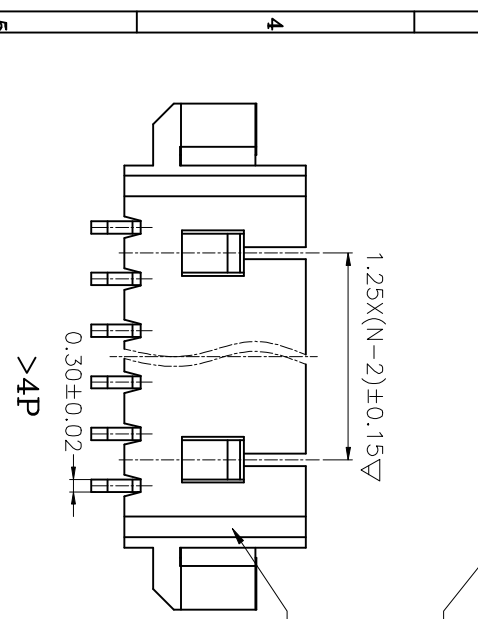
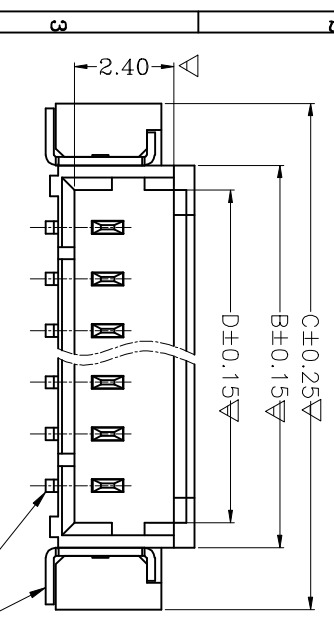
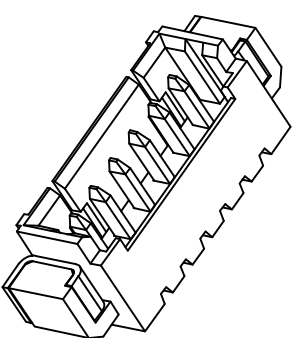
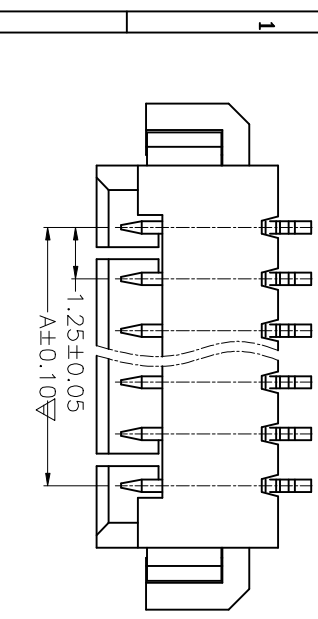


REV(版本)	DESCRIPTION(描述)	NAME(名称)	DATE(日期)



PCB LAYOUT

- 技术规格:
1. 塑件表面应光滑、无毛边、无明显收缩、缺格、裂纹等现象。
 2. 温度范围: -25° C~85° C, Working temp:-25° C~85° C.
 3. 额定电压: 100V, AC/DC. Voltage rating:100V AC/DC(max)
 4. 接触电阻: ≤40mΩ. Contact resistance:40mΩ max.
 5. 绝缘电阻: ≥100MΩ. Insulation resistance:100MΩ min
 6. 额定电流: 1A, AC/DC. Current rating:1A AC/DC
 7. 耐电压: AC 500V/1分钟. Withstanding Voltage:500V AC/minute
 8. 引脚保持力: 5N min. pin Retention Force:5N min
 9. 主体材料: LCP U94-V0, 本色. Housing material:LCP U94-V0, 本色
 10. 端子材: 黄铜2680, 镀镍50μ" min, 镀本镍100μ" min. Terminal mater:Brass C2680, plating Ni 50μ" min, plating Tin 100μ" min
 11. 垫片材料: 黄铜2680, 镀镍50μ" min, 镀本镍100μ" min. Solder tab material:Brass C2680, plating Ni 50μ" min, plating Tin 100μ" min
 12. 符号"▽"为重点管控. MAJOR DIMENSION: ▽

CKT	DimA	DimB	DimC	DimD
2	1.25	4.45	7.45	3.05
3	2.50	5.70	8.70	4.30
4	3.75	6.95	9.95	5.55
5	5.00	8.20	11.20	6.80
6	6.25	9.45	12.45	8.05
7	7.50	10.70	13.70	9.30
8	8.75	11.95	14.95	10.55
9	10.00	13.20	16.20	11.8
10	11.25	14.45	17.45	13.05
11	12.50	15.70	18.70	14.3
12	13.75	16.95	19.95	15.55
13	15.00	18.20	21.20	16.80
14	16.25	19.45	22.45	18.05
15	17.50	20.70	23.70	19.3
16	18.75	21.95	24.95	20.55

深圳市连欣科技有限公司

一般公差 (TOLERANCES)
 X ±.50 XX ±.10
 Y ±.30 XXX ±.05
 ANGLES 11°

品名 (TITLE)	料号 (P/N: NO)	比例 (SCALE)	单位 (UNITS)	页码 (SHEET)	尺寸 (SIZE)
XT10	XDW-0125WT-**P	1:1	mm	1 OF 1	A4
制图 (DWG)	审核 (APPV)	比例 (SCALE)	单位 (UNITS)	页码 (SHEET)	尺寸 (SIZE)
XT10	Alex	1:1	mm	1 OF 1	A4