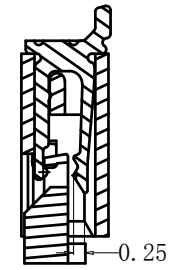
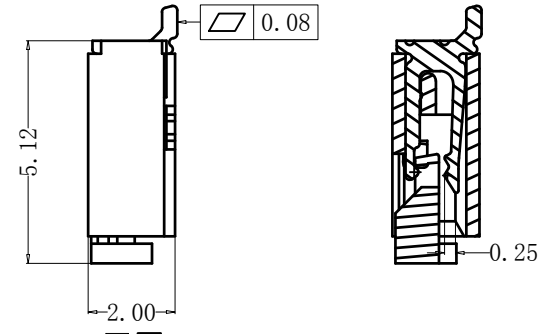
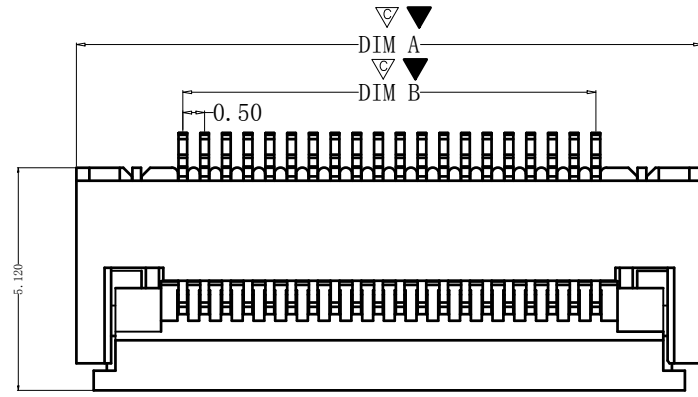


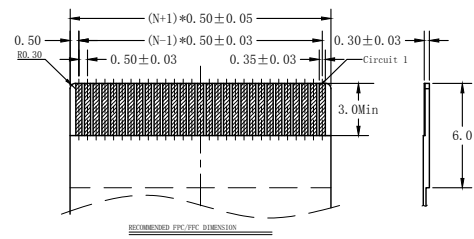
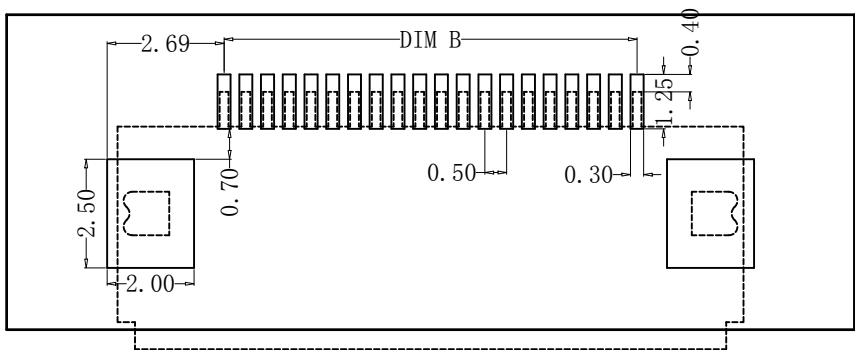
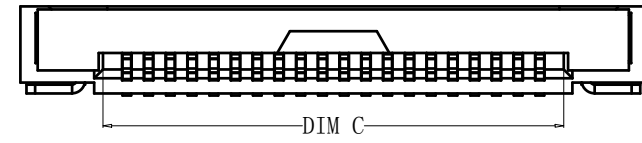
| REV. | DESCRIPTION | APPD | DATE |
|------|-------------|------|------|
| | | | |



NOTES:
 1.MATERIAL:
 HOUSING: HIGH TEMPERATURE THERMOPLASTIC UL94V_0,COLOR:BLACK.
 CONTACT: COPPER ALLOYS.
 2.PLATING:
 UNDERPLATE: NICKEL.
 CONTACT AREA: TIN OVER NICKEL.
 3.MULTIMEDIA CARD COMPATIBLE

| PIN NO. | DIM. A | DIM. B | DIM. C |
|---------|--------|--------|--------|
| 28 | 18.40 | 13.50 | 14.57 |
| 29 | 18.90 | 14.00 | 15.07 |
| 30 | 19.40 | 14.50 | 15.57 |
| 31 | 19.90 | 15.00 | 16.07 |
| 32 | 20.40 | 15.50 | 16.57 |
| 33 | 20.90 | 16.00 | 17.07 |
| 34 | 21.40 | 16.50 | 17.57 |
| 35 | 21.90 | 17.00 | 18.07 |
| 36 | 22.40 | 17.50 | 18.57 |
| 37 | 22.90 | 18.00 | 19.07 |
| 38 | 23.40 | 18.50 | 19.57 |
| 39 | 23.90 | 19.00 | 20.07 |
| 40 | 24.40 | 19.50 | 20.57 |
| 41 | 24.90 | 20.00 | 21.07 |
| 42 | 25.40 | 20.50 | 21.57 |
| 43 | 25.90 | 21.00 | 22.07 |
| 44 | 26.40 | 21.50 | 22.57 |
| 45 | 26.90 | 22.00 | 23.07 |
| 46 | 27.40 | 22.50 | 23.57 |
| 47 | 27.90 | 23.00 | 24.07 |
| 48 | 28.40 | 23.50 | 24.57 |
| 49 | 28.90 | 24.00 | 25.07 |
| 50 | 29.40 | 24.50 | 25.57 |
| 51 | 29.90 | 25.00 | 26.07 |
| 52 | 30.40 | 25.50 | 26.57 |
| 53 | 30.90 | 26.00 | 27.07 |
| 54 | 31.40 | 26.50 | 27.57 |
| 55 | 31.90 | 27.00 | 28.07 |
| 56 | 32.40 | 27.50 | 28.57 |
| 57 | 32.90 | 28.00 | 29.07 |
| 58 | 33.40 | 28.50 | 29.57 |
| 59 | 33.90 | 29.00 | 30.07 |
| 60 | 34.40 | 29.50 | 30.57 |

| PIN NO. | DIM. A | DIM. B | DIM. C |
|---------|--------|--------|--------|
| 04 | 6.40 | 1.50 | 2.57 |
| 05 | 6.90 | 2.00 | 3.07 |
| 06 | 7.40 | 2.50 | 3.57 |
| 07 | 7.90 | 3.00 | 4.07 |
| 08 | 8.40 | 3.50 | 4.57 |
| 09 | 8.90 | 4.00 | 5.07 |
| 10 | 9.40 | 4.50 | 5.57 |
| 11 | 9.90 | 5.00 | 6.07 |
| 12 | 10.40 | 5.50 | 6.57 |
| 13 | 10.90 | 6.00 | 7.07 |
| 14 | 11.40 | 6.50 | 7.57 |
| 15 | 11.90 | 7.00 | 8.07 |
| 16 | 12.40 | 7.50 | 8.57 |
| 17 | 12.90 | 8.00 | 9.07 |
| 18 | 13.40 | 8.50 | 9.57 |
| 19 | 13.90 | 9.00 | 10.07 |
| 20 | 14.40 | 9.50 | 10.57 |
| 21 | 14.90 | 10.00 | 11.07 |
| 22 | 15.40 | 10.50 | 11.57 |
| 23 | 15.90 | 11.00 | 12.07 |
| 24 | 16.40 | 11.50 | 12.57 |
| 25 | 16.90 | 12.00 | 13.07 |
| 26 | 17.40 | 12.50 | 13.57 |
| 27 | 17.90 | 13.00 | 14.07 |



| | | | | |
|---|----------|---|--|-------------------------------------|
| PART NO: | | MATERIAL: | | |
| LOT NO: | | FINISH: | | |
| UNIT: MM | SIZE: A4 | COLOR: | | |
| TOLERANCES: X.X=±0.35 X.XX=±0.25 X.XXX=±0.15 | | GENERAL ANGLE: X.X=±3.0° X.XX=±2.0° | | TITLE: 0.5间距 22Pin 翻盖 卧贴 下接 H2.0 |
| DR: Zhou qi | | DWG NO: BX-FPC05-2H22PX | | REV: C/O |
| CHK: | | SCALE: 1:1 | | SHEET: 1 OF 1 |
| APP: | | SHEET: 1 OF 1 | | |