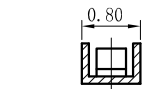
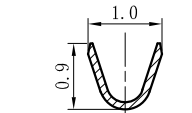
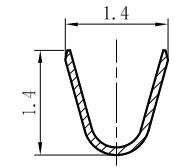
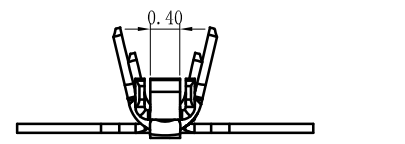
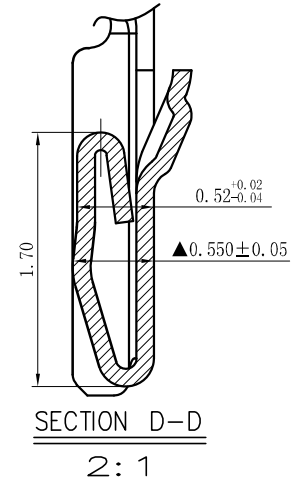
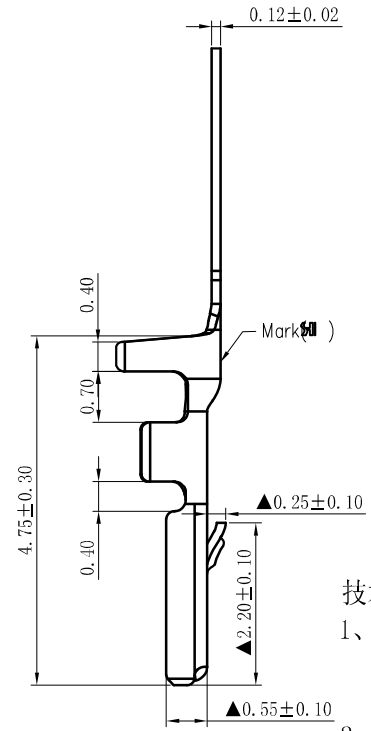
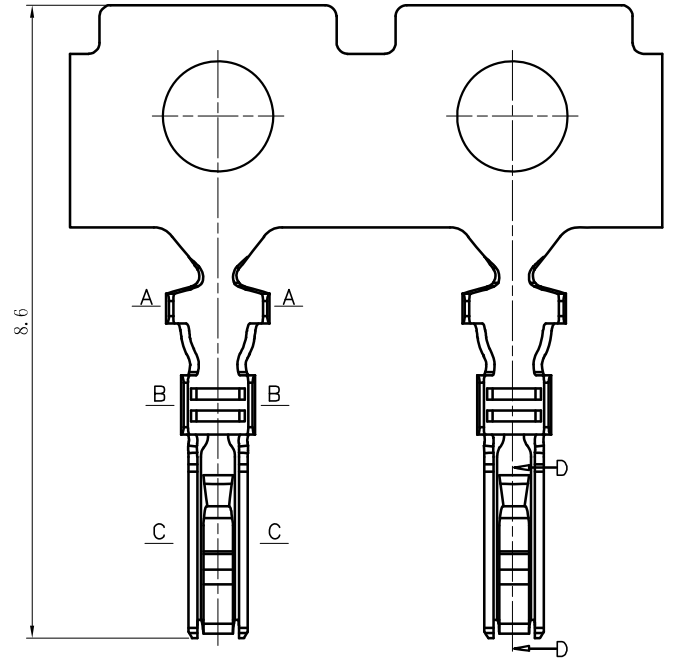


标记 MARK	更改内容 MODIFICATION	日期 DATE	修改 DRAW	核准 APPROVE



SECTION A-A

SECTION B-B

SECTION C-C

技术要求 Specification:

- 1、材质：磷青铜，表面镀锡，
Material: Phos. Bronze Tin-Plated
镀层：Sn≥2.50 μm, Ni≥0.50 μm
- 2、零件外观不得有有害毛刺、尖角、锐边和机械损伤；表面镀层应均匀、光亮、无雾斑、剥层等缺陷；
Parts may not have the appearance of harmful burrs, sharp corners, sharp edges and mechanical damage, surface coating should be uniform, bright, no fog spots, delamination and other defects.
- 3、适用线号：AWG#32-#28；
Wirerange: AWG#32-#28;

TOLERANCE UNLESS OTHERWISE SPECIFIED		* : Inspection Item		Bossie (博锡)			
.X±0.20	X.° ±1°	NO.	: Cp/Cpk and SPC Control Item	名称	GH1.25端子		
.XX±0.15	.X° ±	材料	磷青铜	编号	BX-GH1.25-DZ	单位	mm
.XXX±0.10	.XX° ±	MATERIAL	(Qsn6.5-0.1)	料厚	0.12 mm	版本	A1
制图		料宽		比例	1:1	角法	
DRAWIN		THICK		SCALE		PROJ.	
审核	Zhou qi	日期		规格书			
CHECKED		DATE					
批准							
APPROVE							