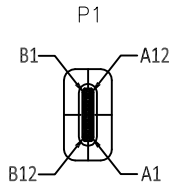


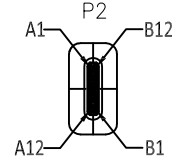
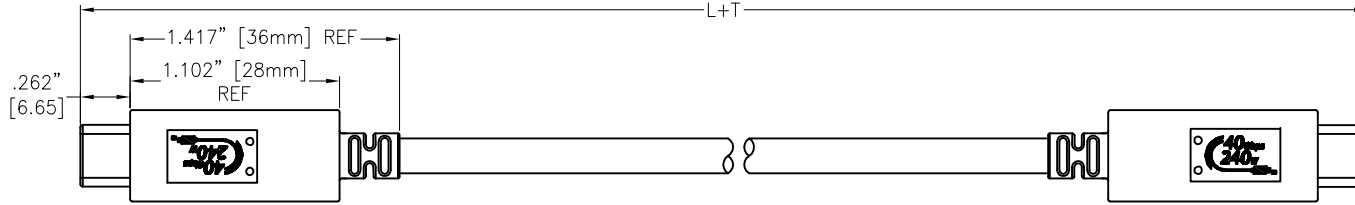
APPROVED: _____

DATE: _____ TITLE: _____

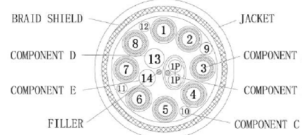
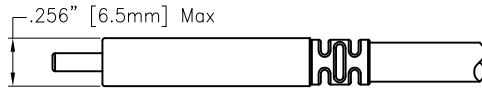
Rev	AWO #	Description	Date	Appr
-		RELEASED	4/12/23	
A		ADDED PAGE2	6/21/23	LH/RC
B		UPDATE SPEC.	9/6/23	WX/TW



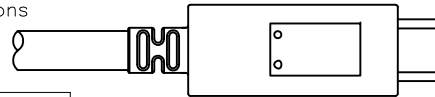
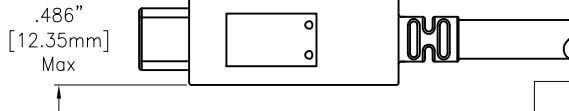
USB C PLUG



USB C PLUG



Please refer to page 2 for specifications



P1		WIRING DIAGRAM				P2	
USB C PLUG		WIRE				USB C PLUG	
PIN	SIGNAL NAME	WIRE NUMBER	CONDUCTOR COMPONENT	SIGNAL NAME	WIRE COLOR	PIN	SIGNAL NAME
A1, B1 A12, B12	GND	1	COMPONENT E	GND_PWRr11 [GND_PWRr12]	SDP1+SDP2 SDP3+SDP4 DRAIN	A1, B1 A12, B12	GND
A4, B4 A9, B9	VBUS	2	COMPONENT D	PWR_VBUS1 [PWR_VBUS2]	RED	A4, B4 A9, B9	VBUS
A5	CC	3	COMPONENT C	CC	BLUE	A5	CC
B5	VCONN	18		PWR_VCONN	YELLOW	B5	VCONN
A6	Dp1	4	COMPONENT B	UTP_Dp	GREEN	A6	Dp1
A7	Dn1	5		UTP_Dn	WHITE	A7	Dn1
A2	SSTxp1	6	COMPONENT A	SDPp1	RED (BLUE)	B11	SSRXp1
A3	SSTxn1	7		SDPn1	RED (WHITE)	B10	SSRXn1
B11	SSRXp1	8		SDPp2	BLUE (WHITE)	A2	SSTxp1
B10	SSRXn1	9		SDPn2	BLUE (BLUE)	A3	SSTxn1
B2	SSTxp2	10	COMPONENT A	SDPp3	GREEN (BLUE)	A11	SSRXp2
B3	SSTxn2	11		SDPn3	GREEN (WHITE)	A10	SSRXn2
A11	SSRXp2	12	COMPONENT A	SDPp4	SILVER (WHITE)	B2	SSTxp2
A10	SSRXn2	13		SDPn4	SILVER (BLUE)	B3	SSTxn2
A8	SBU1	14	COMPONENT C	SBU_A	VIOLET	B8	SBU2
B8	SBU2	15		SBU_B	PINK	A8	SBU1
SHELL	SHIELD	BRIAD	SHIELD	BRIAD	SHELL	SHIELD	SHIELD

With E-Marked IC Table	
E-Marked IC (Vendor)	Voltage/Current
Etron PD3.1 (EPR)	48V/5A

ADAM-P/N	L+T
CA-USB4-CM/CM-0.8M-A	31.496" ±1.969" [800±50mm]
CA-USB4-CM/CM-1M-A	39.370" ±1.969" [1000±50mm]

SPECIFICATIONS:

Connector:

P1 & P2= USB C TYPE 4.0 Plug, Insulator: Color: Black, Pin: 30u" Gold plated, W/Extruded shell
Overmold Color: Black TPE, Inner mold: PE

Cable:

USB4.0, 30C/32/24/26 TCB, O.D: .197" [5mm], Jacket Color: Black TPE

Electrical:

Voltage rating: 150V DC

Contact resistance: 5 ohms max

Insulation resistance: 2 Mohms min

Voltage drop: VBUS 500 mV, GND 250 mV

Electrical Test:

All Assemblies must be 100% Tested for Shorts, Open, Continuity, and Physical Appearance.

Environmental:

Lead free, RoHS compliant



UNLESS OTHERWISE SPECIFIED ALL DIMENSIONS ARE INCHES [MM]. TOLERANCES: EXCEPT AS NOTED

INCHES		HOLES	
.X	± .10	Ø.X	±.10
.XX	± .020	Ø.XX	±.015
.XXX	± .015	Ø.XXX	±.010

DRAWN	JJ	4/12/23
CHECKED	RC	4/12/23
APPROVED		

THIS DRAWING CONTAINS INFORMATION THAT IS PROPRIETARY AND SHOULD NOT BE USED WITHOUT PRIOR WRITTEN PERMISSION FROM ADAM TECH



909 Rahway Avenue,
Union, NJ 07083
Phone: 908-687-5000
Fax: 908-687-5710

TITLE CABLE ASSEMBLY, CABLE USB4.0 #30C/32/24/26
USB 4.0 PLUG TO USB 4.0 PLUG, O.D: .197" [5mm]
USB4 40GBPS (COAXIAL CABLE 30 AWG)

SIZE	PART NO.	REV.
X	CA-USB4-CM/CM-XXM-A	B

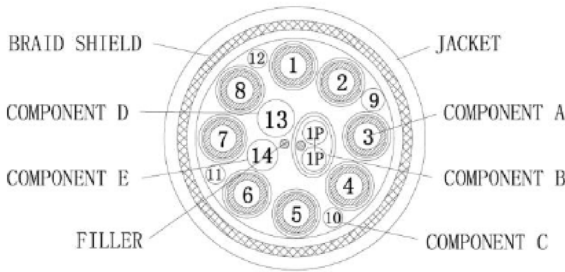
REF: S00013T SCALE: NTS SHEET 1 OF 2

APPROVED: _____

DATE: _____ TITLE: _____

Rev	AWO #	Description	Date	Appr
SEE SHT 1 OF 2 FOR REVISION				

Description	
Rated Voltage (V)	30
Rated Temperature (°C)	80
Product Standard Certification	UL 21104
Flame Standard	
Application	
Internal wiring of Class 2 circuits in Electronic Equipment.	
Reference Standard	
UL758	



Color	
Insulation	
Component A: 8 COAX Insulation Color: Black	
Hot-Polyester Tape Color:	
1. Black	2. White
3. Yellow	4. Brown
5. Green	6. Gray
7. Blue	8. Red
Component B: 1P. White & Green	
Component C: 9. Blue 10. Yellow 11. Red 12. Orange	
Component D: 13. Red	
Component E: 14. Black	

Construction	
Conductor	Silver-Coated Copper
Component A :	8COAX
AWG	30
Construction (± 0.01mm)	7/0.10SC
Stranded Dia.(mm)	0.30
Insulation	FEP
Nom. Thickness (mm)	0.25
Insulation Dia.(± 0.10mm)	0.80
Spiral Shield	Tinned Copper
Construction(± 2T)	50/0.05T
Coverage(%)	≥100%
Shield	melting Copper Foil
Coverage(%)	≥130%
Bind	Hot-Polyester tape
Coverage(%)	≥130%
Component B:	1P
AWG	32
Construction (± 0.008mm)	18/0.05T
Stranded Dia.(mm)	0.24
Insulation	FEP
Nom. Thickness (mm)	0.22
Insulation Dia.(± 0.10mm)	0.58
Drain wire	Stranded Tinned Copper
Construction (± 0.008mm)	18 /0.05 T
Shield	Aluminum/Polyester
Coverage(%)	≥125%
Shield	Hot-Polyester Tape
Coverage(%)	≥125%
Component C:	4C
AWG	32
Construction (± 0.008mm)	18 /0.05T
Stranded Dia.(mm)	0.24
Insulation	FEP
Nom. Thickness (mm)	0.10
Insulation Dia.(± 0.10mm)	0.45

Construction	
Component D:	1C
AWG	24
Construction (± 0.008mm)	52/0.08T
Stranded Dia.(mm)	0.66
Insulation	FEP
Nom. Thickness (mm)	0.12
Insulation Dia.(± 0.10mm)	0.95
Component E:	1C
AWG	26
Construction (± 0.008mm)	26/0.08T
Stranded Dia.(mm)	0.47
Insulation	FEP
Nom. Thickness (mm)	0.14
Insulation Dia.(± 0.10mm)	0.70
Component A B C D E Cable Together	
FILLER	Cotton Yarn
Bind	Insulation tape
Coverage(%)	≥125%
Braid Shield	Tinned Copper
Construction(mm)	16/0.08T
Coverage(%)	75%
Jacket	TPE
Nom. Thickness(mm)	0.4
Outer Dia.(± 0.20mm)	5.0
Jacket Color	BLACK
(Matte)	

UNLESS OTHERWISE SPECIFIED ALL DIMENSIONS ARE INCHES [MM]. TOLERANCES: EXCEPT AS NOTED		
INCHES		HOLES
.X ± .10	Ø.X ± .10	
.XX ± .020	Ø.XX ± .015	
.XXX ± .015	Ø.XXX ± .010	
DRAWN	JJ	4/12/23
CHECKED	RC	4/12/23
APPROVED		
THIS DRAWING CONTAINS INFORMATION THAT IS PROPRIETARY AND SHOULD NOT BE USED WITHOUT PRIOR WRITTEN PERMISSION FROM ADAM TECH		

909 Rahway Avenue,
Union, NJ 07083
Phone: 908-687-5000
Fax: 908-687-5710

TITLE CABLE ASSEMBLY, CABLE USB4.0 #30C/32/24/26 USB 4.0 PLUG TO USB 4.0 PLUG, O.D: .197" [5mm] USB4 40GBPS (COAXIAL CABLE 30 AWG)		
SIZE X	PART NO. CA-USB4-CM/CM-XXM-A	REV. B
REF: S00013T	SCALE: NTS	SHEET 2 OF 2