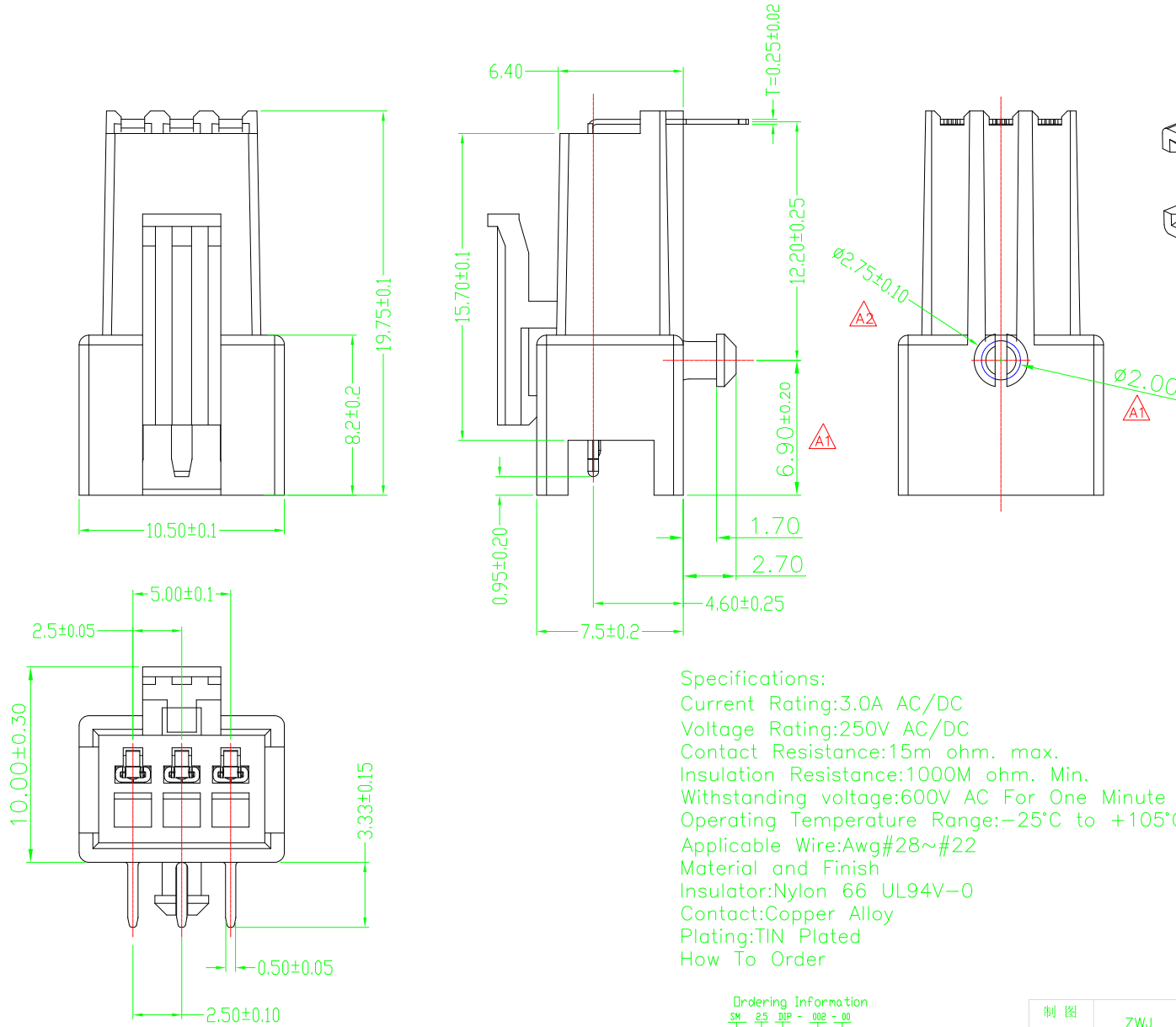


RoHS Compliant

版本 REV.	设定内容 MODIFICATION	日期 DATE	修改 DRAW	核准 APPROVE
A0	NEW ISSUE	19.07.31		
A1	增加蘑菇脚	2020.8.2		



Specifications:  
 Current Rating:3.0A AC/DC  
 Voltage Rating:250V AC/DC  
 Contact Resistance:15m ohm. max.  
 Insulation Resistance:1000M ohm. Min.  
 Withstanding voltage:600V AC For One Minute  
 Operating Temperature Range:-25°C to +105°C  
 Applicable Wire:Awg#28~#22  
 Material and Finish  
 Insulator:Nylon 66 UL94V-0  
 Contact:Copper Alloy  
 Plating:TIN Plated  
 How To Order

Dimension:

Circuits	Dimension:	
	A	B
02	2.5	8.0
03	5.0	10.5
04	7.5	13.0
05	10.0	15.5
06	12.5	18.0
07	15.0	20.5
08	17.5	23.0
09	20.0	25.5
10	22.5	28.0
11	25.0	30.5
12	27.5	33.0

Ordering Information  
 SM 2.5 DIP - 002 - 00  
 SM SERIES CONNECTOR TYPE  
 2.5 TYPE FEMALE(Receptacle)  
 DIP STYLE  
 002 FOLLOW NUMBER  
 00 TIN-plated

制图 DRAWN	ZWJ	单位 UNIT	mm	TOLERANCE UNLESS OTHERWISE SPECIFIED	HJ-Tech 东莞市皇捷通讯科技有限公司 DONGGUA HUANGJIE COMMUNICATION TECHNOLOGY CO., LTD.
审核 CHECKED		比例 SCALE	1:1	.X±0.25 X'±3'	品名 TITLE
核准 APPROVE		张数 SHEET	1/1	.XX±0.15 .X'±1'	3P母座SIM
		角法 PROJ.	角法 PROJ.	.XXX±0.05 .XX'±	图号 DWG NO.
					2LS00S0019