

632692-000 ✓ ACTIVE

RAYCHEM | RAYCHEM GelCap

TE Internal #: 632692-000

Joints & Splices, AMERICAS, Cold Shrink / Cold Applied, ≤ 1 kV, Motor Connection Kit, Cross-Section 35 – 105 mm² [#2 – 4/0 AWG /kcmil], RAYCHEM GelCap

[View on TE.com >](#)



Energy & Power > Power Cable Accessories > Joints & Splices



Joints & Splice Product Availability: **AMERICAS**

Installation Instruction: **English**

Joints & Splice Technology: **Cold Applied, Cold Shrink**

Joints & Splice Voltage Class: **≤ 1 kV**

Joints & Splice Product Type: **Motor Connection Kit**

Features

Product Type Features

Component Design	PowerGel Sealing Gel
Adhesive Coating	Silicone Gel
Joints & Splice Technology	Cold Applied, Cold Shrink
Joints & Splice Product Type	Motor Connection Kit

Electrical Characteristics

Joints & Splice Voltage Class	≤ 1 kV
-------------------------------	-------------

Body Features

Flexibility	Semi-Flexible
-------------	---------------

Mechanical Attachment

Mechanical Reinforcement	Molded Cap Clamp
--------------------------	------------------

Dimensions

Bolt Width (Max)	.85 mm, 22 mm
Lug Barrel Length (Max)	38 mm[1.5 in]
Bolt Length (Max)	1.3 mm, 33 mm
GelCap Length (Nominal)	152 mm[6 in]
Lug Overall Length (Max)	76 mm[3 in]
Conductor Range (Main)	2 – 0000 AWG



Cross-Section Range	35 – 105 mm ² [#2 – 4/0 AWG/kcmil]
Cable Cross-Section (Max) (Main)	105 mm ²
Cable Cross-Section (Min) (Main)	35 mm ²

Usage Conditions

Environmental Resistance	ASTM D1149, 168 Hours @40°C, 50 ppm
Operating Temperature Range	-40 – 105 °C
Chemical Resistance	ASTM D543, Sulfuric Acid, Sodium Hydroxide, Transformer & Motor Oil

Operation/Application

Thermal Resistance	Applicable for Low Temperatures, Applicable for High Temperatures, Flame-Retardant
Mechanical Resistance	Abrasion Resistant (2040 gm wt, 4000 cycles, 5% max thickness loss), Against Mechanical Impact or Damage
UV-Stabilized	ASTM G53, UVB, 4000 hours, 4 hour on/off cycle

Industry Standards

Standards	ANSI C119.1
UL Rating	UL 486A-486B

Product Availability

Joints & Splice Product Availability	AMERICAS
--------------------------------------	----------

Packaging Features

Standard Pack	5
Packaging Quantity	1
Packaging Method	Bag

Other

Product Use	PowerGel-filled cap for motor lead and stub splice connections
Installation Instruction	English

Product Compliance

For compliance documentation, visit the product page on [TE.com](https://www.te.com)>

EU RoHS Directive 2011/65/EU	Compliant
EU ELV Directive 2000/53/EC	Compliant

China RoHS 2 Directive MIIT Order No 32, 2016

No Restricted Materials Above Threshold

EU REACH Regulation (EC) No. 1907/2006

Current ECHA Candidate List: JUNE 2023 (235)

Candidate List Declared Against: JAN 2021 (211)

Does not contain REACH SVHC

Halogen Content

Low Halogen - Br, Cl, F, I < 900 ppm per homogenous material. Also BFR/CFR/PVC Free

Solder Process Capability

Not applicable for solder process capability

Product Compliance Disclaimer

This information is provided based on reasonable inquiry of our suppliers and represents our current actual knowledge based on the information they provided. This information is subject to change. The part numbers that TE has identified as EU RoHS compliant have a maximum concentration of 0.1% by weight in homogenous materials for lead, hexavalent chromium, mercury, PBB, PBDE, DBP, BBP, DEHP, DIBP, and 0.01% for cadmium, or qualify for an exemption to these limits as defined in the Annexes of Directive 2011/65/EU (RoHS2). Finished electrical and electronic equipment products will be CE marked as required by Directive 2011/65/EU. Components may not be CE marked. Additionally, the part numbers that TE has identified as EU ELV compliant have a maximum concentration of 0.1% by weight in homogenous materials for lead, hexavalent chromium, and mercury, and 0.01% for cadmium, or qualify for an exemption to these limits as defined in the Annexes of Directive 2000/53/EC (ELV). Regarding the REACH Regulation, the information TE provides on SVHC in articles for this part number is based on the latest European Chemicals Agency (ECHA) 'Guidance on requirements for substances in articles' posted at this URL: <https://echa.europa.eu/guidance-documents/guidance-on-reach>

Compatible Parts

TE Part # 292284-000
GELCAP-4(B5)TE Part # 986734-000
GELCAP-2(B5)TE Part # F40658-000
GELCAP-SL-2/0-3HOLE(B10)TE Part # 566376-000
GELCAP-1(B5)TE Part # CP1967-000
GELCAP-SL-2/0-3HOLE-B100Also in the Series | **RAYCHEM GelCap**



Joints & Splices(4)



Street Lighting Connectors(2)

Customers Also Bought



TE Part #1SNK900001R0000
BAM4



TE Part #2-1393104-5
KRPA-11AG-120=KRPA-



TE Part #1SNA105031R1400
M4/6



TE Part #1SNA115541R1100
D2.5/6.DA



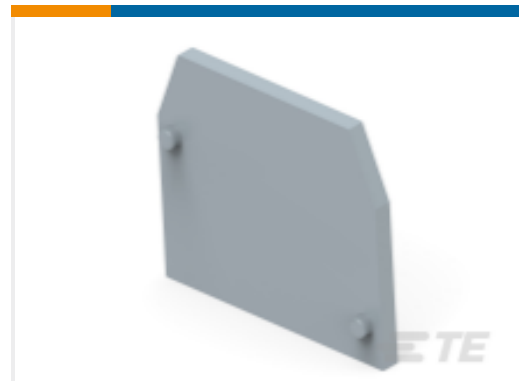
TE Part #1SNA165113R1600
M4/6.P



TE Part #1SNA165809R0100
D4/6.P



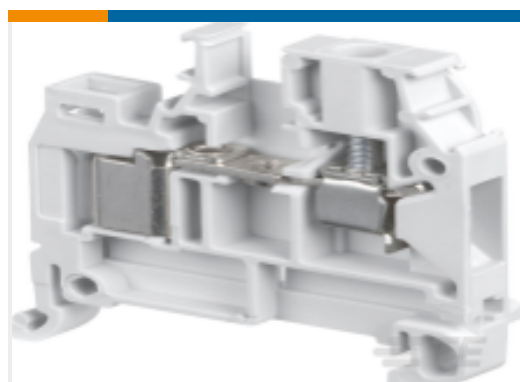
TE Part #1SNA116951R1500
FEM8S



TE Part #1SNA118368R1600
FEM6



TE Part #1SNA176667R0400
BJMI6-10



TE Part #1SNA199039R2200
D4/6.ADO

Documents

Datasheets & Catalog Pages

[GELCAP-MOTOR-CONNECTION-CABLE-ACCESSORIES](#)

English

Instruction Sheets

[Instruction Sheet \(U.S.\)](#)

English