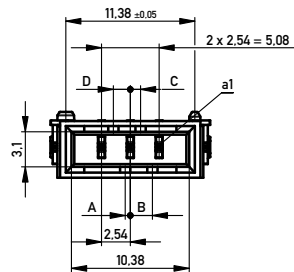
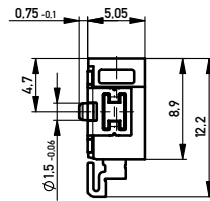
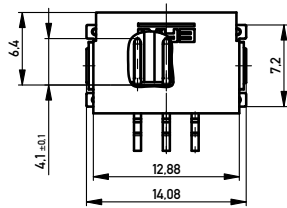
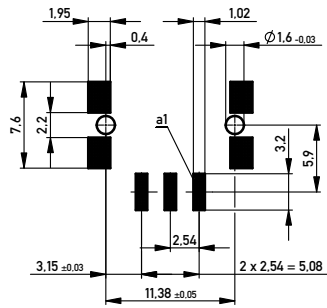


Leiterplatten-Layout Vorschlag für SMT
PCB-Layout Proposal for SMT



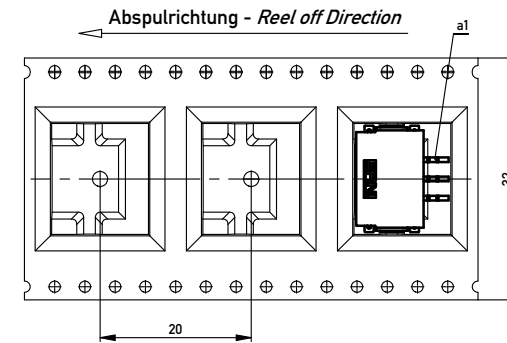
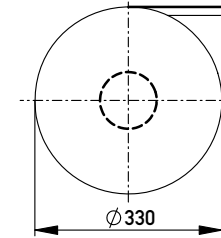
Anforderungsstufe 1
Performance Level 1

Kontaktbereich vergoldet
Mating Area gold plating

Anschlussbereich verzinkt 4-6 µm
Terminal Area 4-6 µm tin plating

Koplanarität der Anschlüsse ≤ 0.1 mm
Coplanarity Area of Termination ≤ 0.1 mm

Verpackt in Gurtverpackung
Tape on Reel Packaging
Verpackungseinheit: 440 Stück
Packaging unit: 440 pcs



454191		weiß white	0.45	1.95	0.9	1.5	Codierung wie Variante schwarz Encoding such variant black
284055		rot red	3.15	0.75	3.6	1.2	
284054		grün green	2.25	0.15	2.7	0.3	
284053		blau blue	1.35	1.05	1.8	0.6	
284052		schwarz black	0.45	1.95	0.9	1.5	
Ident-Nr. part-no.	Codierung coding	Farbe color	A	B	C	D	Bemerkung note

Information:		Tolerances		Scale	3:1
All rights reserved. Only for Information. To ensure that this is the latest version of this drawing, please contact one of the ERNI companies before using.		Subject to modification without prior notice. Drawing will not be updated.		Designation M 2.54 SRC-A, 3-polig	
e		15.04.2013		www.ERNI.com	
Index	Date			224919	I A2
				Class	SRCA

Mouser Electronics

Authorized Distributor

Click to View Pricing, Inventory, Delivery & Lifecycle Information:

[TE Connectivity:](#)

[284052](#) [284053](#) [284054](#) [284055](#) [284052-E](#) [284053-E](#) [284054-E](#) [284055-E](#)