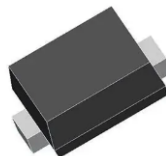


Features

- Low VF
- High reliability
- We declare that the material of product compliance with RoHS requirements and Halogen Free
- S-prefix for automotive and other applications requiring unique site and control change requirements; AEC-Q101 qualified and PPAP capable

Application

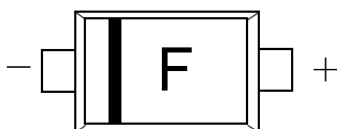
- Low current rectification



SOD-923 top view



Schematic diagram



Marking and pin assignment

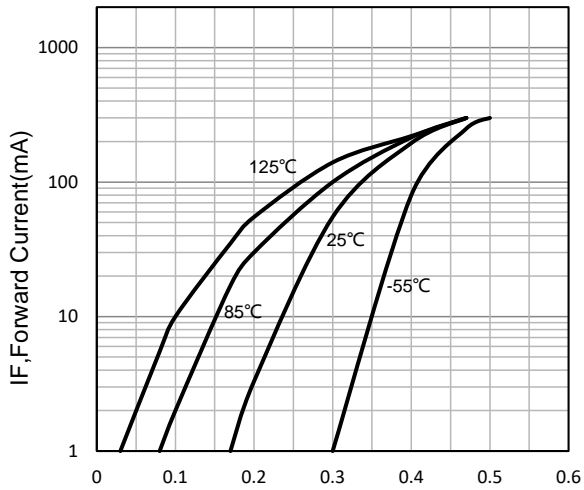
Maximum Ratings ($T_a=25^\circ\text{C}$ unless otherwise noted)

Symbol	Parameter	Value	Unit
V_R	Reverse voltage (DC)	30	V
I_O	Average rectified forward current	100	mA
I_{FSM}	Forward current surge peak (60Hz · 1cyc)	500	mA
T_J	Junction temperature	125	$^\circ\text{C}$
T_{stg}	Storage temperature	-40~+125	$^\circ\text{C}$

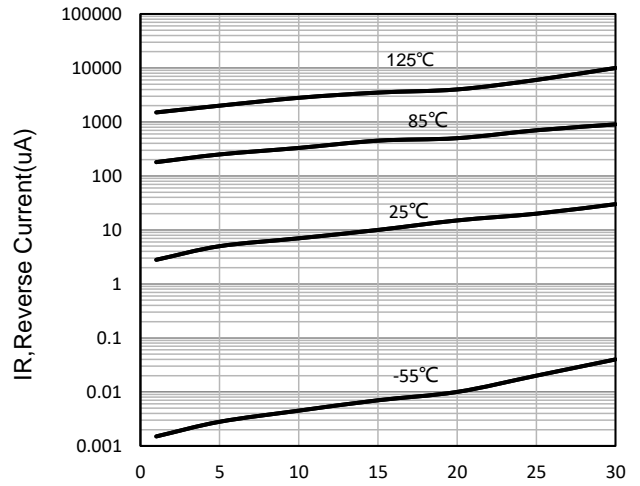
Electrical Characteristics ($T_J=25^\circ\text{C}$ unless otherwise noted)

Symbol	Parameter	Condition	Min	Typ	Max	Unit
$V_{(BR)}$	Reverse voltage	$I_R=10\mu\text{A}$	30	--	--	V
I_R	Reverse current	$V_R=10\text{V}$	--	--	10	μA
V_F	Forward voltage	$I_F=10\text{mA}$	--	--	0.35	V
		$I_F=20\text{mA}$	--	--	0.4	V

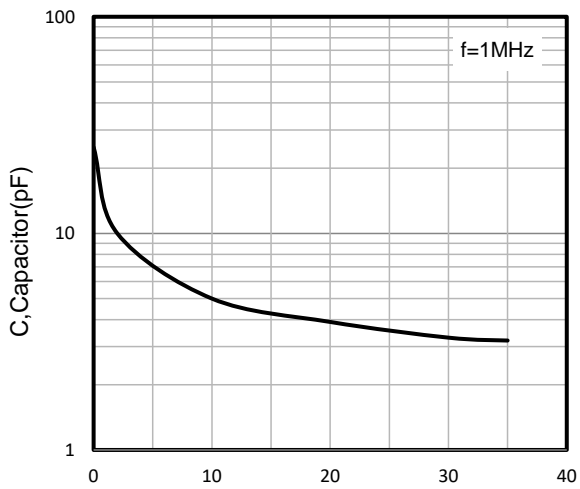
Typical Operating Characteristics



VF, Forward Voltage(V)
Forward Characteristics

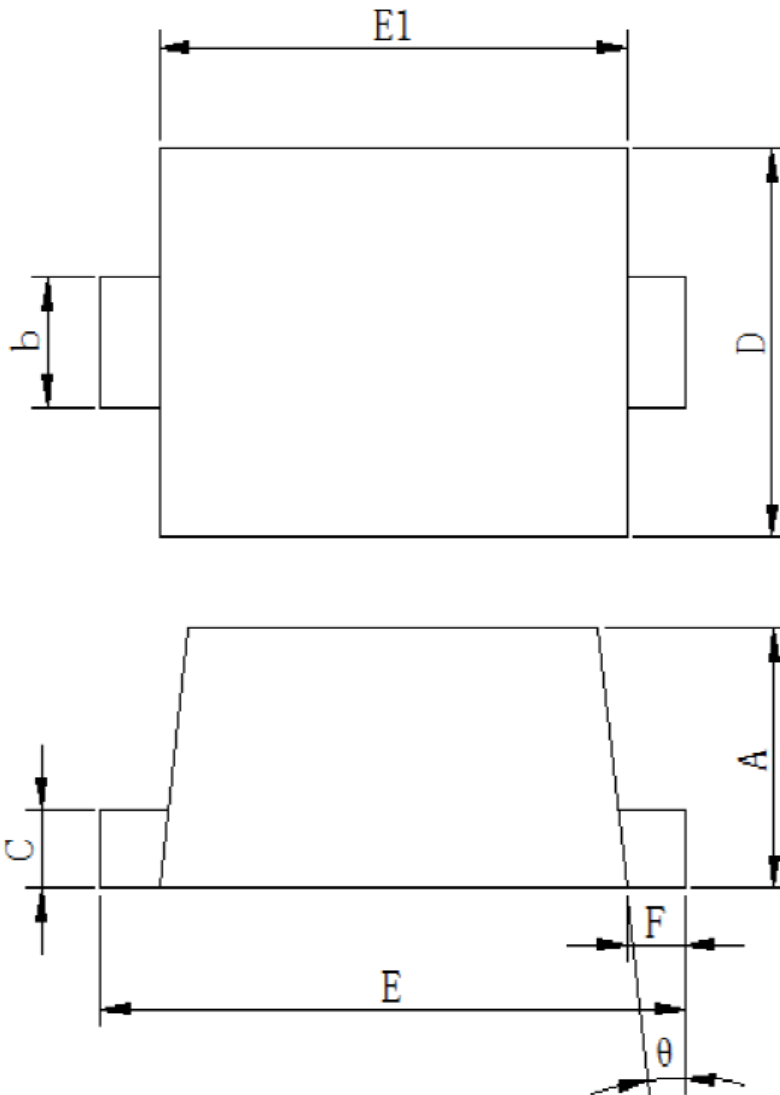


VR, Reverse Voltage(V)
Reverse Characteristics



VR, Reverse Voltage(V)
Capacitor Characteristics

SOD-923 Package information



Symbol	Dimensions in Millimeters(mm)		Dimensions In Inches	
	Min	Max	Min	Max
A	0.360	0.440	0.014	0.017
b	0.150	0.250	0.006	0.010
c	0.070	0.170	0.003	0.007
D	0.550	0.650	0.022	0.026
E	0.950	1.100	0.037	0.043
E1	0.750	0.850	0.030	0.033
F	0.050	0.150	0.002	0.006
θ	-	5°	-	5°