


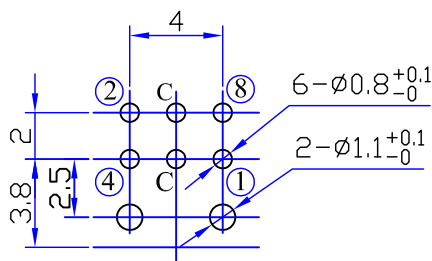
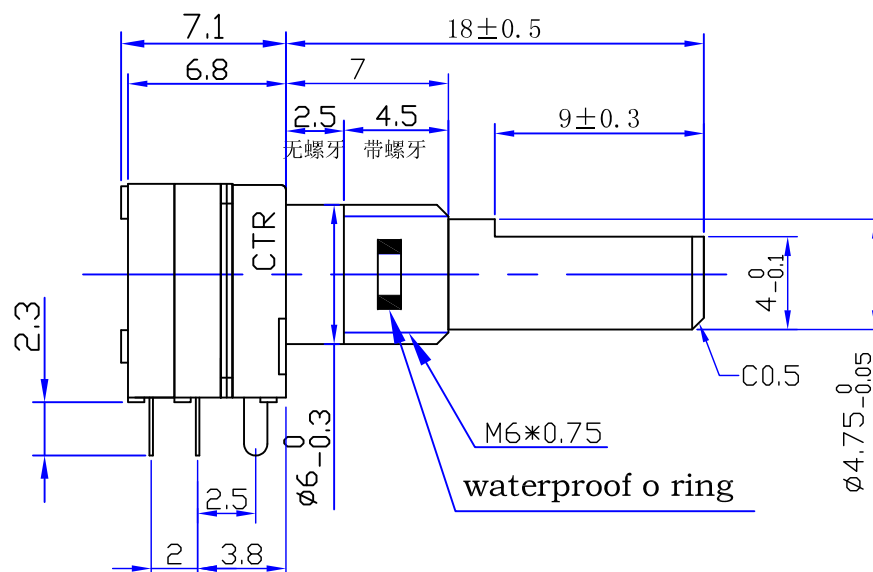
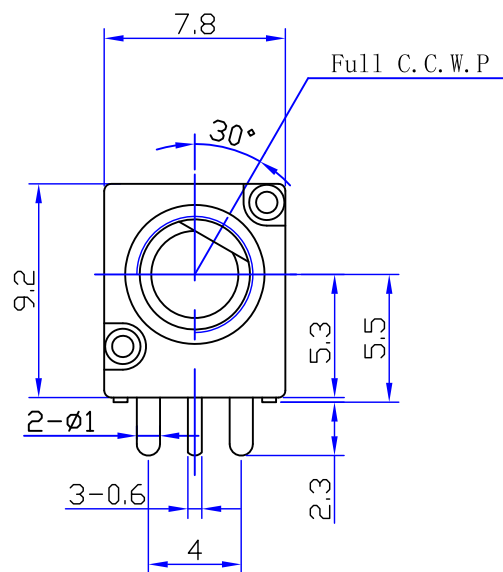
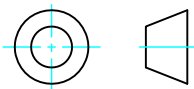


# 编码器规格书

## ENCODER SPECIFICATIONS

<b>1 一般事项</b> <b>General information</b>	
1-1 适用型号 Applicable models	ED08C 系列 ED08C Series
1-2 使用环境温度 Usage environment temperature	- 20℃ ~ + 70℃
1-3 保存环境温度 Storage environment temperature	- 40℃ ~ + 70℃
1-4 测试条件 Test condition	温度: 5~35℃, 湿度: 45~85%HR Temperature:5~35℃, Moisture:45~85%HR
1-5 环保要求 Environmental requisition	本产品符合 RoHS 指令 This product is compliant with RoHS Directive
1-6 耐焊接热 Soldering heat-resistance	<p>1、手工焊接温度最高 350℃ ± 5℃, 3 秒; 2、自动焊接温度最高 260℃ ± 5℃, 3 秒; 基板表面预热温度最高 100℃ 1 分钟以内; 3、以上过程均保证在 1 到 2 次; 4、不适用回流焊。</p> <p>1. Soldering iron Max ,350℃ ± 5℃ a t 3 sec. 2. Au to soldering 260℃ ± 5℃ max. at 3 sec. Pre heating t temperature of board surface: 100℃ max. at within 1 minutes. 3. To guarantee the above process at 1 or 2 times. 4. No apply the reflow soldering.</p>
1-7 原产地 Country of origin	中国 China
<b>2 构造</b> <b>Construction</b>	
2-1 外观 Appearance	各部件应完整, 无锈蚀、裂痕、电镀不良 Every part should finished, be not exist rust flaw crack and bad plating
2-2 寸法 M easurements	依照图面规定 Under conditions prescribed by design drawing.
<b>3 机械性能</b> <b>Mechanical characteristics</b>	
3-1 全回转角度 Total rotational angle	300° ± 5°
3-2 回转力矩 Rotational torque	100~400gf.cm (旋转速度: 60° /1 秒) 100~400gf.cm (Rotational velocity : 60° /1 Sec.)
3-3 回转止动强度 Rotational stopper strength	3Kgf.cm
3-4 定位数 Number of detent	36 个定位 36 Detents
3-5 切换角度 Ch ange-Over angle	20° ± 3°

3-6 轴压引强度 Pull-Push Strength of Shaft	≥10Kgf			
3-7 螺母锁紧强度 Nut tightening strength	≥8Kgf.cm			
3-8 轴摇晃度 Shaft wobble	在单个轴顶端施加压力 250gf, 轴径向偏移量小于: 0.7*轴长 L 尺寸/30mm On the tip of the single shaft exert pressure 250gf , Shaft radial deviant be smaller than:0.7*shaft long L size/30mm			
<b>4 电气性能 Electrical characteristics</b>				
4-1 额定电压 Voltage rating	DC 5V			
4-2 额定电流 Current rating	1mA			
4-3 耐电压 Voltage proof	AC 300V 1 分钟以上 (端子和本体之间, 端子和轴芯之间) 1 Minute at AC 300V (Between terminal – case, Between terminal –shaft).			
4-4 最大使用电流 Maximum operating current	2.5mA			
4-6 绝缘抵抗 Insulation resistance	DC 250V 100M Ω 以上 (端子和本体之间, 端子和轴芯之间) 100M Ω min. At DC 250V (Between terminal – case, Between terminal –shaft).			
4-7 回转寿命 Rotational life	<input checked="" type="checkbox"/> 30,000 cycles 无负荷状态以每小时 600 周旋转, 达到寿命后: On the without load status according to the 600 r./h rotation, after achieve the life: 1、接触抵抗 1K Ω 以下; Contact resistance:1K Ω max. 2、绝缘抵抗 10M Ω 以上 D C250V (端子和本体之间, 端子和轴芯之间); Insulation resistance:10M Ω min. At DC 25 0V. (Betw een term inal – c ase, Between terminal –shaft). 3、耐电压 A C100V 1 分钟 (端子和本体之间, 端子和轴芯之间), 绝缘阻抗无击穿; Withstanding vol tage : AC 100V at 1 m inute (Between terminal – case, Between terminal –shaft). No subversion on insulation resistance. 4、回转力矩: 满足第 3-2 项; Rotational torque : Content item No. 3-2. 5、外观和结构无损坏。 No damage on appearance and structure			
<b>5 防水性能 Waterproof standard characteristics</b>				
6-1 防水标准 Waterproof standard	<input type="checkbox"/> 不适用 No apply <input checked="" type="checkbox"/> 七级防水 编码器轴芯轴套置于水中 1 米深处, 其它部件密封后暴露在标准大气压中, 30 分钟后电位器内部未进水。 Grade -7 Of Waterproof standard Encoder's Shaft and Bush in water 1M deep, other component sealed after exposed to the standard atmosphere, after 30 minutes no water into the Encoder's inner.			
<b>东莞市长泰尔电子有限公司</b> <b>DONG GUAN CHANG TAI ER ELECTRONIC CO., LTD.</b>		制作 Designed By	审核 Checked By	核准 Approved By
				



PCB Mounting Hole Detail

旋转方向	C.W															
编码																
引出端	1	2	3	4	5	6	7	8	9	10	11	12	13	14	15	16
④	0	0	0	0	1	1	1	1	1	1	1	1	0	0	0	0
①	0	1	1	0	0	1	1	0	0	1	1	0	0	1	1	0
②	0	0	1	1	1	1	0	0	0	0	1	1	1	1	0	0
⑧	0	0	0	0	0	0	0	0	1	1	1	1	1	1	1	1

### 东莞市长泰尔电子有限公司

未注尺寸公差	比例	3:1	版本	1.0	设计	审核	批准
L≤1.0时 ±0.1	品名	ED08C安装尺寸图			研发工程部 2022.11.01 李阳	研发工程部 2022.11.01 喻钊	研发工程部 2022.11.01 彭先炎
1.0<L≤10时 ±0.3	图号	ED08C110-FE18S9.0-A16-1040					
10<L≤30时 ±0.5							
30<L≤100时 ±1.0							