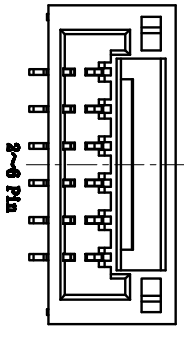
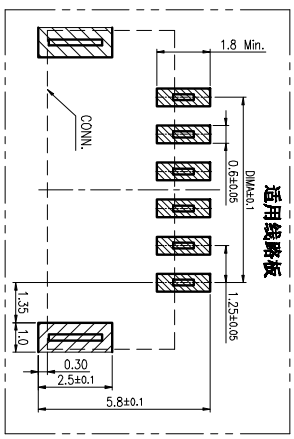
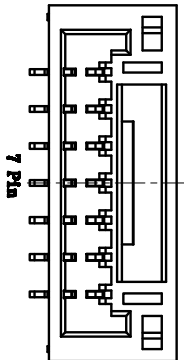
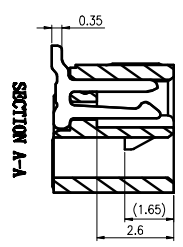
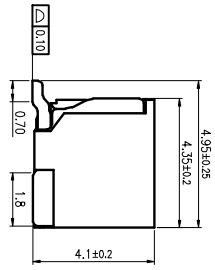
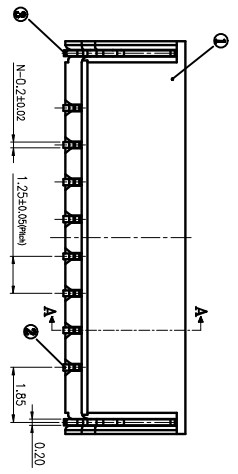
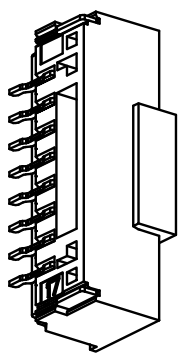
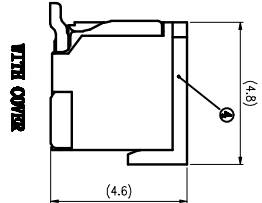
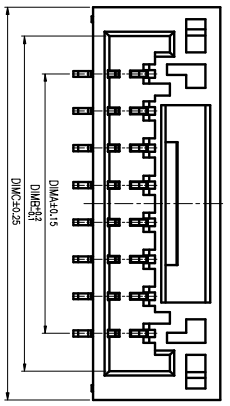


REV(版本)	DESCRIPTION(描述)	NAME(名字)	DATE(日期)

- 技术指标:**
1. 零件表面应无油污、无毛边、无明显故障、缺陷、裂纹等现象。
 2. 温度范围: -25°C~85°C
 3. 额定电压: 50V, AC/DC.
 4. 接触电阻: $\leq 5\text{m}\Omega$.
 5. 绝缘电阻: $\geq 1000\Omega$.
 6. 额定电流: 1.5A, AC/DC.



CKT	DimA	DimB	DimC
2	1.25	3.80	5.75
3	2.50	5.05	7.00
4	3.75	6.30	8.25
5	5.00	7.55	9.50
6	6.25	8.80	10.75
7	7.50	10.05	12.00
8	8.75	11.30	13.25
9	10.00	12.55	14.50
10	11.25	13.80	15.75
11	12.50	15.05	17.00
12	13.75	16.30	18.25
13	15.00	17.55	19.50
14	16.25	18.80	20.75
15	17.50	20.05	22.00
16	18.75	21.30	23.25

序号	项目	描述	备注
1	塑壳	LTP	
2	端子	铜	
3	晶片	铜	

一般公差 (TOLERANCE)
 X ± 0.50 XX ± 1.10
 Y ± 0.20 ZXX ± 0.05
 ANGLES ± 1°

深圳市连欣科技有限公司

品名 (TITLE)	规格 (SPEC)	料号 (MATERIAL NO)	图号 (DRAWING NO)	校对 (CHECK)	审核 (APPRO)
Pitch: 1.25mm 立贴带扣 SMT	1:1	XDFW-0128-**-P	Y1A0	Alter	
比例 (SCALE)	单位 (UNITS)	页码 (SHEET)	尺寸 (SIZE)	版数 (REV)	
1:1	mm	1 OF 1	A4	A	