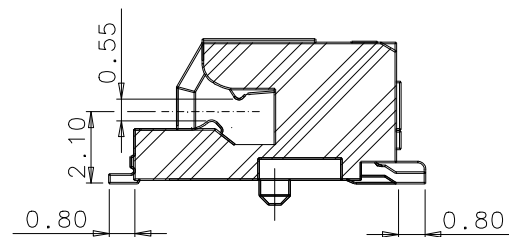
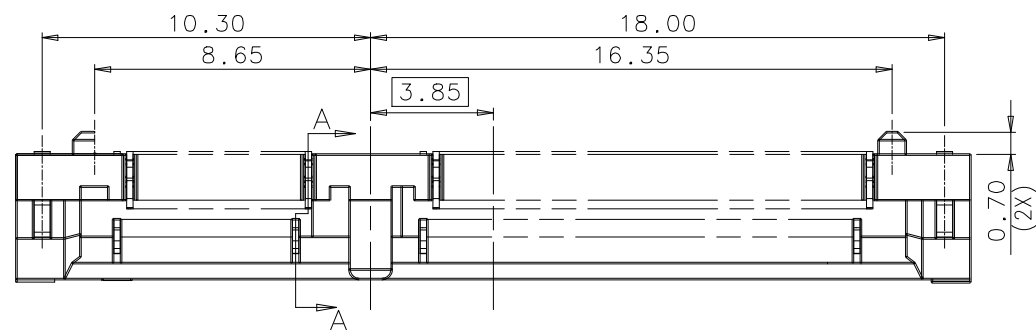
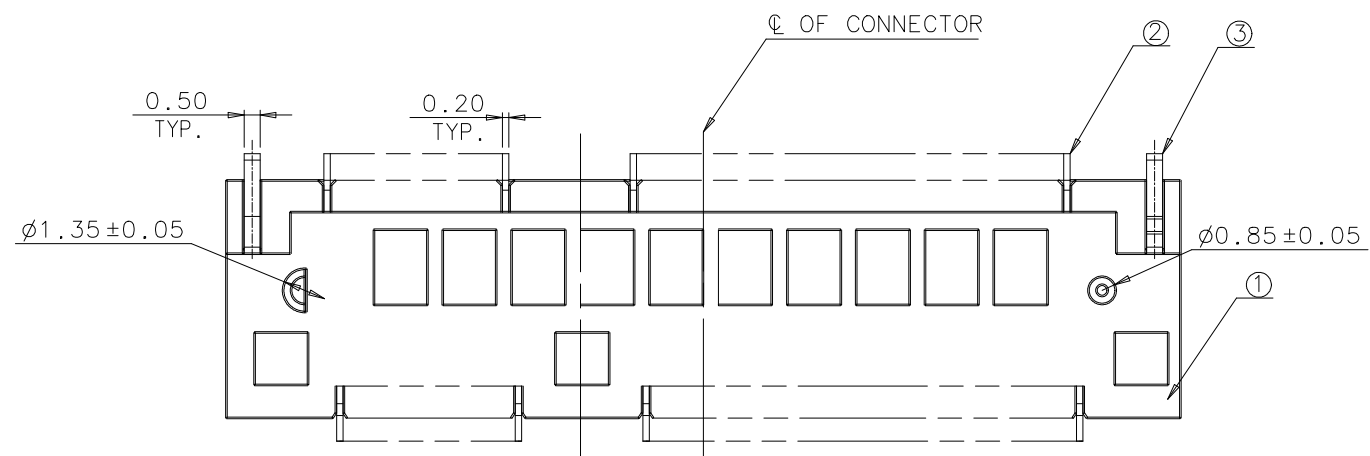
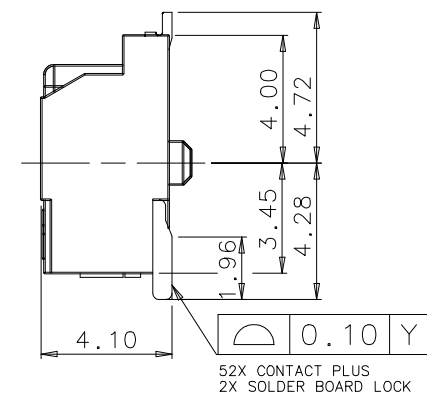
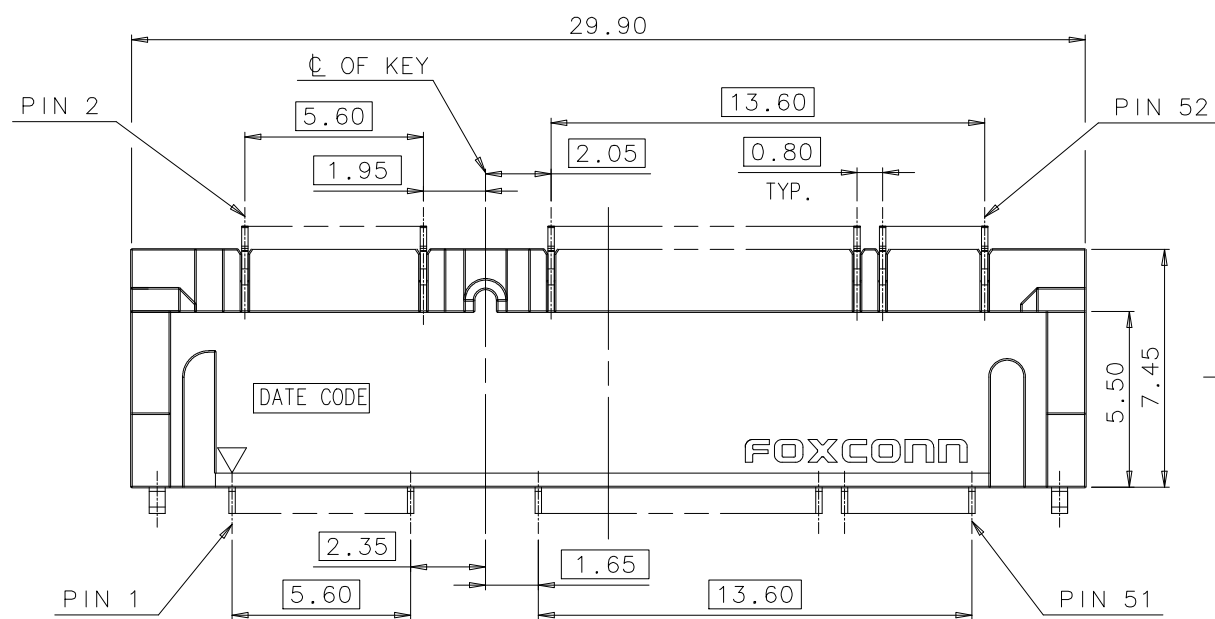


IDEAS GENERATED DRAWING, DO NOT CHANGE BY HAND

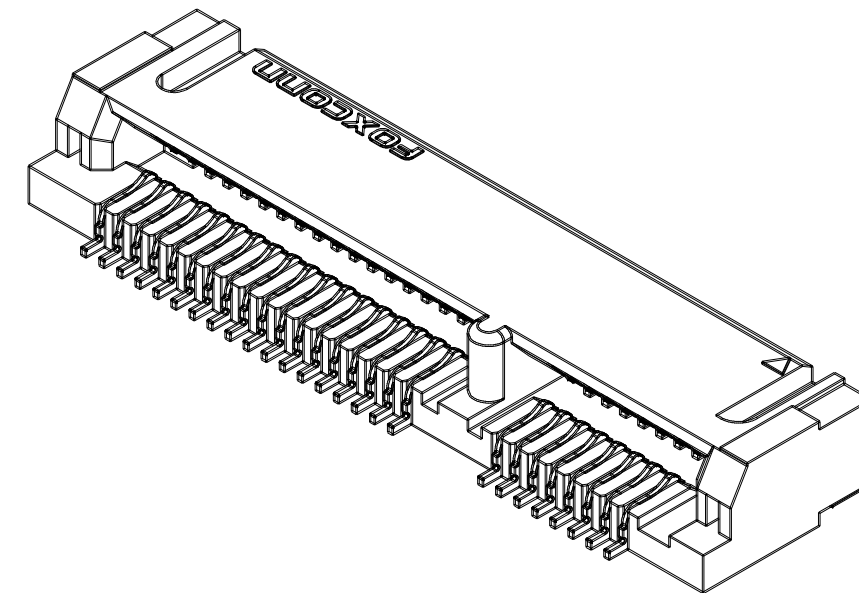
REV.	ECN. NO.	APPD.
A	HC-03-4104	Bruce Wu
B	HC-05-5238	Paul Huang
C	BC-07-7041028	Bruce Wu
D	BC-08-7010753	Bruce Wu
E	BC-08-7120706	Herry Yang



SECTION A-A



52X CONTACT PLUS  
2X SOLDER BOARD LOCK



PART NO. DESCRIPTION: A S 0 B2 2 \* - S 40 \* - \* \*

MEMORY MODULE SOCKET  
HORIZONTAL TYPE  
SINGLE ROW  
NO. OF POS.  
B2= 52 POS.  
SMT

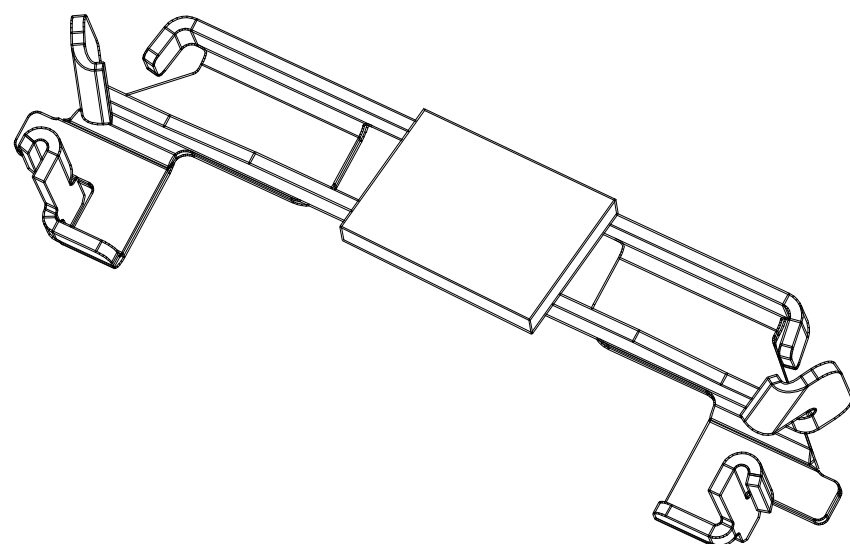
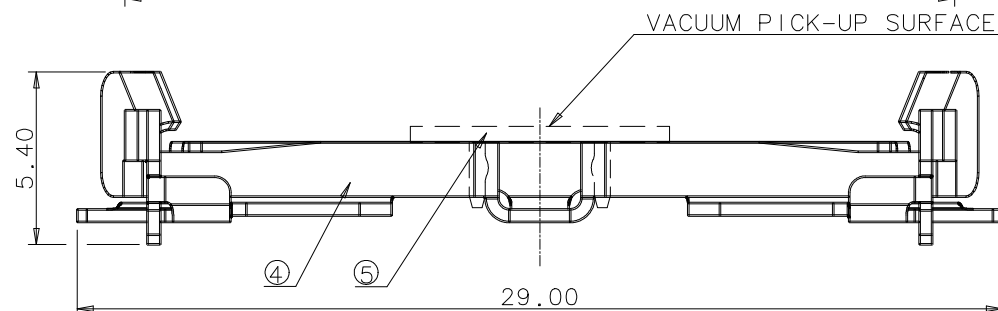
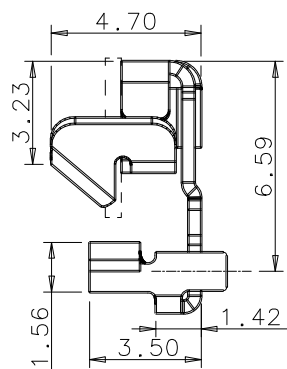
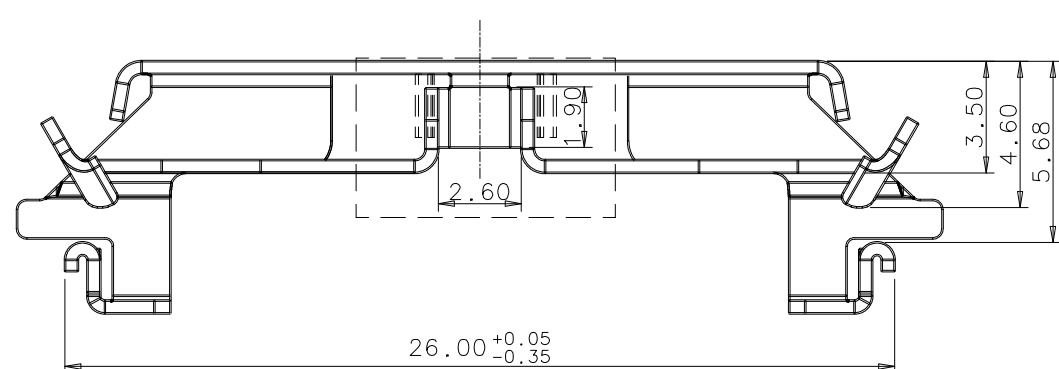
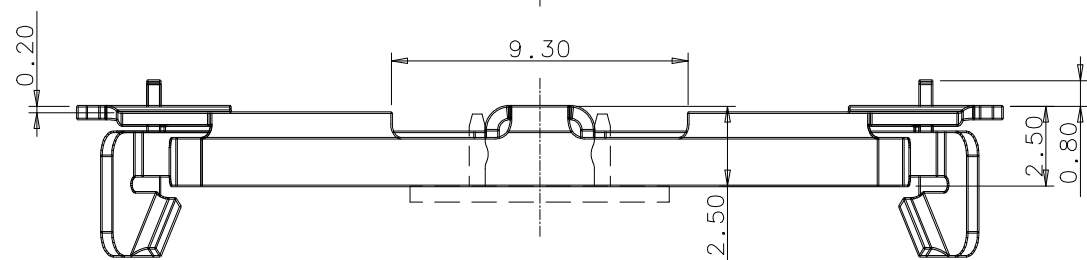
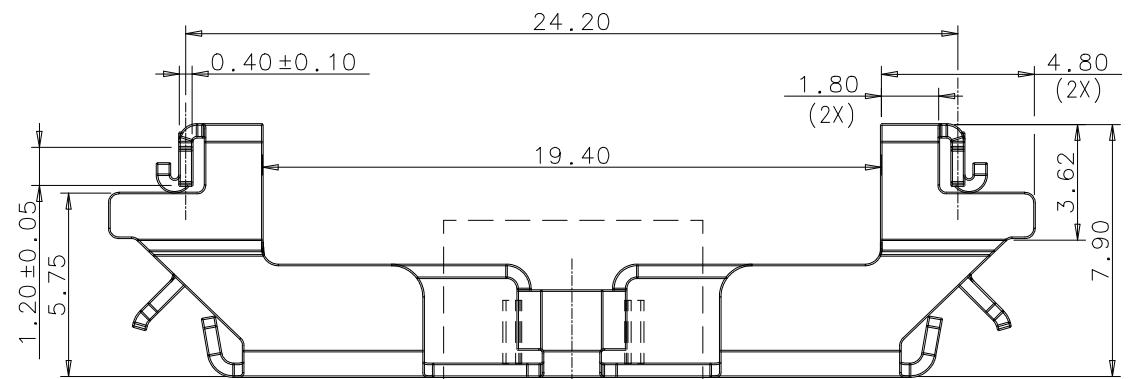
F=LEAD FREE  
7=TAPE & REEL  
N=CONNECTOR  
K=ONLY CLIP  
40=4.0mm HEIGHT  
SHORT BODY

CONTACT AREA PLATING  
1=GOLD FLASH  
3=30u" Min. GOLD PLATING  
6=10u" Min. GOLD PLATING

X. ± 0.30	X° ± 2°	UNITS	mm	NAME (INTENDED USE)	<b>FOXCONN</b> HON HAI PRECISION IND. CO., LTD. TAIPEI, TAIWAN, R.O.C.		
.X ± 0.25	.X° ± 1°	MAT'L		MINI PCI EXPRESS CONNECTOR			
.XX ± 0.15	.XX° ±			PART NO. (INTENDED USE)	TITLE:		
.XXX ±	.XXX° ±	FINISH		ASOB22*-S40*-**	CUSTOMER DRAWING		
THESE DRAWINGS AND SPECIFICATIONS ARE THE PROPERTY OF HON HAI PRECISION IND. CO., LTD. AND SHALL NOT BE REPRODUCED, COPIED OR USED IN ANY MANNER WITHOUT THE PRIOR WRITTEN CONSENT OF HON HAI PRECISION IND. CO., LTD.				APPD: Herry Yang	DWG NO.:		
				CHKD: Alex Wong	317-0100-084		
				DR: Liu Fenglan 9/25'08			
					SCALE	SHEET	REV.
					N/A	1/7	E

IDEAS GENERATED DRAWING, DO NOT CHANGE BY HAND

REV.	ECN.	NO.	APPD.



SPECIFICATIONS:

1. ELECTRICAL CHARACTERISTICS:

- 1-1 CURRENT RATING: 0.50 A MAX per power contact.
- 1-2 VOLTAGE RATING: 50 VAC per contact.
- 1-3 LOW LEVEL CONTACT RESISTANCE: 55mΩ max. initial, ΔR =20mΩmax.
- 1-4 INSULATION RESISTANCE: 500MΩ min. at 500 V DC.
- 1-5 DIELECTRIC WITHSTANDING VOLTAGE: 300 V AC (RMS) AT 60Hz, FOR 1 MINUTE.
- 1-6 INSERTION LOSS:  $f \leq 1.25$  GHz:  $\leq 1$ dB;  $1.25 < f \leq 3.75$  GHz:  $\leq 1.6 \times (f - 1.25) + 1$ dB
- 1-7 RETURN LOSS:  $f \leq 1.3$ GHz:  $\leq -12$ dB;  $1.3 < f \leq 2$ GHz:  $\leq -7$ dB;  $2 < f \leq 3.75$ GHz:  $\leq -4$ dB
- 1-8 CROSSTALK NEXT:  $f \leq 1.25$ GHz:  $\leq -32$ dB;  $1.25 < f \leq 3.75$ GHz:  $\leq -(32 - 2.4 \times (f - 1.25))$  dB
- 1-9 TEMPERATURE RISE VERSUS CURRENT:  $< 30^\circ\text{C}$  at rated current per EIA-364-70A, method 2.

2. MECHANICAL CHARACTERISTICS:

- 2-1 DURABILITY: 50 mating/unmating cycles.
- 2-2 MATING/UNMATING FORCE: 2.3 kgf max. per connector.

3. ENVIRONMENTAL CHARACTERISTICS:

- 3-1 USEFUL FIELD LIFE: 5 years.
  - 3-2 OPERATING TEMPERATURE:  $-40^\circ\text{C}$  TO  $+80^\circ\text{C}$ .
  - 3-3 TEMPERATURE LIFE: Subject mated samples at  $105 \pm 2^\circ\text{C}$  for 120 hours per EIA-364-17, method A.
  - 3-4 THERMAL SHOCK: Subject mated samples to 10 cycles between  $-55$  to  $85^\circ\text{C}$  per EIA-364-32C, condition I.
  - 3-5 CYCLIC TEMPERATURE & HUMIDITY: Subject mated samples to 24 cycles between  $25^\circ\text{C}$  at 80% RH to  $65^\circ\text{C}$  at 50% RH per EIA-364-31B.
  - 3-6 VIBRATION: Subject mated samples to 20 to 500 Hz, 3.1 g RMS random excitation of 15 min. in each of the 3 axes and no discontinuity  $> 1$  ms is found per EIA-364-28D, test condition VII, test condition letter D.
  - 3-7 MECHANICAL SHOCK: Subject mated samples to 50% half-sine excitation of 11 ms duration and no discontinuity  $> 1$  ms is found per per EIA-364-27B, condition A.
  - 3-8 MIXED FLOWING GAS: Subject mated samples for 7 days per EIA-364-65, class IIA.
  - 3-9 THERMAL DISTURBANCE: Subject mated samples to 10 cycles between 15 to  $85^\circ\text{C}$ .
4. Please contact foxconn sales representative to verify product details & availability.

⑤	cap	1	THERMOPLASTIC	UL94V-0, IVORY COLOR(IN ORDER TO PICK-UP, TAKE AWAY AFTER ASSEMBLY)
④	CLIP	2	STAINLESS STEEL	Pd PLATING OVER SOLDER PAD AREA
③	BOARD LOCK	2	COPPER ALLOY	PURE TIN OVER ALL
②	CONTACT	52	PHOSPHOR BRONZE	NICKEL UNDER PLATING GOLD FLASH PLATING AT TAIL GOLD PLATING AT CONTACT AREA
①	HOUSING	1	THERMOPLASTIC	UL94V-0, IVORY COLOR

ITEM	DESCRIPTION	Q'TY	METERIAL	TREATMENT
X. ± 0.30	X° ±	UNITS	mm	NAME (INTENDED USE)
.X ± 0.25	.X° ±	MAT'L		MINI PCI EXPRESS CONNECTOR
.XX ± 0.15	.XX° ±	FINISH		PART NO. (INTENDED USE)
.XXX ±	.XXX° ±	Q'TY		AS0B22*-S40*-**
THESE DRAWINGS AND SPECIFICATIONS ARE THE PROPERTY OF HON HAI PRECISION IND. CO., LTD. AND SHALL NOT BE REPRODUCED, COPIED OR USED IN ANY MANNER WITHOUT THE PRIOR WRITTEN CONSENT OF HON HAI PRECISION IND. CO., LTD.				APPD: Herry Yang
				CHKD: Alex Wong
				DR: Liu Fenglan 9/25'08
				TITLE: CUSTOMER DRAWING
				DWG NO.: 317-0100-084
				SCALE SHEET REV.
				N/A 2/7 E

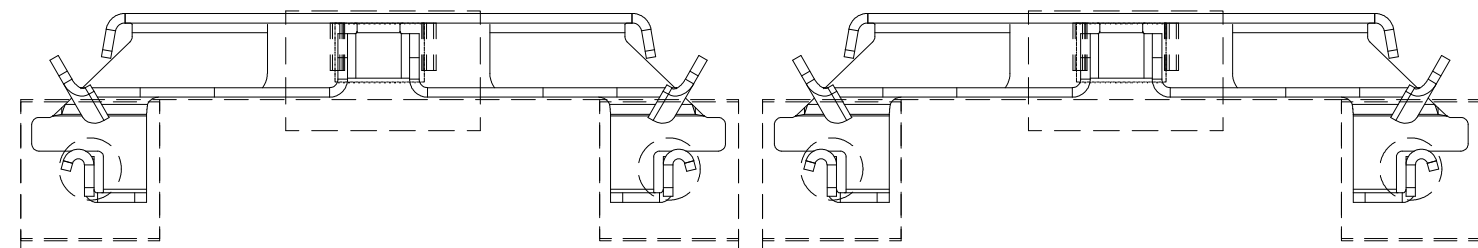
**FOXCONN**

HON HAI PRECISION IND. CO., LTD.  
TAIPEI, TAIWAN, R.O.C.



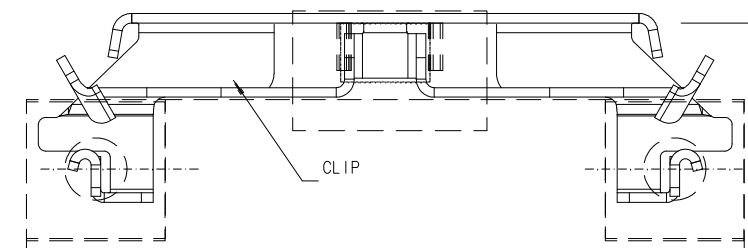
IDEAS GENERATED DRAWING, DO NOT CHANGE BY HAND

REV.	ECN.	NO.	APPD.
------	------	-----	-------



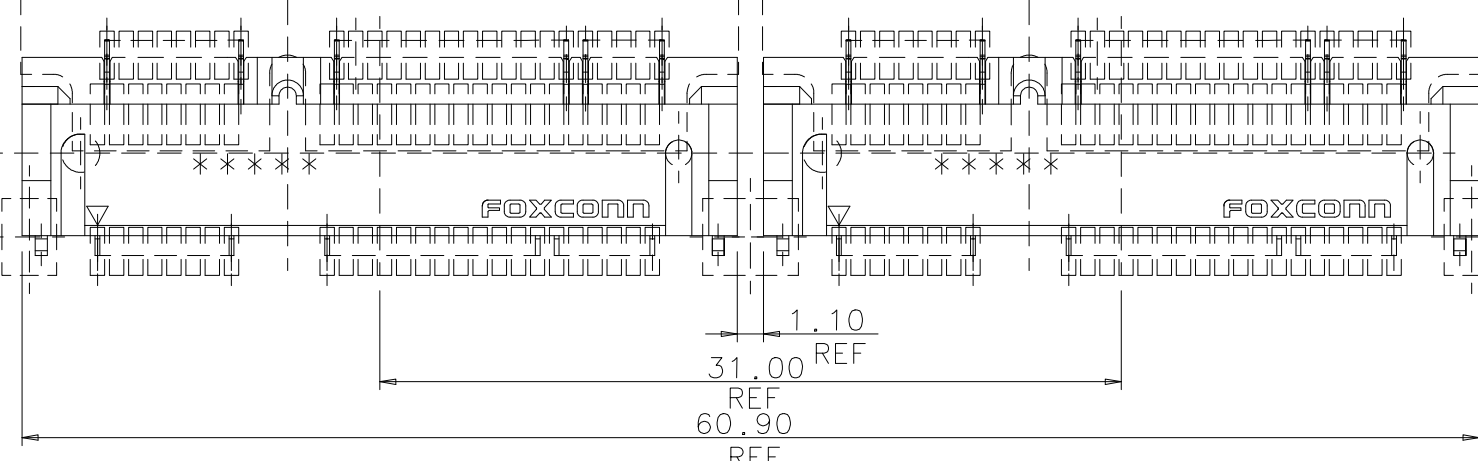
TOP SIDE

TOP SIDE

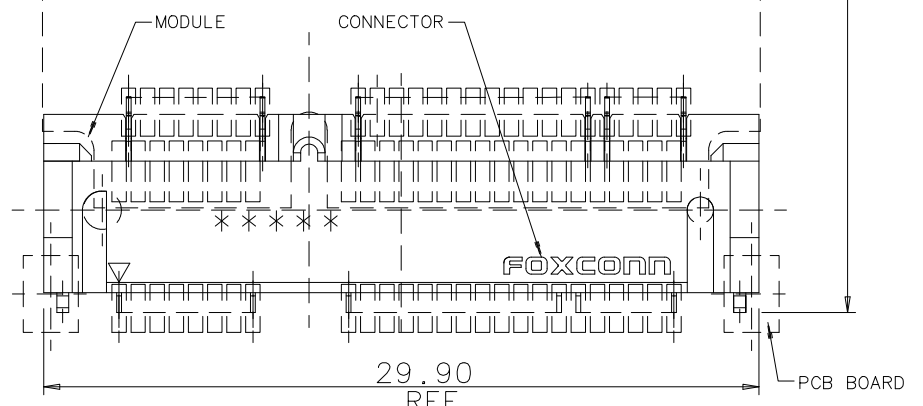


TOP SIDE

58.53 REF



SIDE BY SIDE LAYOUT FOR ASSEMBLY(CONNECTOR+CLIP+MODULE CARD+P.C.B)

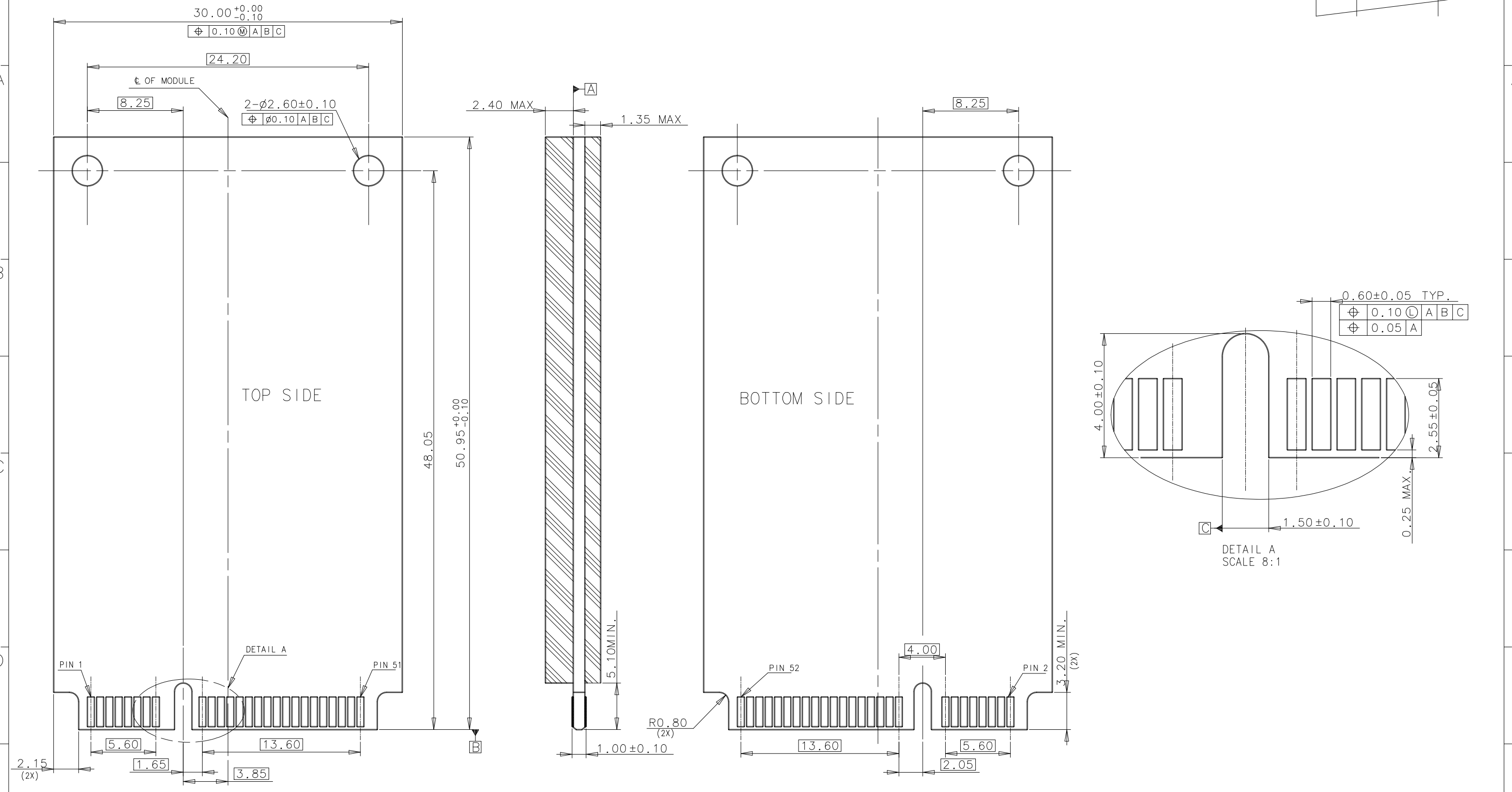


SINGLE LAYOUT FOR ASSEMBLY(CONNECTOR+CLIP+MODULE CARD+P.C.B)

x. ± 0.30	x° ±	UNITS	mm	NAME (INTENDED USE)	<b>FOXCONN</b> HON HAI PRECISION IND. CO., LTD. TAIPEI, TAIWAN, R.O.C.		
.x ± 0.25	.x° ±	MAT'L		MINI PCI EXPRESS CONNECTOR			
.xx ± 0.15	.xx° ±			PART NO. (INTENDED USE)	TITLE:		
.xxx ±	.xxx° ±	FINISH		ASOB22*-S40*-**	CUSTOMER DRAWING		
THESE DRAWINGS AND SPECIFICATIONS ARE THE PROPERTY OF HON HAI PRECISION IND. CO., LTD. AND SHALL NOT BE REPRODUCED, COPIED OR USED IN ANY MANNER WITHOUT THE PRIOR WRITTEN CONSENT OF HON HAI PRECISION IND. CO., LTD.				APPD: Herry Yang	DWG NO.:		
				CHKD: Alex Wong	317-0100-084		
				DR: Liu Fenglan 9/25'08			
					SCALE	SHEET	REV.
					N/A	3/7	E

IDEAS GENERATED DRAWING, DO NOT CHANGE BY HAND

REV.	ECN.	NO.	APPD.

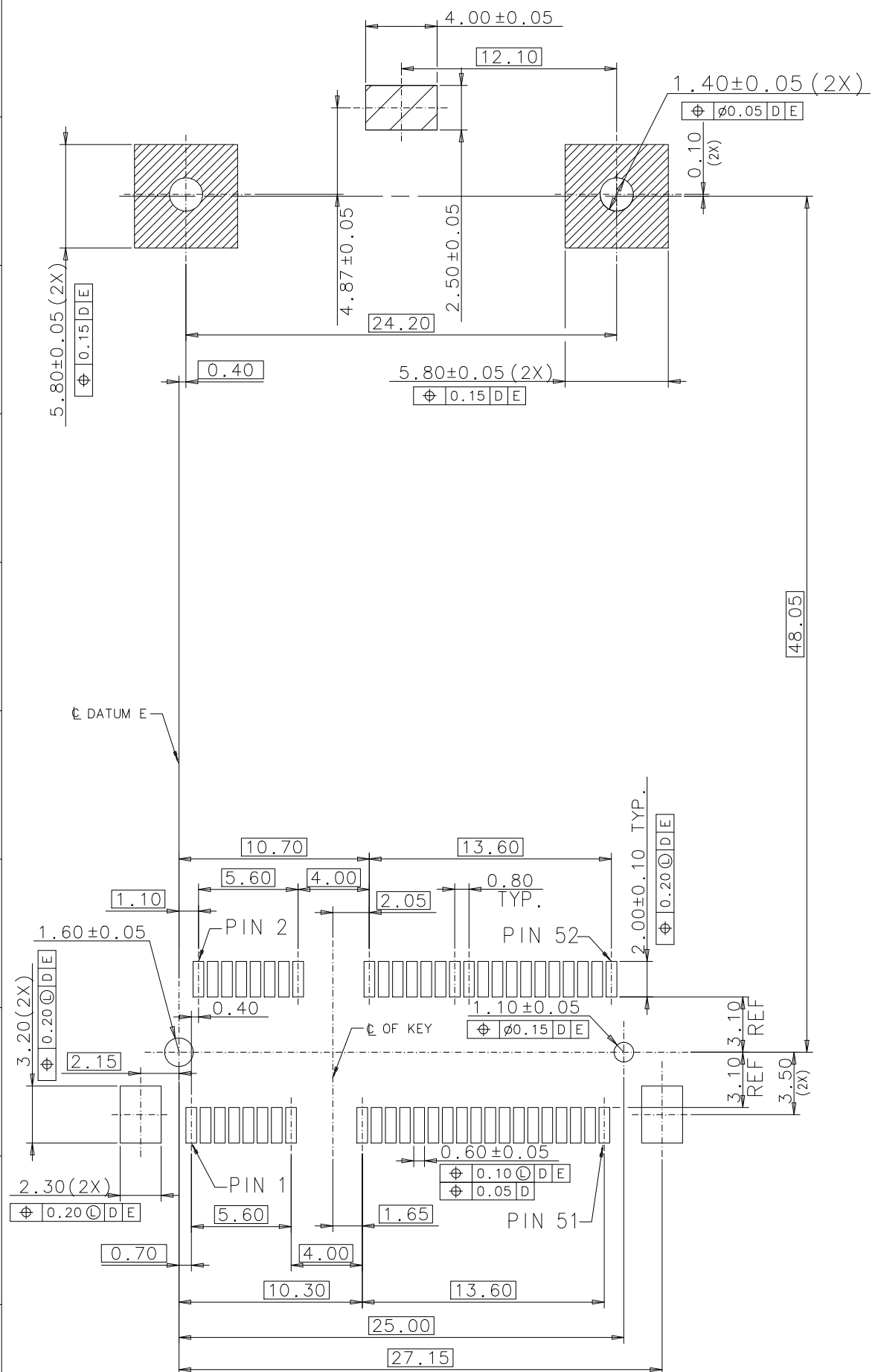


MINI PCI EXPRESS MODULE BOARD LAYOUT

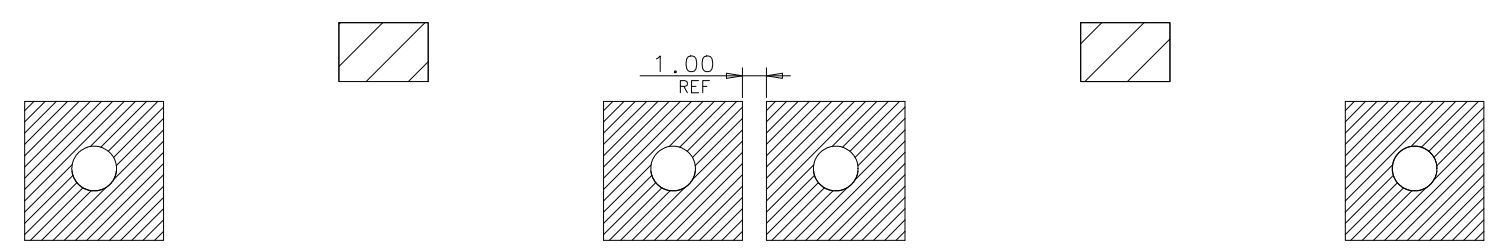
x. ± 0.30	x° ±	UNITS mm	NAME (INTENDED USE)	<b>FOXCONN</b> HON HAI PRECISION IND. CO., LTD. TAIPEI, TAIWAN, R.O.C.
.x ± 0.25	.x° ±		MAT'L	
.xx ± 0.15	.xx° ±	FINISH	PART NO. (INTENDED USE)	TITLE:
.xxx ±	.xxx° ±		ASOB22*-S40*-**	CUSTOMER DRAWING
THESE DRAWINGS AND SPECIFICATIONS ARE THE PROPERTY OF HON HAI PRECISION IND. CO., LTD. AND SHALL NOT BE REPRODUCED, COPIED OR USED IN ANY MANNER WITHOUT THE PRIOR WRITTEN CONSENT OF HON HAI PRECISION IND. CO., LTD.			APPD: Herry Yang	DWG NO.:
			CHKD: Alex Wong	317-0100-084
			DR: Liu Fenglan 9/25'08	SCALE SHEET REV.
			N/A	4/7
				E

IDEAS GENERATED DRAWING, DO NOT CHANGE BY HAND

REV.	ECN.	NO.	APPD.

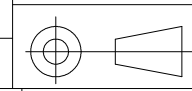


Datum D is the top surface of PCB  
RECOMMENDED P.C.B. BOARD LAYOUT (WITH CLIP)

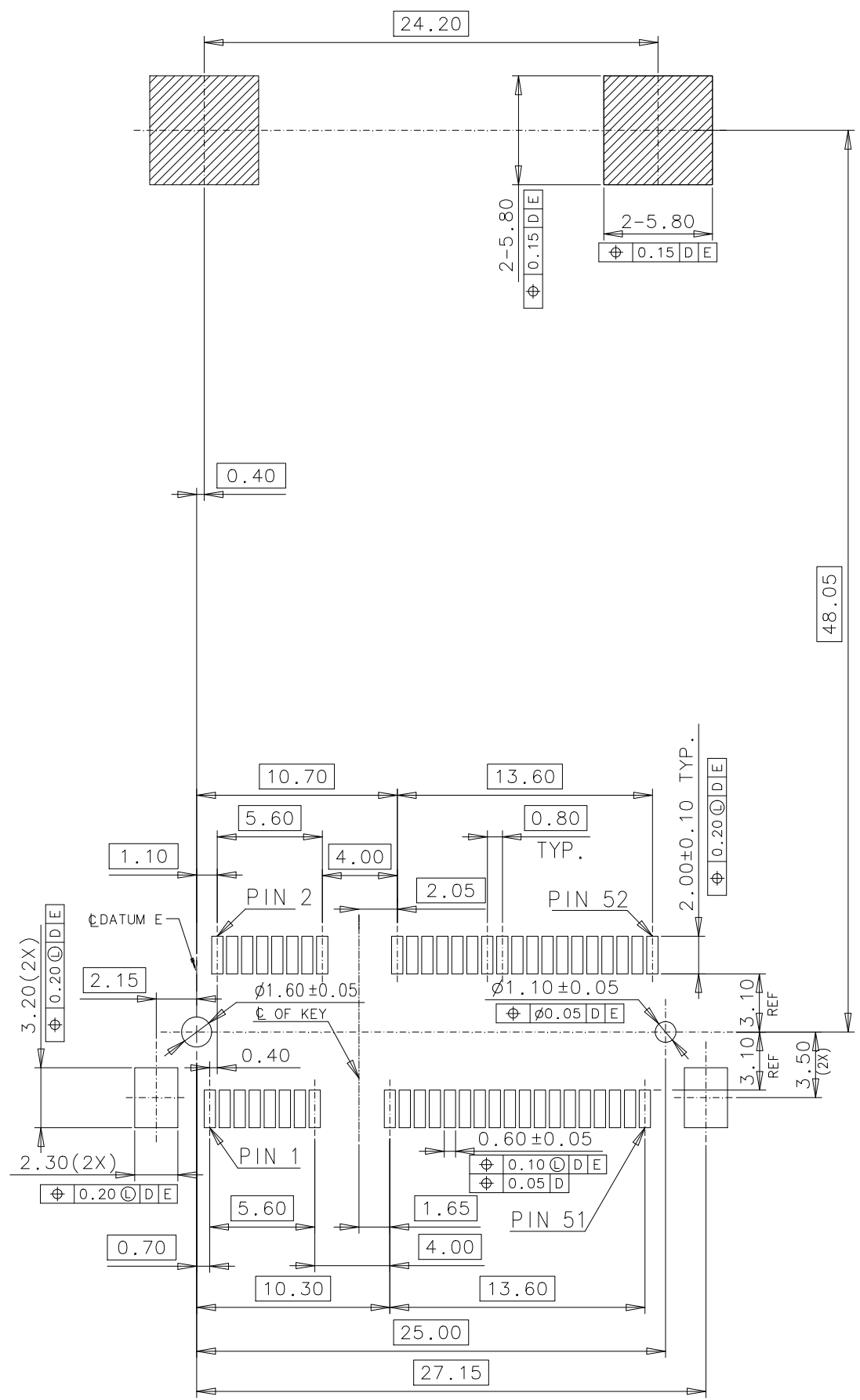


RECOMMENDED P.C.B. BOARD LAYOUT  
(SIDE BY SIDE)

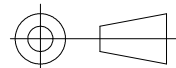
x. ± 0.30	x° ±	UNITS	mm	NAME (INTENDED USE)	<b>FOXCONN</b> HON HAI PRECISION IND. CO., LTD. TAIPEI, TAIWAN, R.O.C.
.x ± 0.25	.x° ±	MAT'L		MINI PCI EXPRESS CONNECTOR	
.xx ± 0.15	.xx° ±			PART NO. (INTENDED USE)	TITLE:
.xxx ±	.xxx° ±	FINISH		AS0B22*-S40*-**	CUSTOMER DRAWING
THESE DRAWINGS AND SPECIFICATIONS ARE THE PROPERTY OF HON HAI PRECISION IND. CO., LTD. AND SHALL NOT BE REPRODUCED, COPIED OR USED IN ANY MANNER WITHOUT THE PRIOR WRITTEN CONSENT OF HON HAI PRECISION IND. CO., LTD.				APPD: Herry Yang	DWG NO.:
				CHKD: Alex Wong	317-0100-084
				DR: Liu Fenglan 9/25'08	SCALE
					SHEET
					REV.
					N/A
					5/7
					E



REV.	ECN.	NO.	APPD.

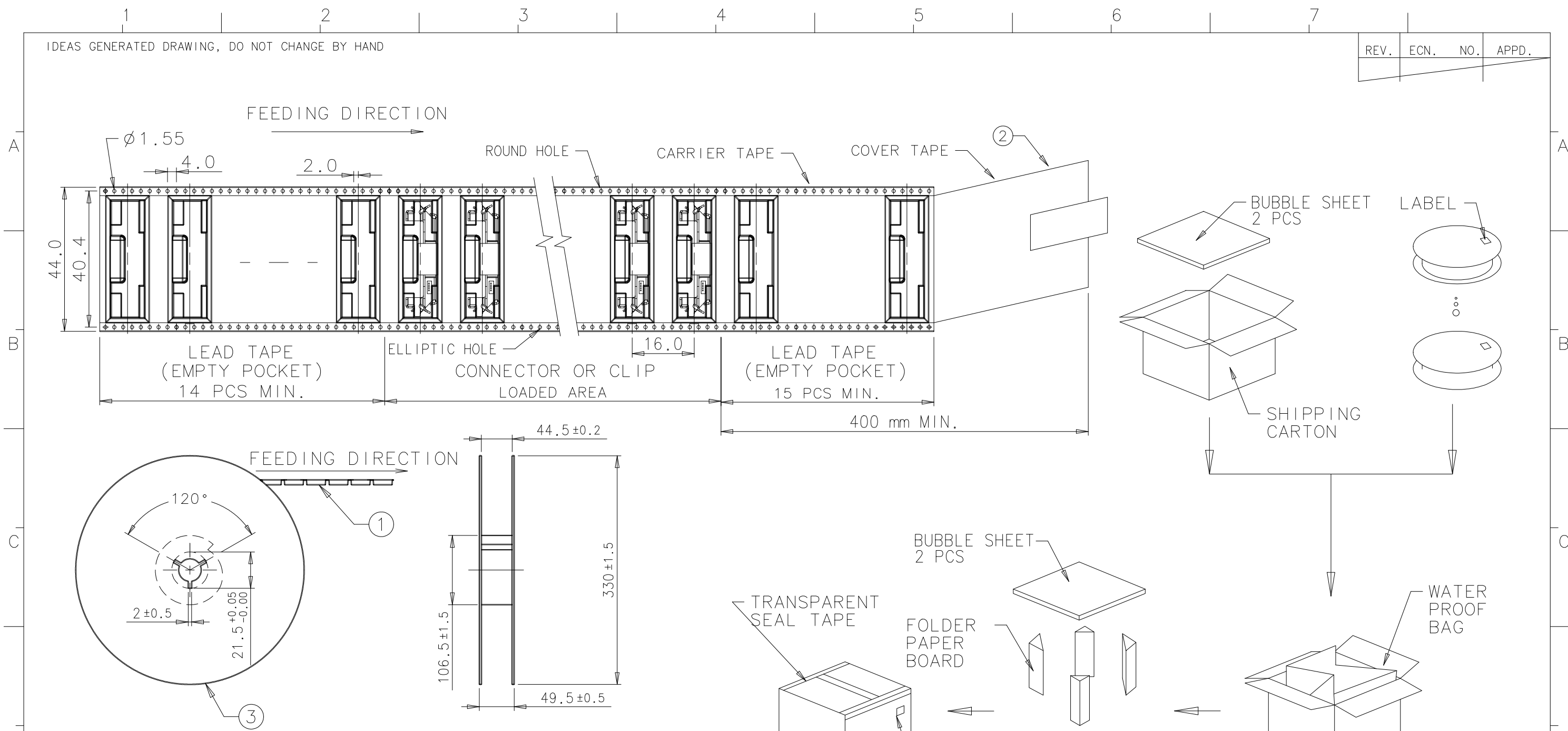


Datum D is the top surface of PCB  
RECOMMENDED P.C.B. BOARD LAYOUT(WITH NUT)

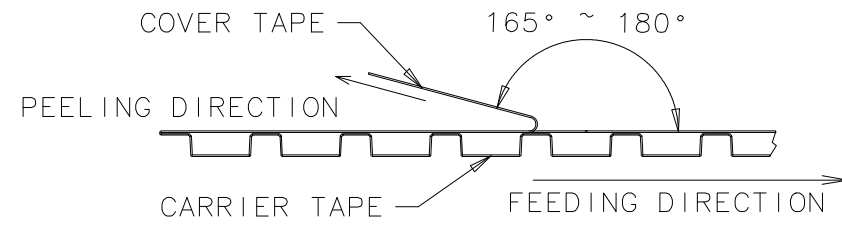
$x. \pm 0.15$	$x^\circ \pm$	UNITS	mm	NAME (INTENDED USE)	<b>FOXCONN</b> HON HAI PRECISION IND. CO., LTD. TAIPEI, TAIWAN, R.O.C.		
$.x \pm 0.10$	$.x^\circ \pm$	MAT'L		MINI PCI EXPRESS CONNECTOR			
$.xx \pm 0.05$	$.xx^\circ \pm$	FINISH		PART NO. (INTENDED USE)	TITLE:		
$.xxx \pm$	$.xxx^\circ \pm$	Q'TY		ASOB22*-S40*-**	CUSTOMER DRAWING		
THESE DRAWINGS AND SPECIFICATIONS ARE THE PROPERTY OF HON HAI PRECISION IND. CO., LTD. AND SHALL NOT BE REPRODUCED, COPIED OR USED IN ANY MANNER WITHOUT THE PRIOR WRITTEN CONSENT OF HON HAI PRECISION IND. CO., LTD.				APPD: Herry Yang	DWG NO.:		
				CHKD: Alex Wong	317-0100-084		
				DR: Liu Fenglan 9/25'08			
					SCALE	SHEET	REV.
				N/A	6/7	E	

IDEAS GENERATED DRAWING, DO NOT CHANGE BY HAND

REV.	ECN.	NO.	APPD.



- NOTES:
1. 10 POCKETS HOLE PITCH CUMULATIVE TOLERANCE  $\pm 0.20\text{mm}$ .
  2. COVER TAPE PEELING STRENGTH : 0.15 Kgf MAX. AT 300mm/min.



3. PACKING CAPACITY :

PART No.	PCS / REEL	REEL / BOX	PCS / BOX
ASOB22*-S40N-7F	600	5	3000
ASOB22*-S40K-7F	500	5	2500

③	REEL	POLYSTYRENE
②	COVER TAPE	POLYSTER
①	CARRIER TAPE	POLYSTYRENE
ITEM	DESCRIPTION	MATERIAL

x.± 0.15	x°±	UNITS	mm	NAME (INTENDED USE)	<b>FOXCONN</b> HON HAI PRECISION IND. CO., LTD. TAIPEI, TAIWAN, R.O.C.	
.x± 0.10	.x°±	MAT'L		MINI PCI EXPRESS CONNECTOR		
.xx± 0.05	.xx°±			PART NO. (INTENDED USE)	TITLE:	
.xxx±	.xxx°	FINISH		ASOB22*-S40*-**	CUSTOMER DRAWING	
THESE DRAWINGS AND SPECIFICATIONS ARE THE PROPERTY OF HON HAI PRECISION IND. CO., LTD. AND SHALL NOT BE REPRODUCED, COPIED OR USED IN ANY MANNER WITHOUT THE PRIOR WRITTEN CONSENT OF HON HAI PRECISION IND. CO., LTD.				APPD: Herry Yang	DWG NO.:	
				CHKD: Alex Wong	317-0100-084	
				DR: Liu Fenglan 9/25'08		
				SCALE	SHEET	REV.
				N/A	7/7	E