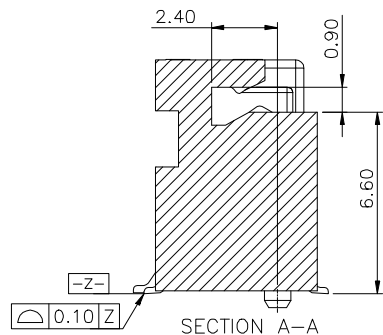
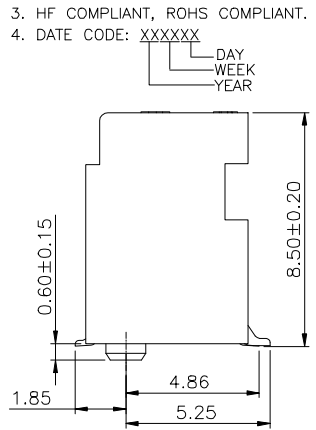


REV.	ECR/N NO./DESCRIPTION	DATE	DRAWN	CHECKED	APPROVE
1	SN14190	01/04'15	SAM	VITO	BARNEY

- NOTES:
- MATERIAL SPECIFICATION:
 - 1-1. HOUSING: LCP+40%GF,UL-94V0,BLACK.
 - 1-2. CONTACT: COPPER ALLOY C1065.
 - 1-3. SMT TAB: S50C.
 - PLATING SPECIFICATION:
 - 2-1. CONTACT:
 - 50u" MIN. NICKEL UNDER PLATING OVER ALL.
 - G/F" PLATING ON SOLDER AREA.
 - GOLD PLATING ON CONTACT AREA SEE TABLE.
 - 2-2. SMT TAB:
 - 50u" MIN. NICKEL UNDER PLATING OVER ALL.
 - 80u" MIN. MATTE TIN PLATING ON SOLDER AREA.
 - HF COMPLIANT, ROHS COMPLIANT.
 - DATE CODE: XXXXXX
 - DAY
 - WEEK
 - YEAR
 - MECHANICAL PERFORMANCE:
 - 5-1. DURABILITY: SEE TABLE.
 - ELECTRICAL PERFORMANCE:
 - 6-1. CURRENT: 0.5A PER PIN.
 - 6-2. LLCR: INITIAL 55mΩ MAX. ; FINAL ΔLLCR=20mΩ MAX..
 - IR REFLOW:
 - THE TEMPERATURE SHALL BE 260±5°C MAINTAINING 10±1 SECONDS.
 - PRODUCT NUMBER NOTE

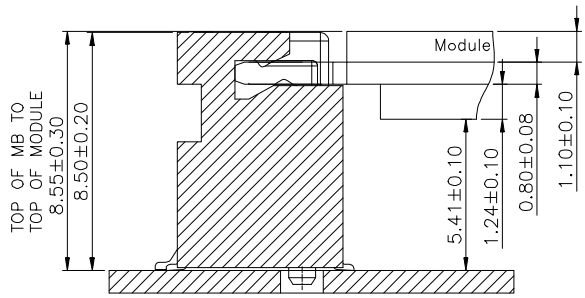
A	P	C	I	X	X	X	X	X	X	X	X
PACKING TYPE			PRODUCT SERIAL NUMBER			P:HF COMPLIANT			TYPE SERIAL NUMBER		
PRODUCT TYPE			FINISHED PRODUCT								



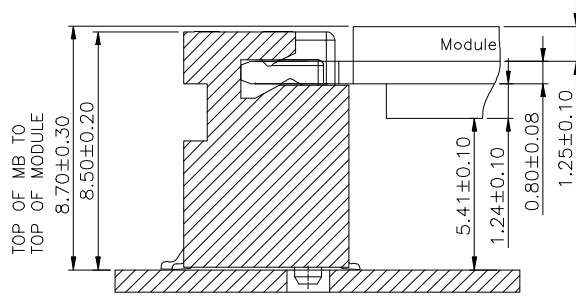
KEY NO.	PART NO.	CONTACT PLATING	DURABILITY
B-KEY	APCI0161-P004A	30u" MIN. GOLD	60 CYCLES
	APCI0161-P003A	15u" MIN. GOLD	25 CYCLES
	APCI0161-P002A	10u" MIN. GOLD	25 CYCLES
	APCI0161-P001A	1u" MIN. GOLD	25 CYCLES

GENERAL TOLERANCES UNLESS SPECIFIED		PART NO.	深圳市连欣科技有限公司
X± 0.35	X°± 3°	SEE TABLE	
.XX± 0.25	.X°± 2°	APPROVED BY	TITLE
.XXX± 0.15	.XX°± 1°	Barney	0.5 PITCH M.2 8.5H TOP MOUNT-DOUBLE SIDED
CUSTOMER DRAWING		CHECKED BY	DWG NO.
		Vito	AP-APCI0161-X
SIZE	UNITS	DRAWN BY	SHEET SCALE REV
A4	MM[INCH]	Sam	

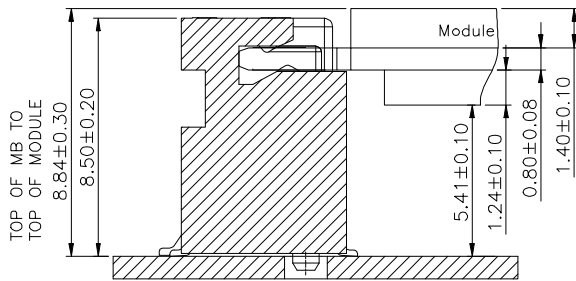
Assembly stack height schematic diagram



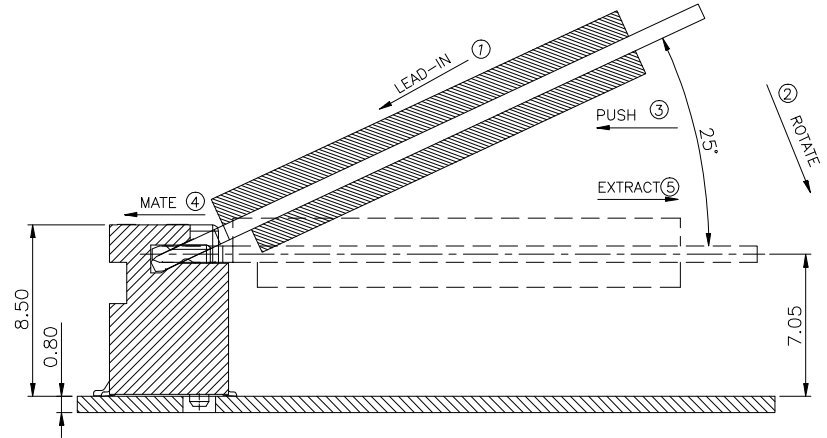
Stack-up Top Mount Double Sided Module for 1.20 max top-side component height



Stack-up Top Mount Double Sided Module for 1.35 max top-side component height



Stack-up Top Mount Double Sided Module for 1.35 max top-side component height

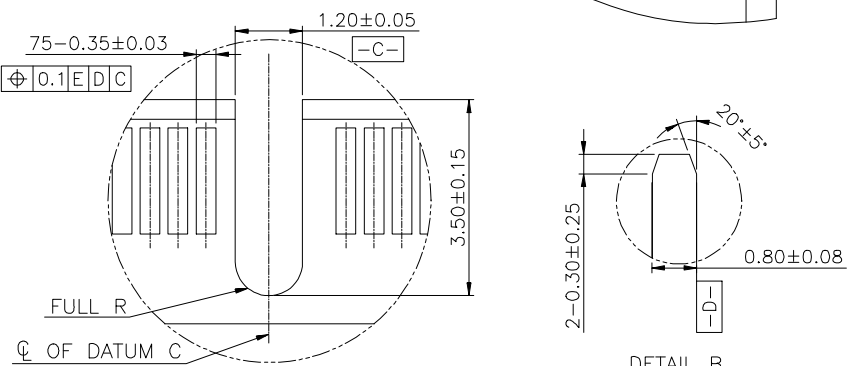
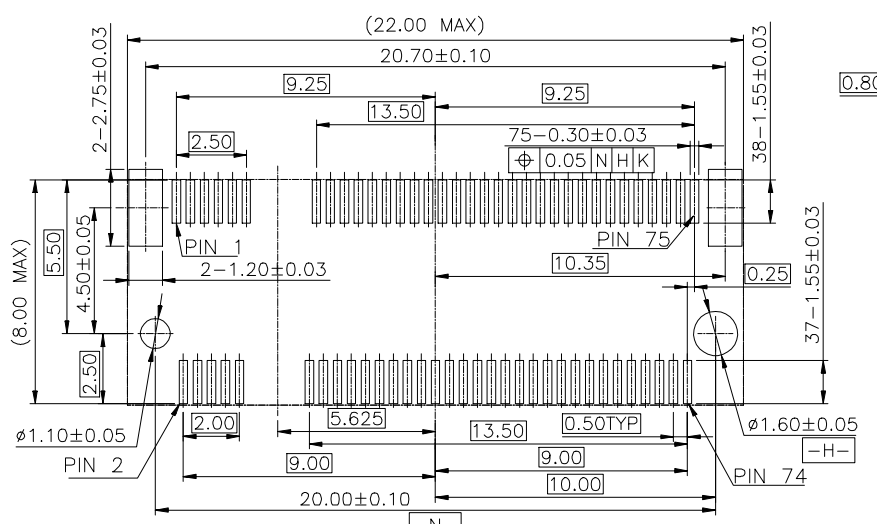
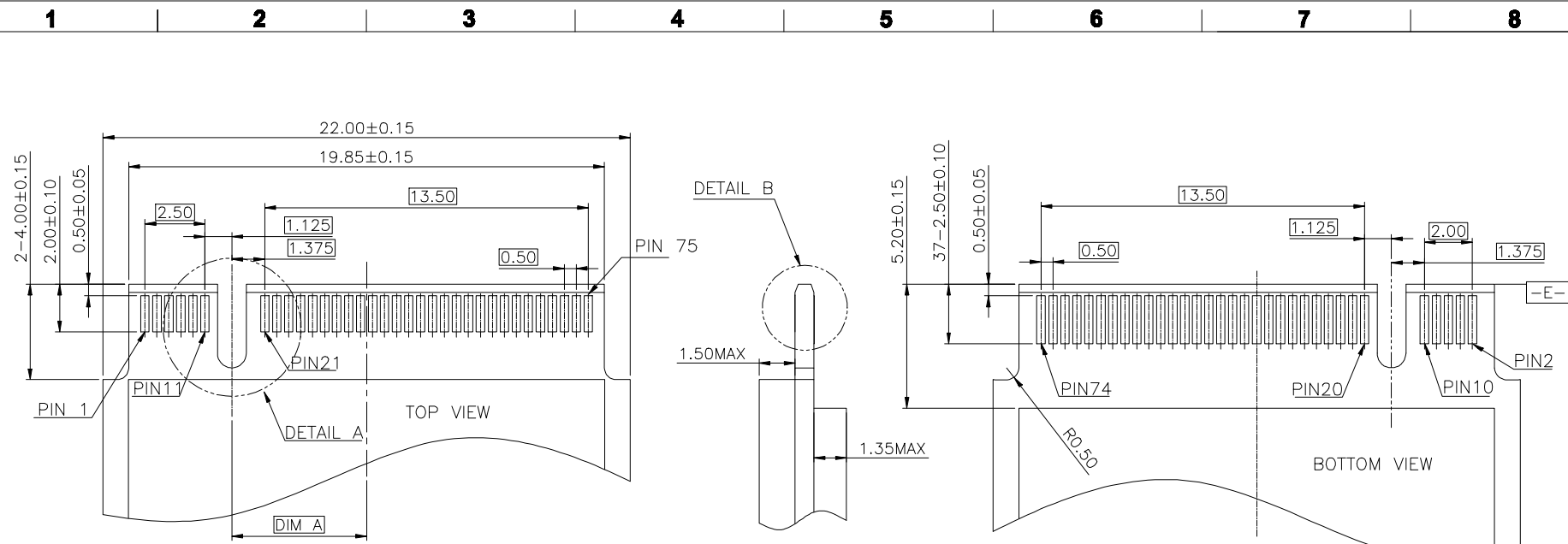


HOW TO MATE AND EXTRACT

MATE: ① → ④
EXTRACT: ⑤

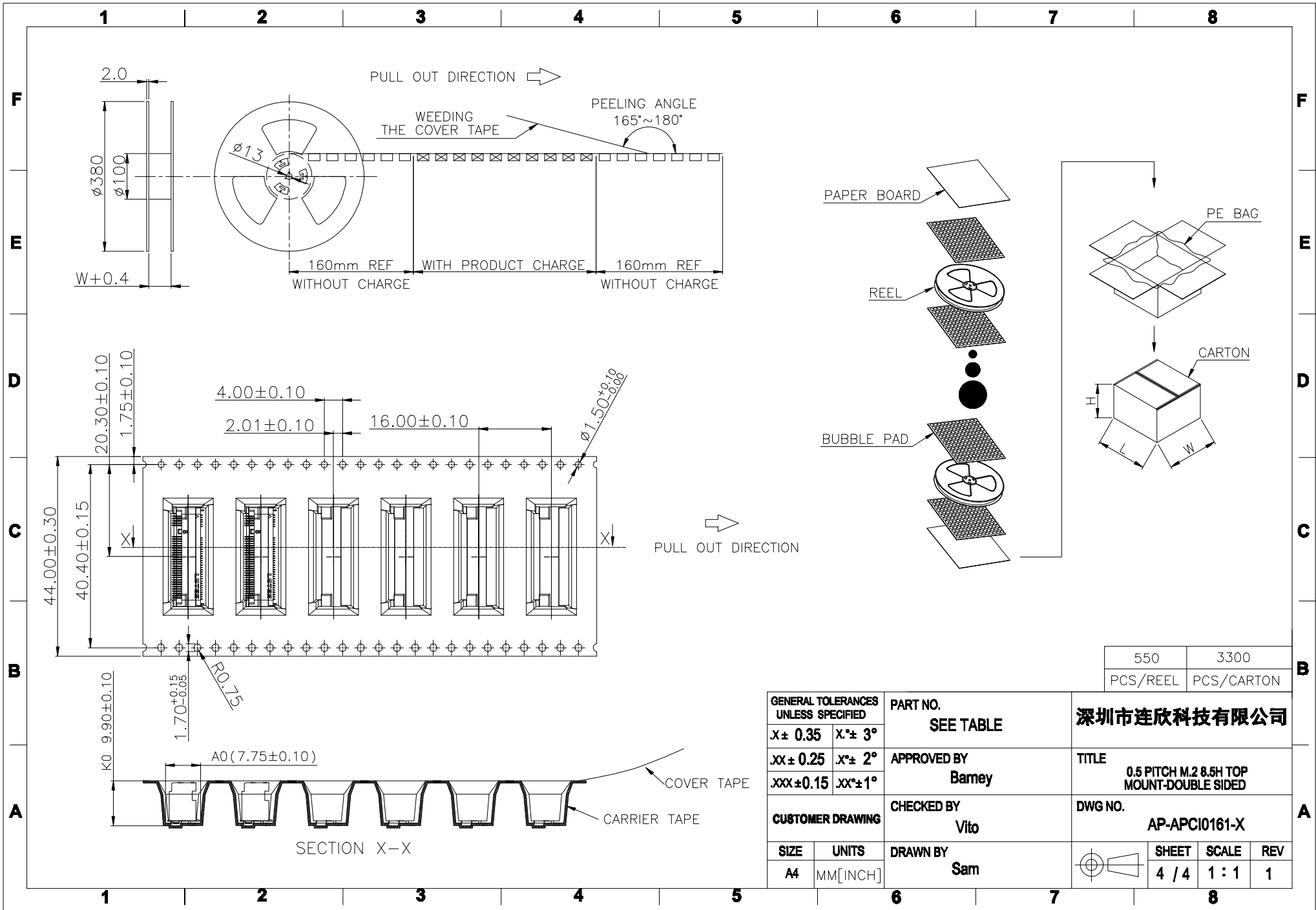
NOTE: Mating force will generate from step 3 to step 4.

GENERAL TOLERANCES UNLESS SPECIFIED		PART NO. SEE TABLE	深圳市连欣科技有限公司		
$X \pm 0.35$	$X^\circ \pm 3^\circ$	APPROVED BY Barney	TITLE 0.5 PITCH M.2 8.5H TOP MOUNT-DOUBLE SIDED		
$.XX \pm 0.25$	$.X^\circ \pm 2^\circ$	CHECKED BY Vito	DWG NO. AP-APCI0161-X		
$.XXX \pm 0.15$	$.XX^\circ \pm 1^\circ$	DRAWN BY Sam		SHEET	SCALE
CUSTOMER DRAWING				2 / 4	4 : 1
SIZE A4	UNITS MM [INCH]			REV 1	

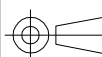


RECOMMENDED PCB LAYOUT (TOP VIEW)
 DEFAULT TOLERANCE ±0.05MM

GENERAL TOLERANCES UNLESS SPECIFIED		PART NO. SEE TABLE	深圳市连欣科技有限公司		
X ± 0.35	X° ± 3°				
XX ± 0.25	X° ± 2°	APPROVED BY Bamey	TITLE 0.5 PITCH M.2 8.5H TOP MOUNT-DOUBLE SIDED		
.XXX ± 0.15	.XX° ± 1°				
CUSTOMER DRAWING		CHECKED BY Vito	DWG NO. AP-APCI0161-X		
SIZE	UNITS				
A4	MM [INCH]				



550	3300
PCS/REEL	PCS/CARTON

GENERAL TOLERANCES UNLESS SPECIFIED		PART NO. SEE TABLE	深圳市连欣科技有限公司								
$X \pm 0.35$	$X^{\circ} \pm 3^{\circ}$					TITLE 0.5 PITCH M.2 8.5H TOP MOUNT-DOUBLE SIDED					
$.XX \pm 0.25$	$X^{\circ} \pm 2^{\circ}$										
$.XXX \pm 0.15$	$.XX^{\circ} \pm 1^{\circ}$	APPROVED BY Bamey	DWG NO. AP-APCI0161-X								
CUSTOMER DRAWING		CHECKED BY Vito									
SIZE A4	UNITS MM[INCH]	DRAWN BY Sam	 <table border="1"> <tr> <td>SHEET</td> <td>SCALE</td> <td>REV</td> </tr> <tr> <td>4 / 4</td> <td>1 : 1</td> <td>1</td> </tr> </table>			SHEET	SCALE	REV	4 / 4	1 : 1	1
SHEET	SCALE	REV									
4 / 4	1 : 1	1									