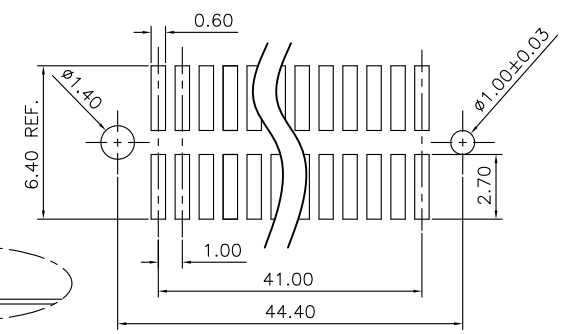
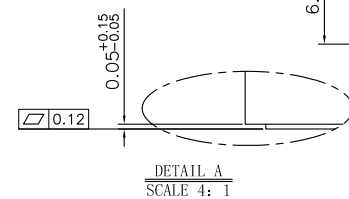
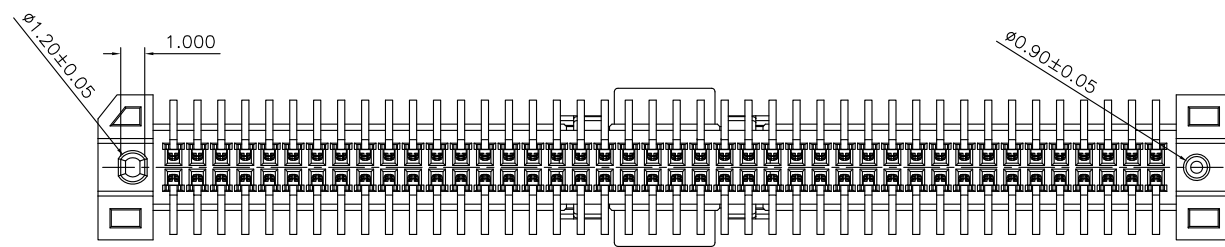
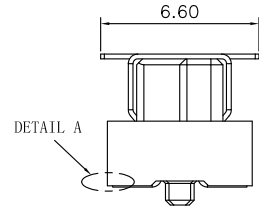
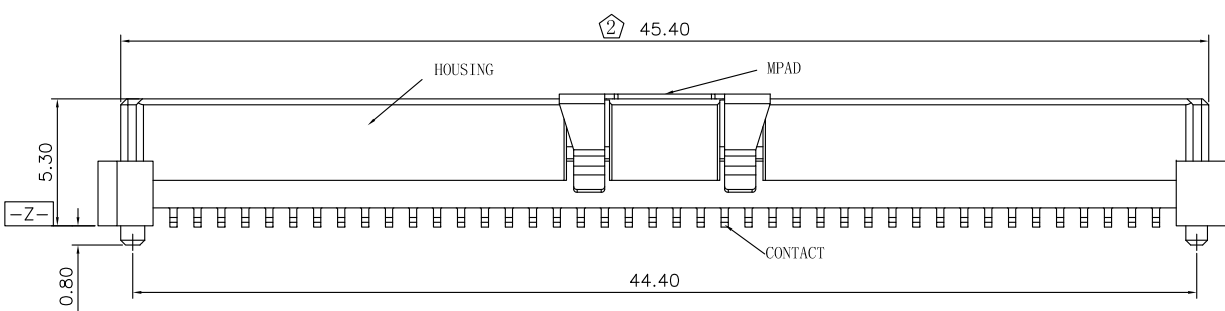
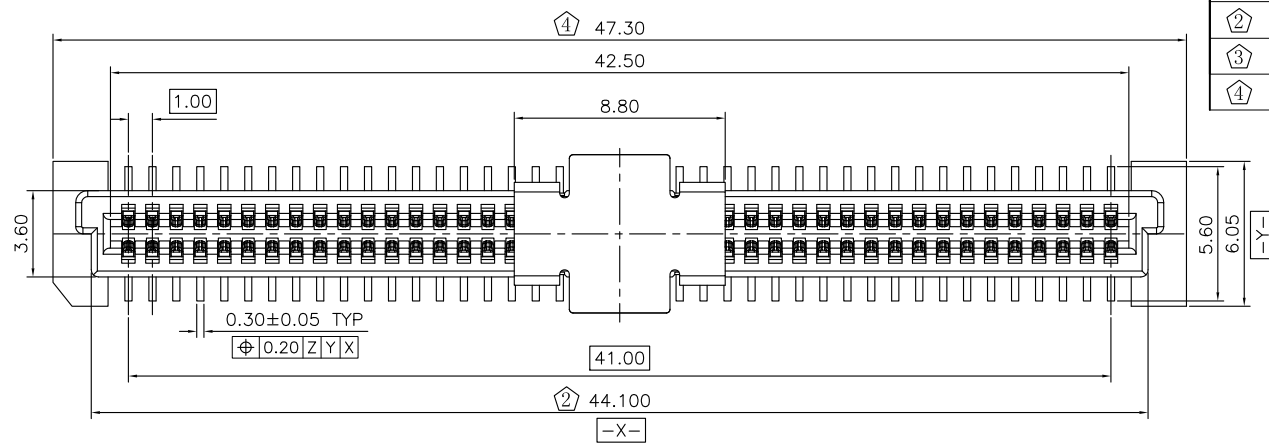
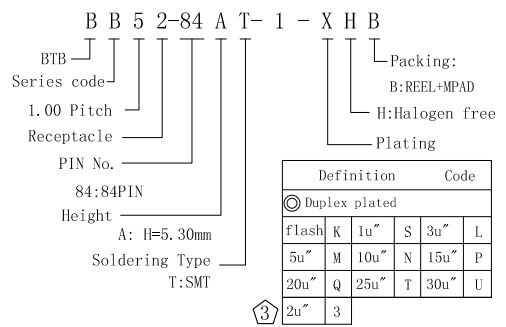


REV.	ECN Number	Description	Drawn
1	CS18120392	RELEASE	XPG_2018.12.27
②	E19010008	Modify Interface (Mated)	XPG_2019.01.03
③	E19010026	Add plating code:3	SJ_2019.01.17
④	E19010039	Modify Shape	XPG_2019.01.28

- NOTES: (UNLESS OTHERWISE SPECIFIED)
- DIMENSION SHALL BE INTERPRETED PER ANSI Y14.5M-1994.
 - MATERIAL:
HOUSING MATERIAL: HIGH TEMPERATURE PLASTICS.
CONTACT MATERIAL: COPPER ALLOY,
MPAD MATERIAL: STAINLESS STEEL.
 - ELECTRICAL SPECIFICATION:
CONTACT RESISTANCE: 30 m ohms Max(Initial).
INSULATION RESISTANCE: 1000M ohms Min.
CURRENT RATING: 1.0A.
DIELECTRIC WITHSTANDING VOLTAGE: 250V AC
 - MECHANICAL SPECIFICATION:
DURABILITY:50 CYCLES.
INSERTION FORCE: 120gf Max. Per Pin.
WITHDRAWAL FORCE: 10gf Min. Per Pin.
 - PRODUCT NUMBER MATRIX:



RECOMMENDED PCB LAYOUT
TOLERANCE ±0.05



TOLERANCE UNLESS OTHERWISE SPECIFIED			
X.X	±0.30	X.°	±3°
X.XX	±0.20	X.X°	±2°
X.XXX	±0.10	X.XX°	±1°

SCALE	1:1
UNIT	mm
SIZE	A4

ORIGINAL DRAWN:	XPG	DATE	2019.01.28
CHECK:	Xu peiguang	DATE	2019.01.28
APPROVE:	Ady zhou	DATE	2019.01.28

DWG. NO.	600-0000-0431
PARTS NO. (INTENDED USE)	BB52-84AT-1-XHB

TITLE	BB52-84AT CUSTOMER DRAWING
-------	-------------------------------

REV.	4
SHEET	1/1