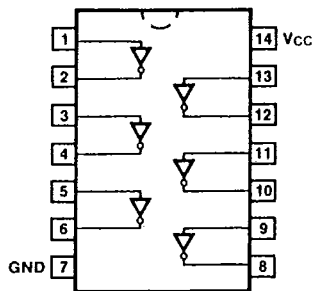


54/7404
54H/74H04
54S/74S04
54S/74S04A
54LS/74LS04
 HEX INVERTER

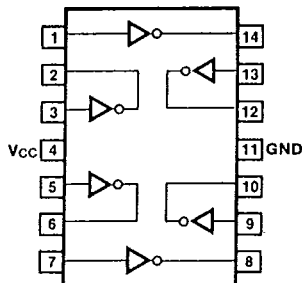
CONNECTION DIAGRAMS
PINOUT A



ORDERING CODE: See Section 9

PKGS	PIN OUT	COMMERCIAL GRADE	MILITARY GRADE	PKG TYPE
		V _{CC} = +5.0 V ±5%, T _A = 0°C to +70°C	V _{CC} = +5.0 V ±10%, T _A = -55°C to +125°C	
Plastic DIP (P)	A	7404PC, 74H04PC 74S04PC, 74S04APC 74LS04PC		9A
Ceramic DIP (D)	A	7404DC, 74H04DC 74S04DC, 74S04ADC 74LS04DC	5404DM, 54H04DM 54S04DM, 54S04ADM 54LS04DM	6A
Flatpak (F)	A	74S04FC, 74S04AFC 74LS04FC	54S04FM, 54S04AFM 54LS04FM	3I
	B	7404FC, 74H04FC	5404FM, 54H04FM	

PINOUT B



INPUT LOADING/FAN-OUT: See Section 3 for U.L. definitions

PINS	54/74 (U.L.) HIGH/LOW	54/74H (U.L.) HIGH/LOW	54/74S (U.L.) HIGH/LOW	54/74LS (U.L.) HIGH/LOW
Inputs	1.0/1.0	1.25/1.25	1.25/1.25	0.5/0.25
Outputs	20/10	12.5/12.5	25/12.5	10/5.0 (2.5)

DC AND AC CHARACTERISTICS: See Section 3*

SYMBOL	PARAMETER	54/74		54/74H		54/74S		54/74LS		UNITS	CONDITIONS
		Min	Max	Min	Max	Min	Max	Min	Max		
I _{CC} H	Power Supply		12		26		24		2.4	mA	V _{IN} = Gnd V _{CC} = Max
I _{CC} L	Current		33		58		54		6.6		V _{IN} = Open
t _{PLH} t _{PHL}	Propagation Delay		22 15		10 10		2.0 2.0		4.5 5.0	ns	Fig. 3-1, 3-4
t _{PLH} t _{PHL}	Propagation Delay (54/74S04A only)						1.0 1.0		3.5 4.0		

*DC limits apply over operating temperature range; AC limits apply at T_A = +25°C and V_{CC} = +5.0 V.

4