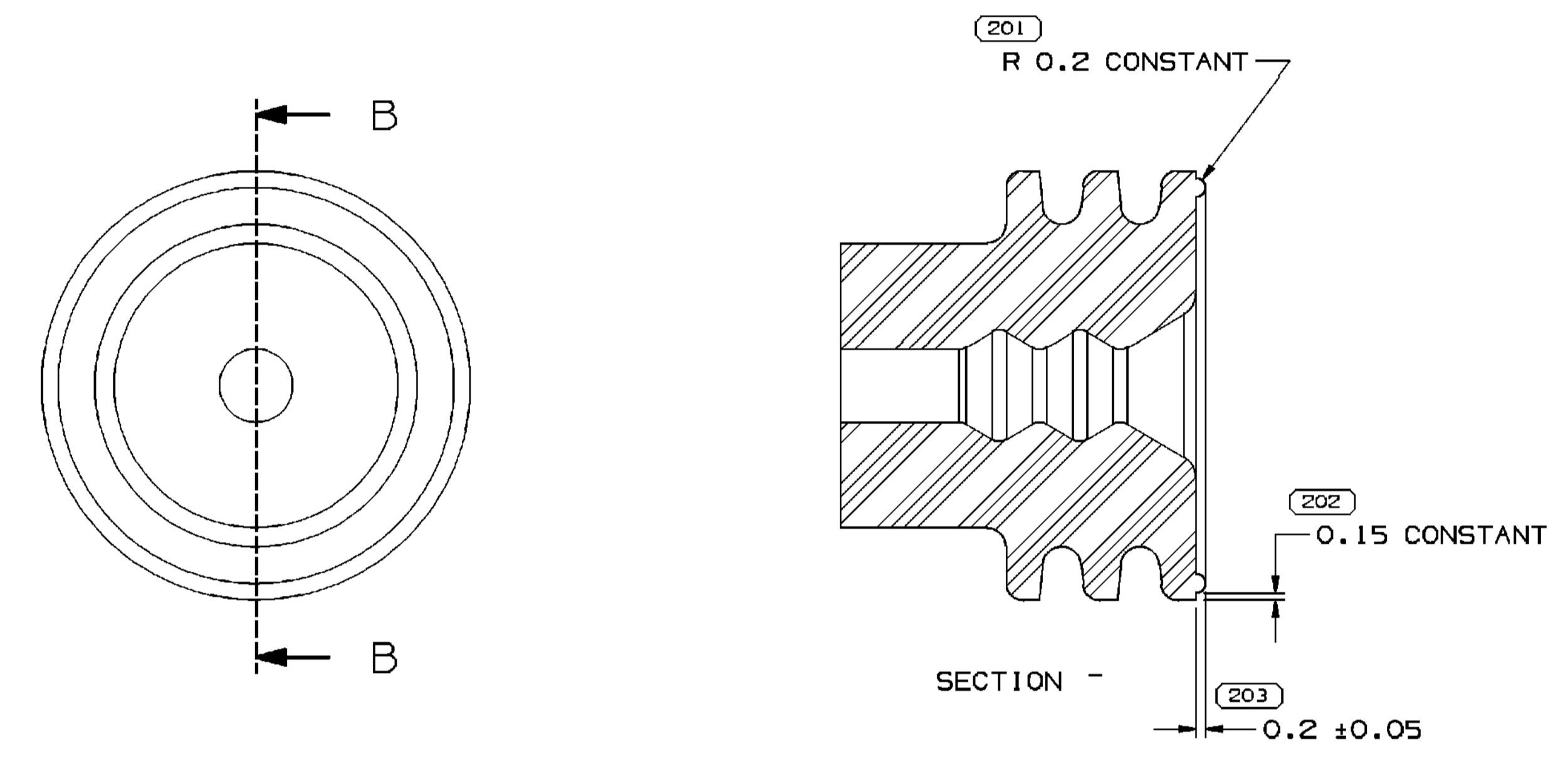
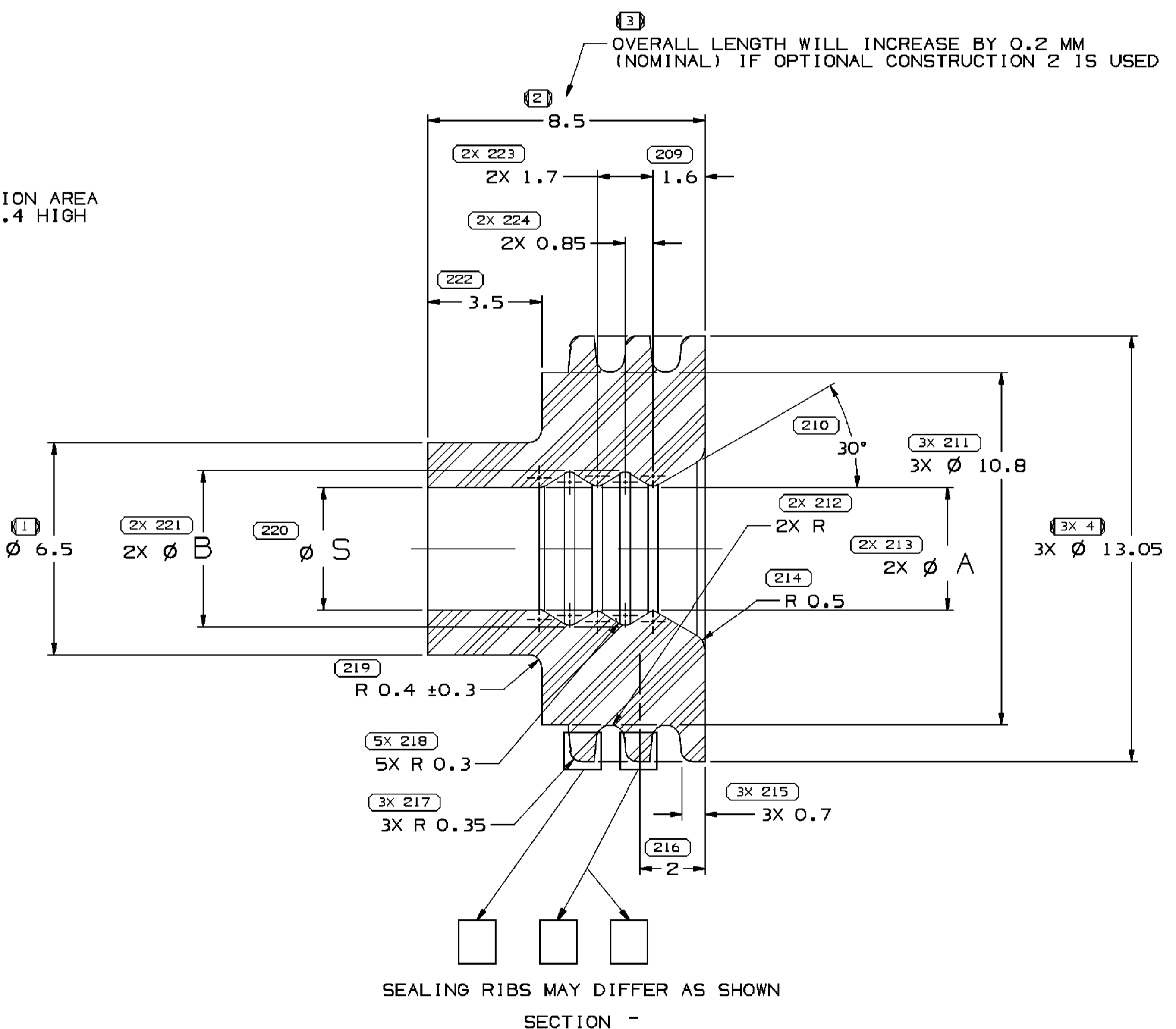
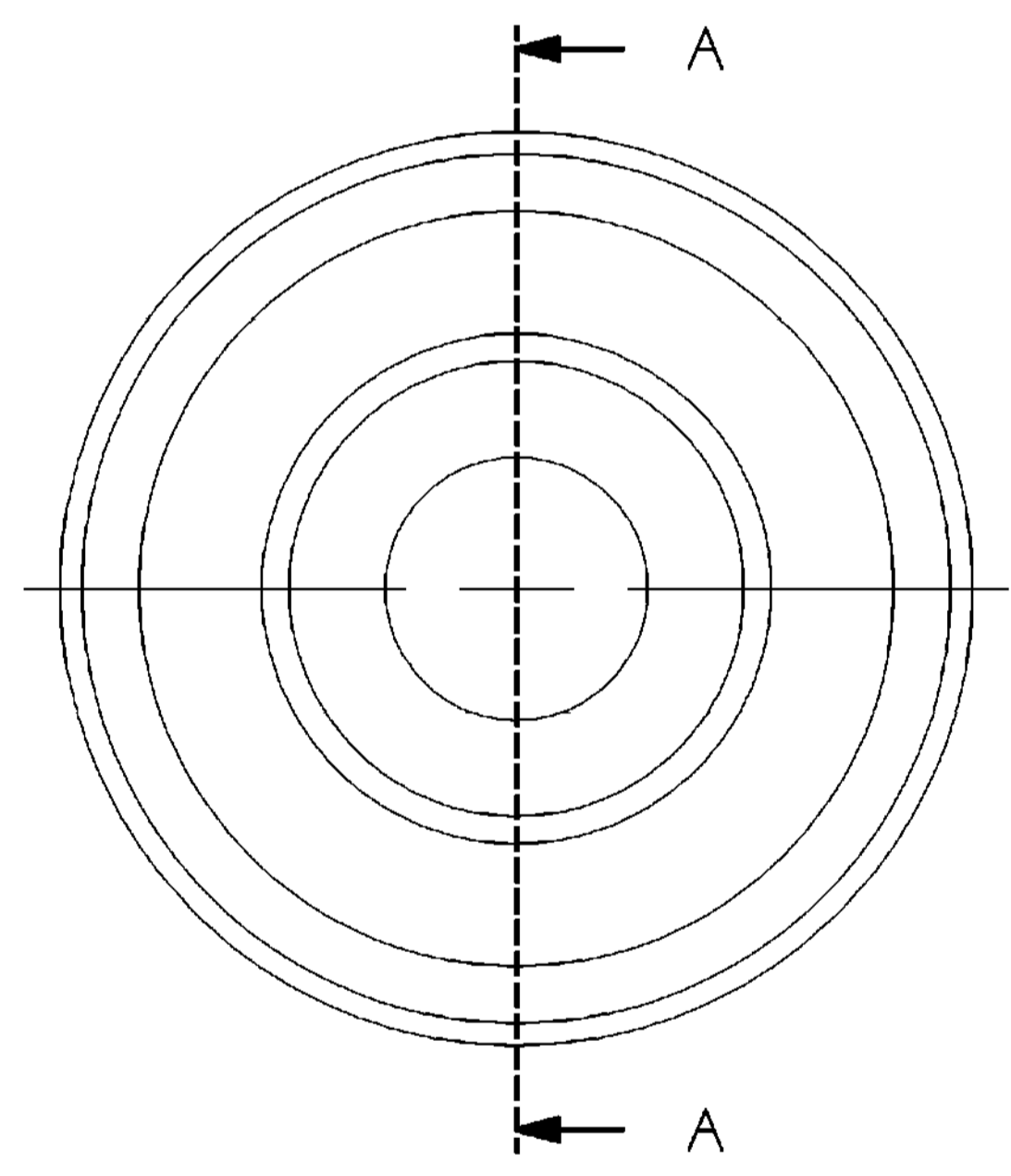
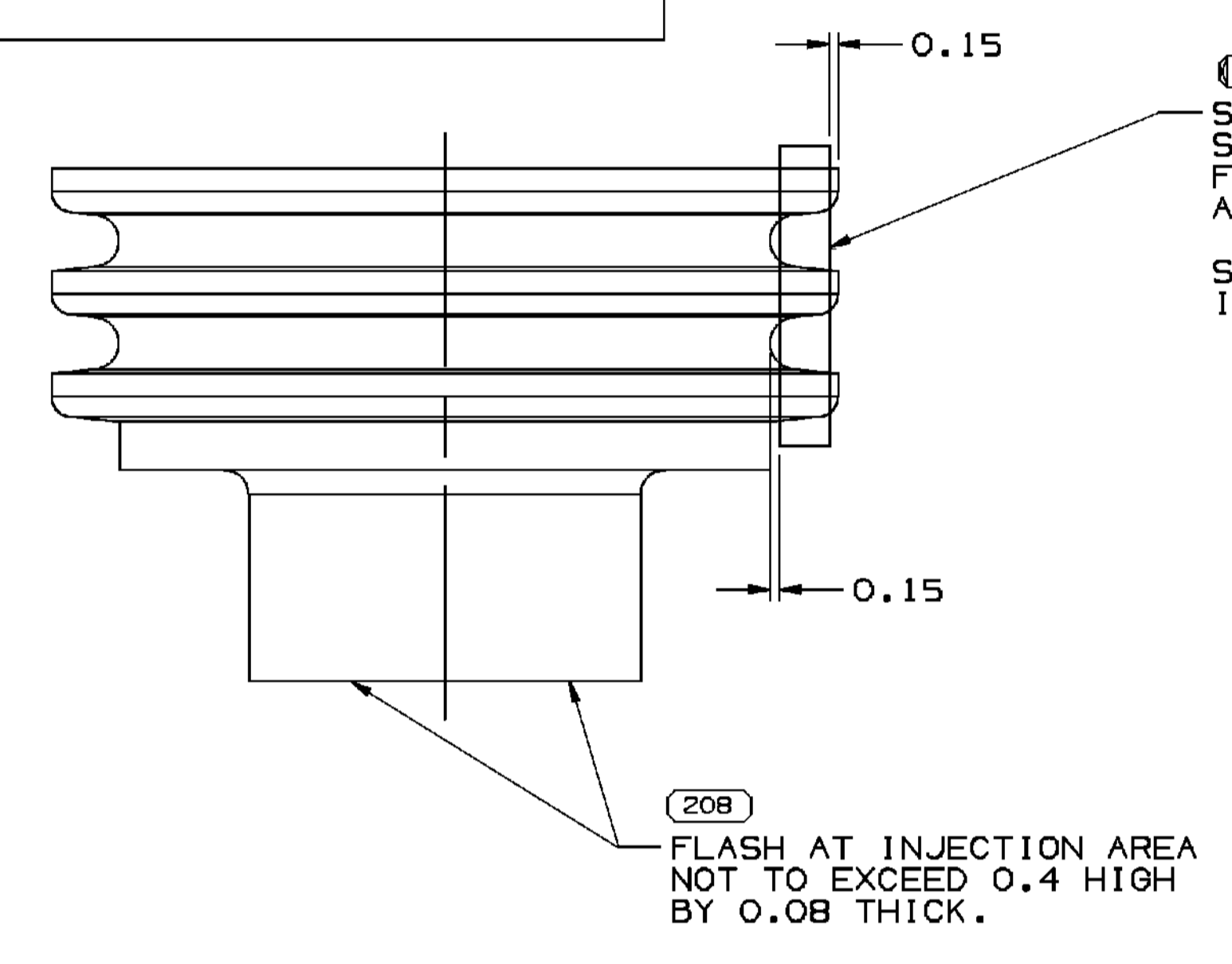


OPTIONAL CONSTRUCTION 1
(ANTI-STICK RING)



OPTIONAL CONSTRUCTION 2
THIS IS THE PREFERRED CONSTRUCTION FOR NEW
TOOL BUILDS
(ANTI-STICK RING)



SEALING RIBS MAY DIFFER AS SHOWN
SECTION -

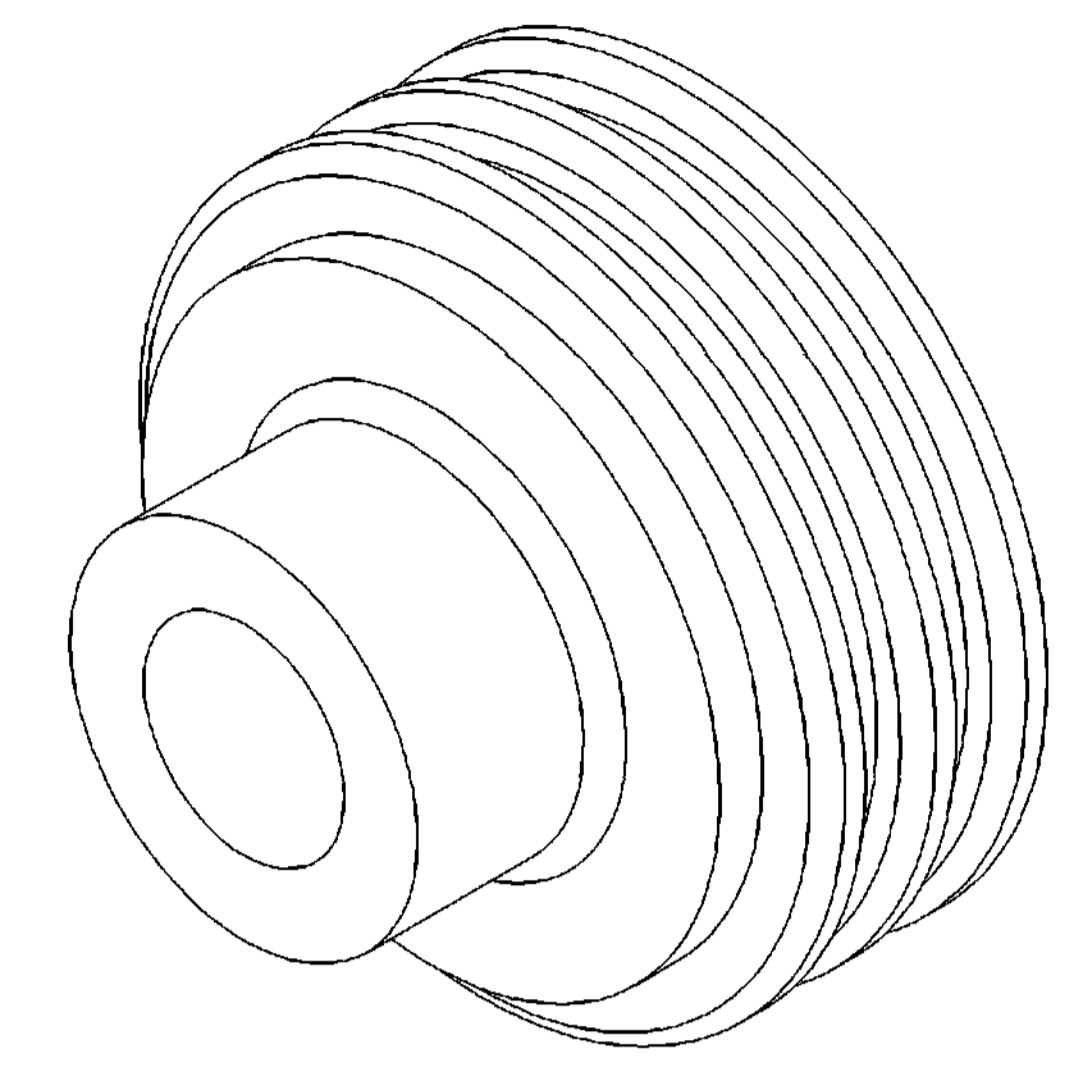
NOTES

- UNLESS OTHERWISE SPECIFIED AND/OR INDICATED: DIMENSIONS ARE TO FACE OF VIEW SHOWN AND AUTOMATICALLY ROUNDED BY COMPUTER FOR INSPECTION. (SEE MATH MODEL FOR PRECISE DIMENSIONS.) FOR ALL OTHER DIMENSIONS NOT SHOWN BUT REQUIRED FOR TOOL BUILD, SEE MATH MODEL FOR PRECISE TOOL PATH DATA. ALL RADII 0.4
- SEALING RIBS ARE IDENTICAL.
- PARTS NOT MADE ON FLASHLESS MOLDS MUST BE DEFLASHED, WASHED AND DRIED AFTER MOLDING. WASHING SHOULD OCCUR WITHIN 8 TO 12 HOURS AFTER MOLDING.
- PARTS ARE TO BE PACKAGED IN SEALED PLASTIC BAGS. GROSS WEIGHT INCLUDING CARTON IS NOT TO EXCEED 34 POUNDS.
- PART NO 12129381 ASSEMBLES TO TERMINAL & SPRING ASSEMBLY 12129414 OR EQUIVALENT.
- PARTS MUST BE MADE FROM VIRGIN MATERIAL ONLY.
- CABLE SEAL DESIGNED FOR CABLE CRIMPED TO 800 SERIES TERMINALS.
- P/N 13727919 MUST BE POST-BAKED FOR 4 HOURS AT 400° F.

PART NO	REV	N/P	STATUS	MATERIAL SPEC	COLOR	ALTERNATE MATERIAL SPEC	CABLE O.D.	A	B	S	CAVITY ID	VOL CM ³	EQUIVALENT CABLE SEAL	NOTES
13727919	01	-	-	M346900B	BLUE	M346600B	4.5-3.61	3.15	3.95	3.15	12.5	0.593	15336703	SEE NOTE B
15393982	01	AE	OBSOLETE	M4361029	TAN	-	5.6-6	5.15	5.55	5.15	12.5	0.479	-	-
15336703	A4	-	RESTRICTED	M226100B	BLUE	-	4.5-3.61	3.15	3.95	3.15	12.5	0.593	15324999	-
15324999	01	AF	-	M346900B	BLUE	-	4.5-3.61	3.15	3.95	3.15	12.5	0.593	15336703	-
15324998	01	AF	-	M3469037	DARK RED	-	4.7-4.54	3.75	4.8	3.75	12.5	0.560	12129381	-
12129381	F6	-	RESTRICTED	M2261019	DARK RED	-	4.7-4.54	3.75	4.8	3.75	12.5	0.560	15324998	-

SYMBOL DEFINITION	TOTAL NO OF INSPECTIONS REQUIRED	LAST NO. USED
A DIMENSION WITHOUT AN INSPECTION REPORT SYMBOL () OR () DOES NOT REQUIRE INSPECTION. IT MAY BE CONTROLLED ON THE INDIVIDUAL COMPONENT DRAWING.	46	
() INDICATES THE DIMENSION IS SHOWN ON THE PART DRAWING AND THE TOOL MUST BE QUALIFIED AT 80% OF THE TOLERANCE SHOWN UNLESS SUPERSEDED BY A "TBT".	224	

DATE	STG	REV	N/P	CHG	ZONE	REVISION HISTORY	AUTH	DR	APVD	APV2
23.JUL.02	R	08	-	-	-	CLEARED REV COL: 15393982 - OBSOLETE	225182	AFM	JAN	JR
030006	R	09	-	-	-	ALL ACTIVE PARTS - REMOVED C,D,E,F,G,H,J & TYPE COLUMNS FROM CHART. TYPE 702. OPTIONAL CONSTRUCTION FOR TYPE 701 & 702 VIEWS. MAT'L SPEC NOTE AND DIMS (2 PLCS); ADDED MAT'L SPEC NUMBER TO CHART. ALTERNATE MAT'L SPEC. SEALING RIBS LABEL. OVERALL LENGTH LABEL. SEALING RIBS VIEWS & NOTE, DIMS (3PLCS); COLUMN 5 AND ANTI-STICK RING OPTIONAL CONSTRUCTION VIEWS; DIM Ø 6.5 WAS Ø C, DIM 3.5 WAS E, DIM 8.5 WAS F, DIM Ø 13.5 WAS Ø G, DIM 1.6 WAS H, DIM Ø 10.8 WAS J; 12129381 & 15336703 - RESTRICTED	285230	JBD	FRG	MPP
25SE08	R	10	-	-	-	13727919 - RELEASED	406199	MMC	MSM	MMC
25.JUN.08	R	11	-	-	-	UPDATE PDM ATTRIBUTES	408319	MSM	MSM	MSM



DRW TYPE	TITLE	VOLUME (OMP)	DISTR CODE
TOOL QUALIFICATION DRAWING	SEE CHART	IND	

DIMENSIONAL RANGE (MM)	SHARP CORNER TOLERANCE
FROM 0 TO >0	±0.1 MAX
>0 TO >20	±0.15 MAX
>20 TO >30	±0.2 MAX
>30 TO >40	±0.25 MAX
>40 TO >50	±0.3 MAX
>50 TO >60	±0.35 MAX
>60 TO >70	±0.4 MAX
>70 TO >80	±0.45 MAX
>80 TO >90	±0.5 MAX
>90 TO >100	±0.55 MAX
>100 TO >150	±0.6 MAX
>150 TO >200	±0.65 MAX
>200 TO >250	±0.7 MAX
>250 TO >300	±0.75 MAX
>300 TO >400	±0.8 MAX

DELPHI
DELPHI PACKARD ELECTRIC SYSTEMS
WARREN, OH

THIS DRAWING IS THE PROPERTY OF DELPHI CORPORATION. NO RIGHTS ARE GRANTED TO USE THIS DRAWING FOR ANY PURPOSE OTHER THAN THE FURNISHING OF SERVICES AND SUPPLIES TO DELPHI CORPORATION.

DR: J. COLDSNOW
APV02: J. COLDSNOW
APV03: R. MAGA
APV04: -

DATE: 160091
160091
180091

DRAWING NAME: TAXI SEAL CBL 1W M/P

DRAWING NUMBER: 12010295

SHEET NO: 1 OF 1
FRM NO: 1
SCALE: 10:1
STG REV: R 11