

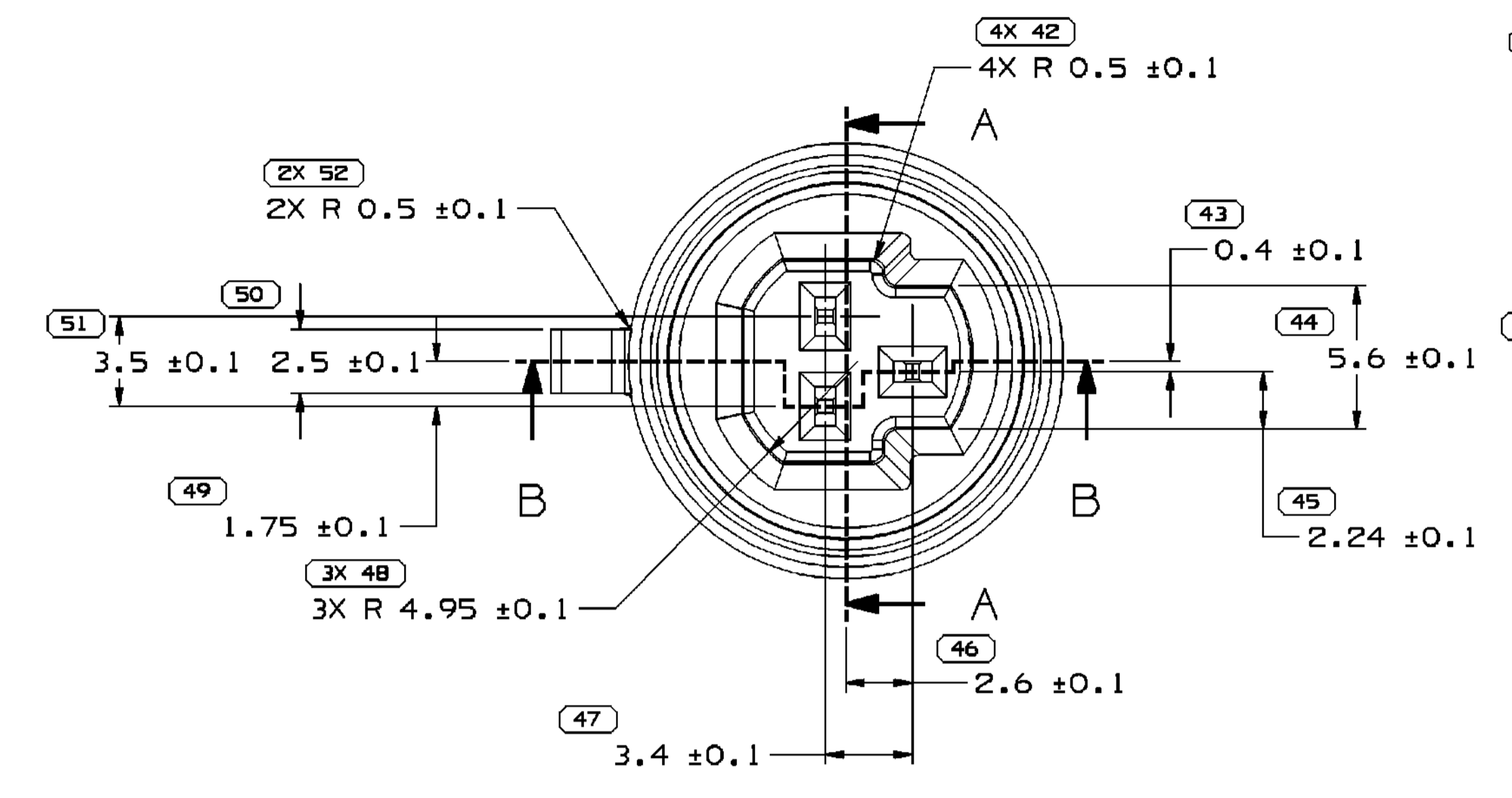
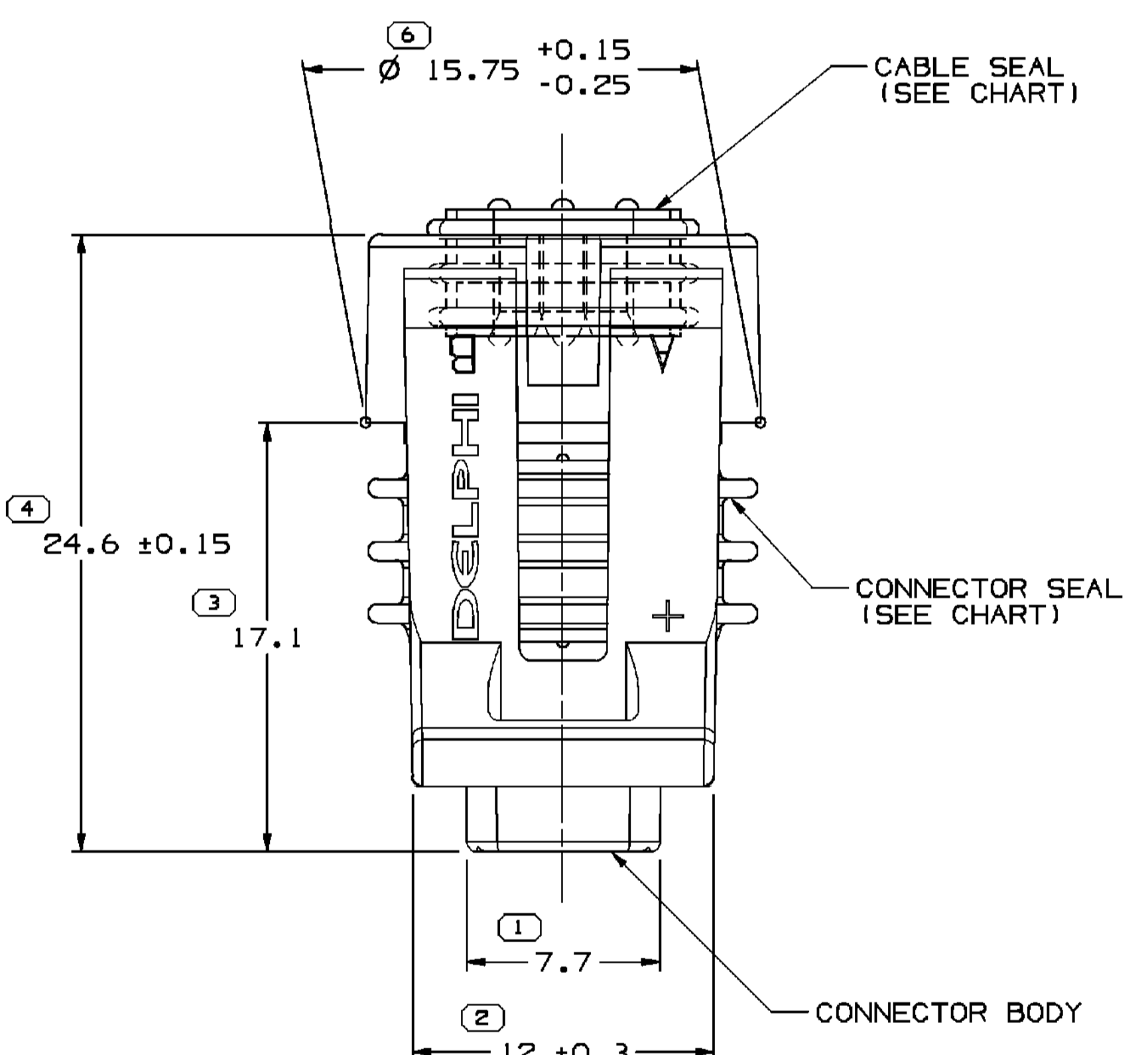
MATING TERMINAL INFORMATION
SCALE 10:1

RECOMMENDED MATERIAL:
P-1546 (CA210) EXTRA SPRING
TEMPER-TIN PLATED BRASS

PLATING THICKNESS: 0.005-0.003 MM

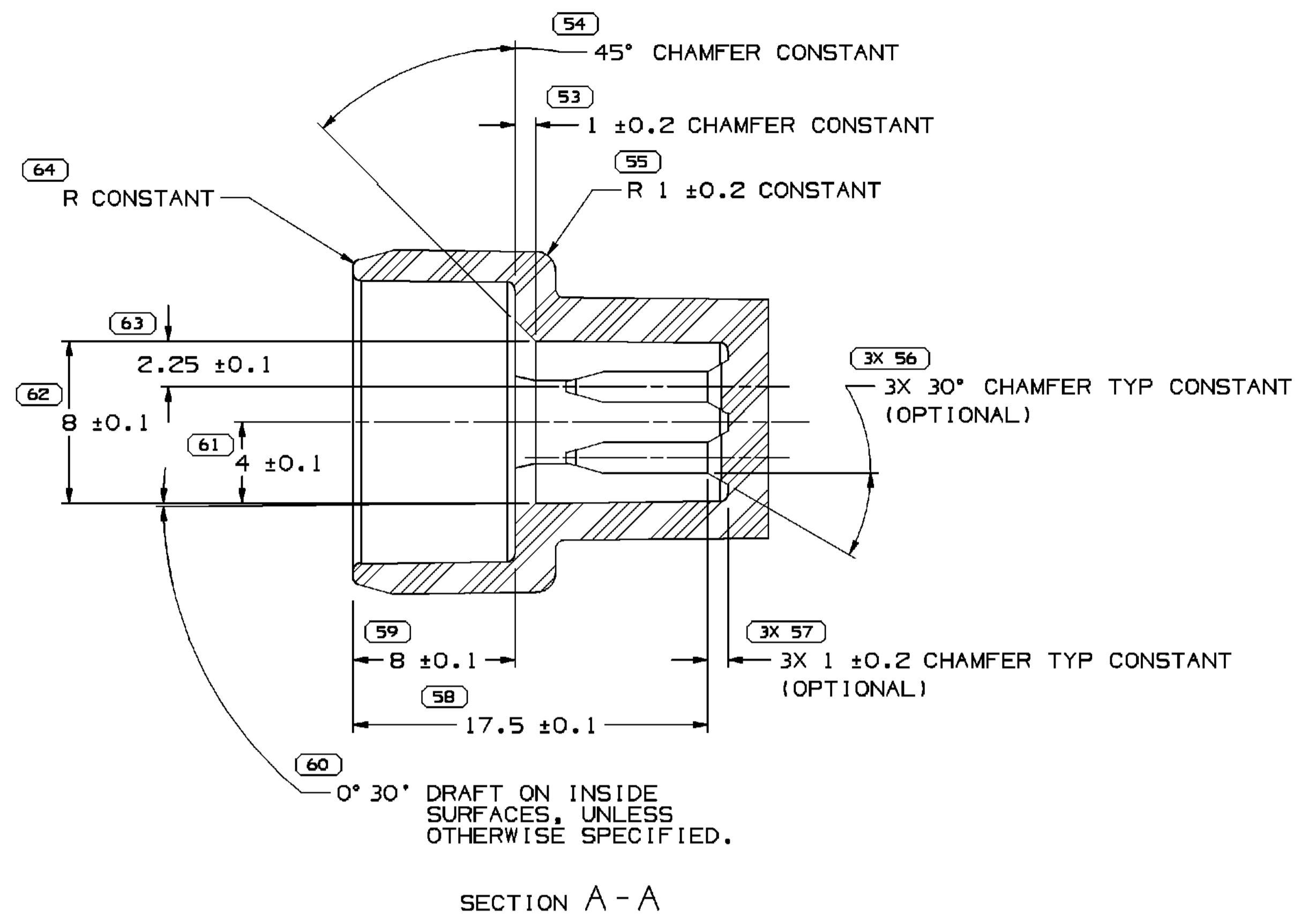
TENSILE STRENGTH: 480-430 MPa

INSPECTION SYMBOLS SHOWN IN THESE VIEWS ARE FOR REFERENCE ONLY



SECTION B-B

INSPECTION SYMBOLS SHOWN IN THESE VIEWS ARE FOR REFERENCE ONLY



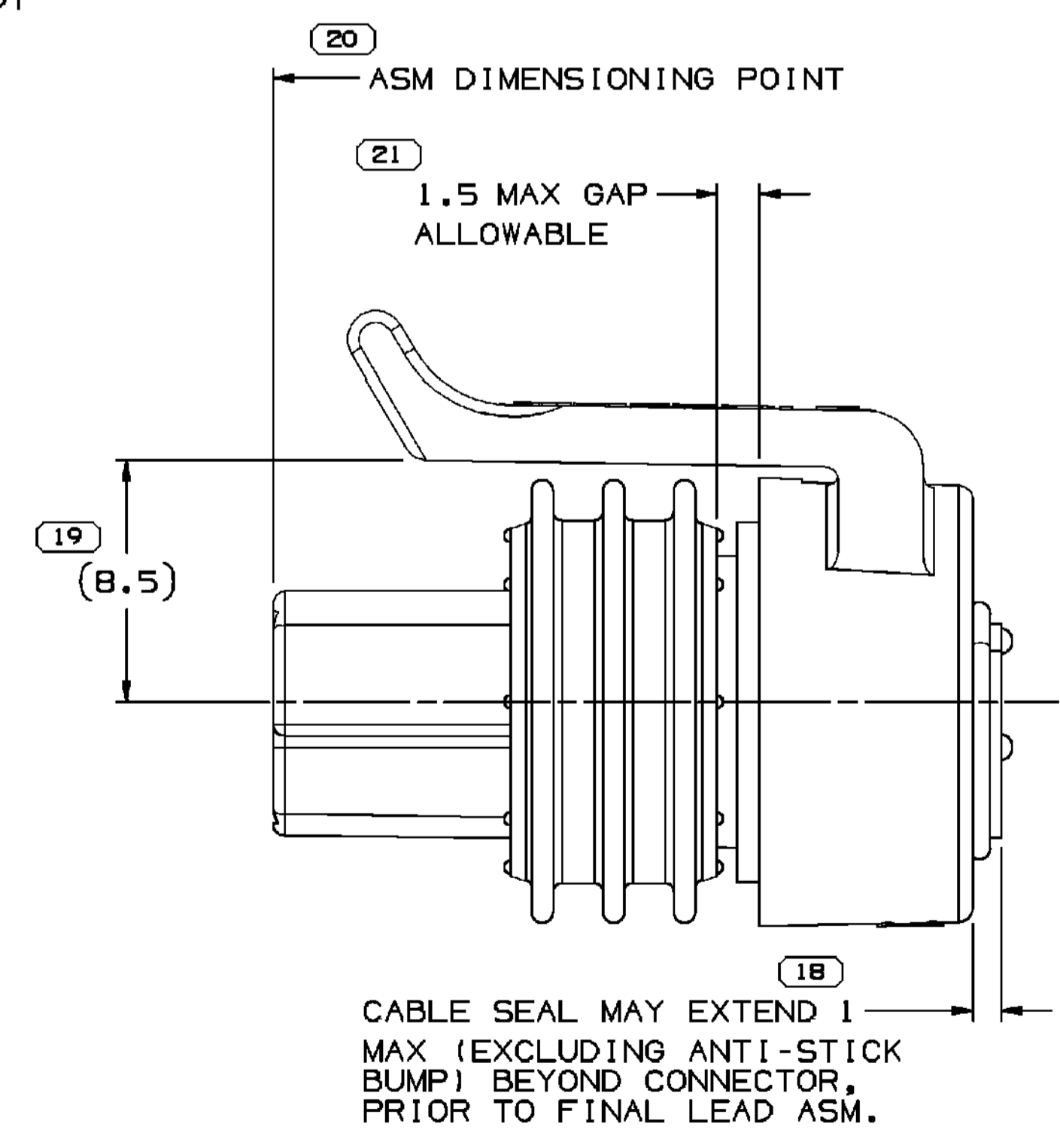
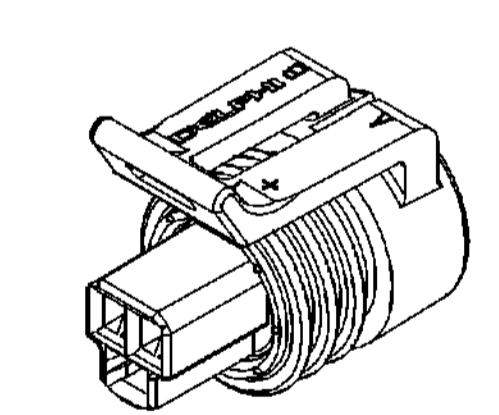
SECTION A-A

MATING CONNECTOR INFORMATION

RECOMMENDED MATERIAL: GLASS-FILLED POLYESTER
M-2192-001-NATURAL

NOTES

- UNLESS OTHERWISE SPECIFIED AND/OR INDICATED: DIMENSIONS ARE TO FACE OF VIEW SHOWN AND AUTOMATICALLY ROUNDED BY COMPUTER FOR INSPECTION (SEE MATH MODEL FOR PRECISE DIMENSIONS). FOR ALL OTHER DIMENSIONS NOT SHOWN BUT REQUIRED FOR TOOL BUILD, SEE MATH MODEL FOR PRECISE TOOL PATH DATA.
- WHEN PARTS ARE SHIPPED THEY MUST BE PACKED IN PLASTIC BAGS OR SHIPPING CONTAINERS MUST BE LINED WITH PLASTIC LINERS. BAGS OR LINERS MUST BE SEALED TO AVOID ENTRY OF FOREIGN MATTER.
- SEALING CODE 3 - DESIGN WILL PASS SALT FOG AND IMMERSION TEST AFTER CONDITIONING AS SPECIFIED IN ESA-644 (WEATHER-PACK), ESA-710 (METRI-PACK), ESA-650 (UNDERHOOD MICRO-PACK), C-4006 (WORLD CONNECTOR), ETC WHEN MATED TO MATING PART OR EQUIVALENT
- THIS PART ACCEPTS THE FOLLOWING COMPONENTS OR EQUIVALENT: CAVITIES TO ACCEPT 12047680 TERMINAL.
- FOR LEAD LENGTH CALCULATIONS, DISTANCE FROM MATING END OF CONNECTOR TO FRONT END OF CABLE CORE IS 10.15/7.05.
- FOR PART NUMBERS WITH ADHESIVE, USE M3510001 OR ADHESIVE APPROVED BY MATERIALS ENGINEERING TO GLUE CONNECTOR SEAL TO CONNECTOR.
- FOR APPLICATION DATA SEE THE INDIVIDUAL APPLICATION DRAWINGS.
- 5-60-T LUBEWELL LUBRICANT CAN BE USED AS AN AUXILIARY SUPPORT ON THE CABLE INSTALLATION PROCESS.



TYPE 101

TYPE 102
SAME AS TYPE 101
EXCEPT AS SHOWN

SYMBOL DEFINITION		TOTAL NO OF INSPECTIONS REQUIRED	77
A DIMENSION WITHOUT AN INSPECTION REPORT SYMBOL DOES NOT REQUIRE INSPECTION. IT MAY BE CONTROLLED ON THE INDIVIDUAL COMPONENT DRAWING.		LAST NO. USED	64

MISSING SYMBOLS		NO MISSING SYMBOL NUMBER	64
-----------------	--	--------------------------	----

OWN STATUS		REVISION HISTORY		AUTH		DR		APVD/APPD	
DATE	STG	REV	N/P	CHG	ZONE				
310C02	R	01	-	-					
CLEARED REVISION COLUMN, REDRAWN TO PD & 15452173 - RELEASED						232301	ECB	JVM	MDB
060C11	R	02	-	-					
ALL PARTS - CREATED APPLICATION DATA						415663	CB0	CB0	SEM
03JA14	R	03	-	-					
ALL PARTS - ADDED LUBEWELL LUBRICANT NOTE						424997	JVR	JVM	KRM

PART NO. WITH ADHESIVE	REV	N/P	PART NO. WITHOUT ADHESIVE	REV	N/P	CONNECTOR	CONNECTOR SEAL	CABLE SEAL & COLOR	
12186689	B3	-	15452173	01	AB	102	12065286	15439078	12065285 - RED
			12186687	A3	-	101	12065286	12186681	12110072 - TAN
			12162226	C3	-	101	12162225	12052893	12078089 - PURPLE
			12110192	B3	-	101	12065286	12052893	12110072 - TAN
			12078090	C3	-	101	12065286	12052893	12078089 - PURPLE
			12065287	B3	-	101	12065286	12052893	12065285 - RED

DIMENSIONAL RANGE (MM)	CHART SET
FROM > 0	> 20
> 20	> 30
> 30	> 40
> 40	> 50
> 50	> 60
> 60	> 70
> 70	> 80
> 80	> 90
> 90	> 100
> 100	> 150
> 150	> 200
> 200	> 250
> 250	> 300
> 300	> 400

THIRD ANGLE PROJECTION	DO NOT SCALE	USE MATH DATA
------------------------	--------------	---------------

DELPHI
CORPORATION
TAXI ASM CONN F/M/P 150 SLD

12078088

DATE: 20-Dec-13 Time: 08:25