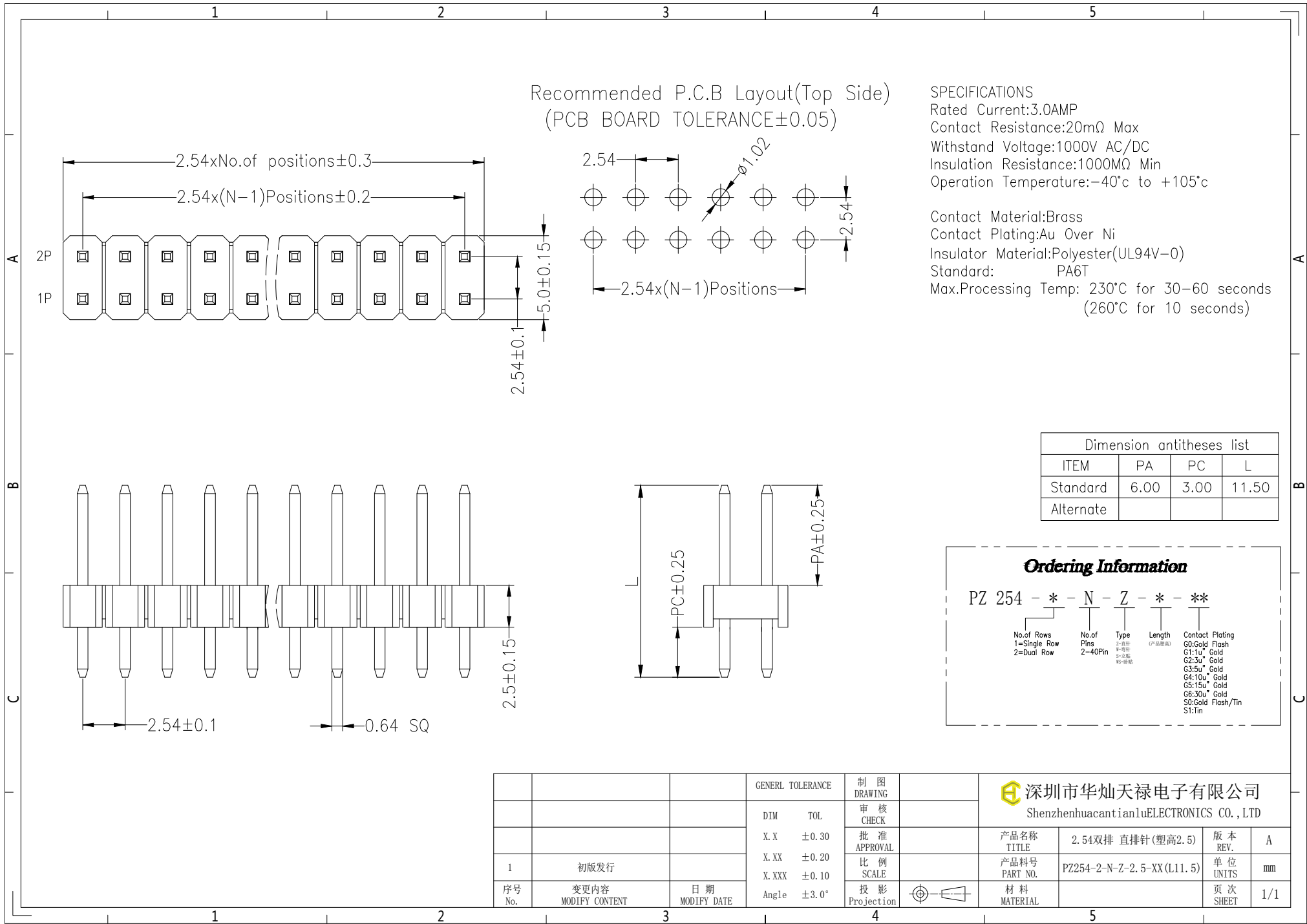


Recommended P.C.B Layout(Top Side)  
(PCB BOARD TOLERANCE±0.05)

SPECIFICATIONS

Rated Current:3.0AMP  
Contact Resistance:20mΩ Max  
Withstand Voltage:1000V AC/DC  
Insulation Resistance:1000MΩ Min  
Operation Temperature:-40°c to +105°c

Contact Material:Brass  
Contact Plating:Au Over Ni  
Insulator Material:Polyester(UL94V-0)  
Standard: PA6T  
Max.Processing Temp: 230°C for 30-60 seconds  
(260°C for 10 seconds)



Dimension antitheses list			
ITEM	PA	PC	L
Standard	6.00	3.00	11.50
Alternate			

**Ordering Information**

PZ 254 - \* - N - Z - \* - \*\*

- No. of Rows: 1=Single Row, 2=Dual Row
- No. of Pins: 2-40Pin
- Type: 2-直插, 8-弯插, S-弯插, 95-弯插
- Length (产品长度)
- Contact Plating: G0:Gold Flash, G1:1u" Gold, G2:3u" Gold, G3:5u" Gold, G4:10u" Gold, G5:15u" Gold, G6:30u" Gold, S0:Gold Flash/Tin, S1:Tin

GENERAL TOLERANCE			制图 DRAWING		深圳市华灿天禄电子有限公司 ShenzhenhuacantianluELECTRONICS CO., LTD			
DIM	TOL		审核 CHECK		产品名称 TITLE	2.54双排 直排针(塑高2.5)	版本 REV.	A
X.X	±0.30		批准 APPROVAL		产品料号 PART NO.	PZ254-2-N-Z-2.5-XX(L11.5)	单位 UNITS	mm
X.XX	±0.20		比例 SCALE		材料 MATERIAL		页次 SHEET	1/1
X.XXX	±0.10		投影 Projection					
Angle	±3.0°							
1	初版发行							
序号 No.	变更内容 MODIFY CONTENT	日期 MODIFY DATE						