

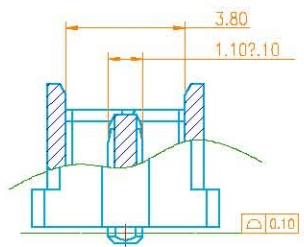
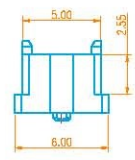
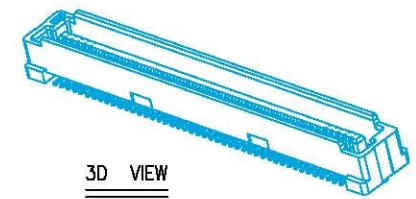
修订 REV	修改摘要 REVISION DESCRIPTION	签名 SIGNATURE	日期 DATE

NOTES:

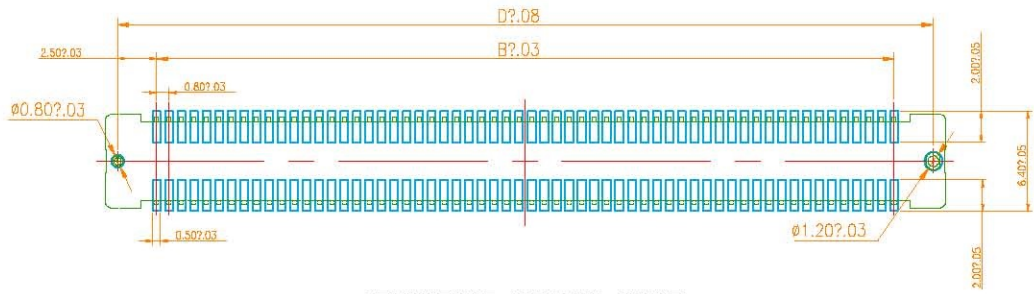
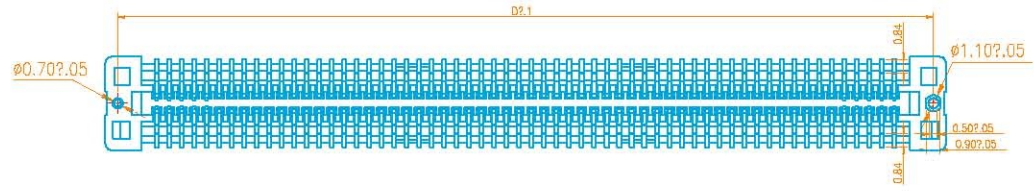
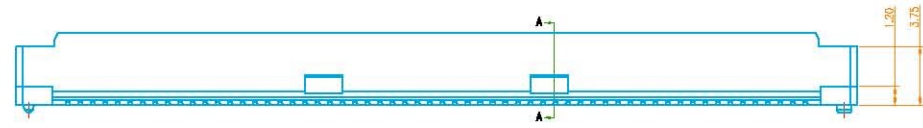
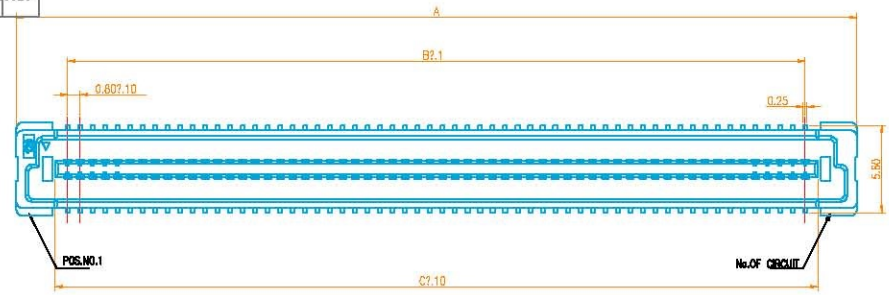
- HUOSING: LCP HIGH-TEMP THERMOPLASTIC UL94V-0 COLOR:BEIGE
- TERMINAL:PHOSPHOR BRONZE
PLATING:1μ" GOLD FLASH OVERALL 50~100μ" NICKEL UNDER PLATED.
- CODING INFORMATION: LXB638-xxP-COR

- PACKING: R: CARRIER REEL
- STANDARD TYPE
- COLOR:BEIGE
- PLUG
- PIN

0.8 BTB
HEIGHT: 38--3.8H
BHCONN BTB CONNECTOR SERIES



NO.of contacts	Dimensions			
	A.	B.	C.	D.
40	21.80	15.20	16.80	20.20
60	29.80	23.20	24.80	28.20
80	37.80	31.20	32.80	36.20
100	45.80	39.20	40.80	44.20
120	53.80	47.20	48.80	52.20
140	61.80	55.20	56.80	60.20
160	69.80	63.20	64.80	68.20
180	77.80	71.20	72.80	76.20
200	85.80	79.20	80.80	84.20



深圳市连欣科技有限公司

制图 (DW):	Kevin	品名 (TITLE):	0.8mm PITCH BTB CONNECTOR PLUG ASSEMBLY 5.0H TYPE			
审核 (CHK):		料号 (PART NO):	XDB638-**P-COR			
批准 (APP):		版本 (REV):	比例 (SCALE):	数量 (QTY):	单位 (UNIT):	
		1	1:1	1000	PCS	

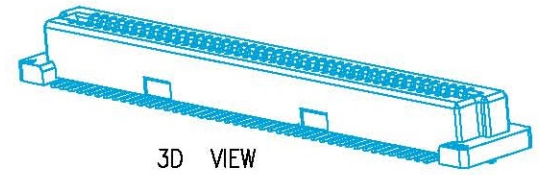
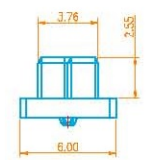


修订 REV	修改摘要 REVISION DESCRIPTION	姓名 DRAWING	日期 DATE

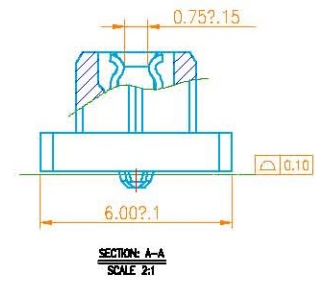
NOTES:

- HUOSING: LCP HIGH-TEMP THERMOPLASTIC UL94V-0 COLOR:BEIGE
- TERMINAL:PHOSPHOR BRONZE
PLATING:1*GOLD FLASH OVERALL 50~100* NICKEL UNDER PLATED.
- CODING INFORMATION: LXB612-**-COR

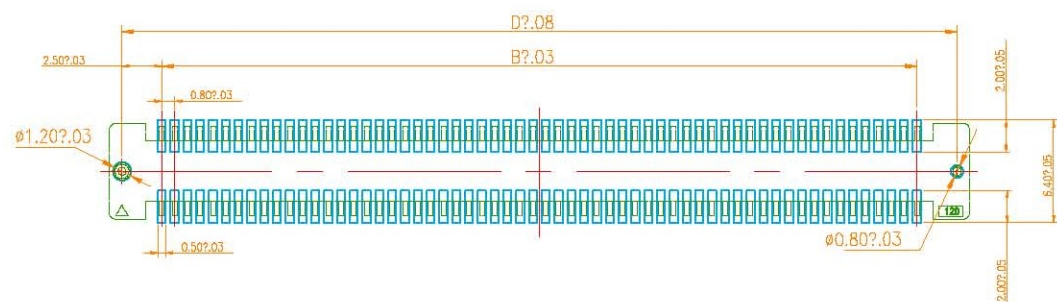
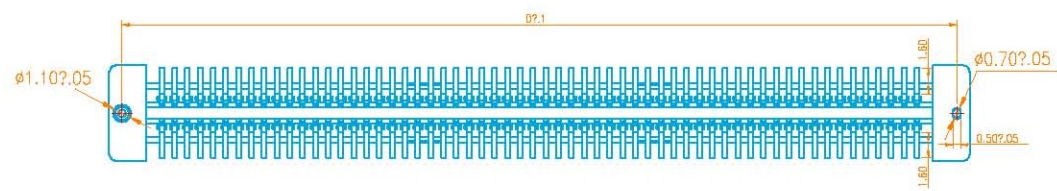
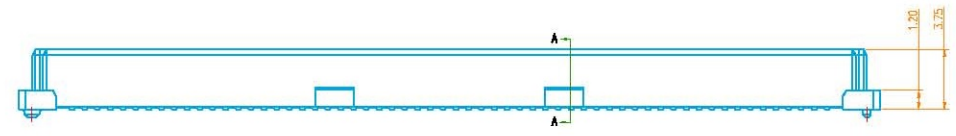
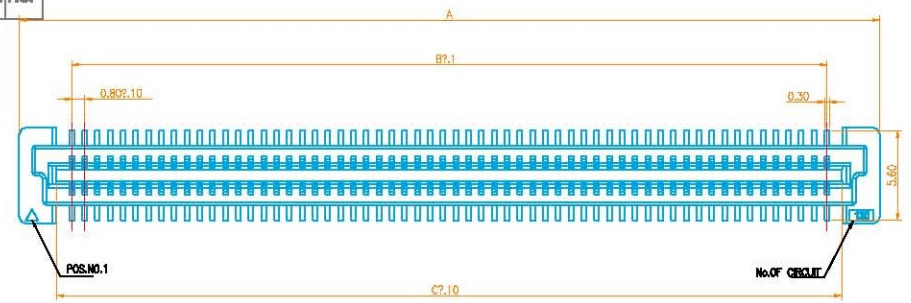
- PACKING: R: CARRIER REEL
- STANDARD TYPE
- COLOR:BEIGE
- RECEPTACLE
- PIN
- PLATING: G:GOLD FLASH
- 0.8 BTB
- HEIGHT: 12--1.2H
- LXWCONN BTB CONNECTOR SERIES



3D VIEW



NO.of contacts	Dimensions			
	A.	B.	C.	D.
40	21.80	15.20	17.10	20.20
60	29.80	23.20	25.10	28.20
80	37.80	31.20	33.10	36.20
100	45.80	39.20	41.10	44.20
120	53.80	47.20	49.10	52.20
140	61.80	55.20	57.10	60.20
160	69.80	63.20	65.10	68.20
180	77.80	71.20	73.10	76.20
200	85.80	79.20	81.10	84.20



RECOMMENDED P.C.BOARD LAYOUT



深圳市连欣科技有限公司

一、般、注、意
 1. 注意
 2. 注意
 3. 注意
 4. 注意
 5. 注意
 6. 注意
 7. 注意
 8. 注意
 9. 注意
 10. 注意

品名(PTNL):	0.8mm PITCH BTB CONNECTOR RECEPTACLE ASSEMBLY 5.0H TYPE			
料号(PART NO):	XDB612-**-COR			
版本(VER):	比例(SCAL):	图例(SYMB):	张数(SHEET):	单位(UNIT):
1.0	1:1	A	1 OF 1	mm