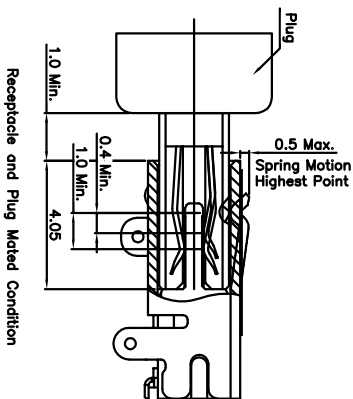
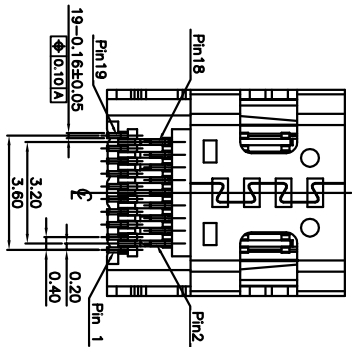
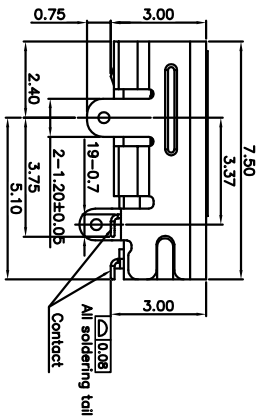
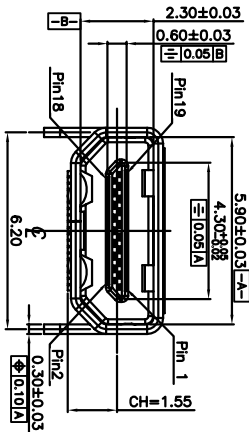
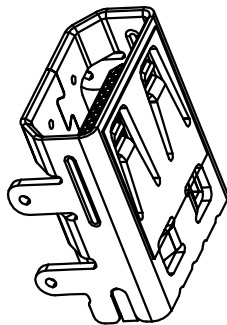
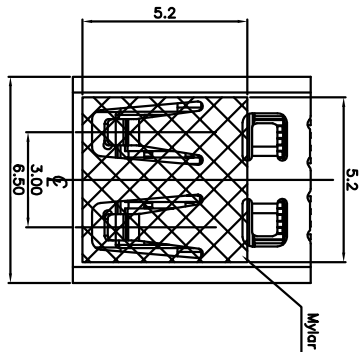
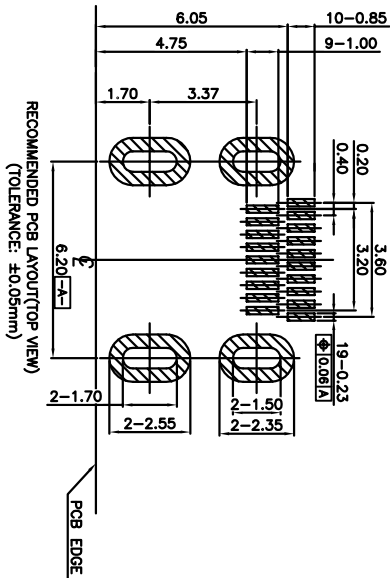


CUSTOMER DRAWING



- Notes:
- Materials
 - Housing: LCP+30% G/F, Black, UL94 V-0;
 - Contact: Phosphor Copper (C5191), Gold Plating at mating area, Matte Tin or Au Plating at solder tail, all over Nickel;
 - Shell: Phosphor Copper (C5191);
 - Ratings
 - Current Rating: 0.3A ;
 - Operating Temperature: -40℃ ~ 85℃;
 - Electrical Requirement:
 - LLCR: Excluding Conductor Resistance 10mΩ Max (Target design value), Contact: 30mΩ Max. changed (Final), Shell: 50mΩ Max. Changed (Final);
 - Dielectric Withstanding Voltage: 150V AC (RMS) for 1 minute (Mated), 250V AC (RMS) for 1 minute (Unmated);
 - Insulation Resistance: 10MΩ Min. @ 150V DC (Mated), 100MΩ Min. @ 500V DC (Unmated);
 - Mechanical Performance:
 - Insertion force: 44.1N (4.5kgf) Max.;
 - Withdrawal force: 4.9~25N (0.5~2.5kgf);
 - Durability life: 5,000 Cycles;
 - IR Reflow: the peak temperature on board shall be maintained for 10 seconds at 260℃.



PIN	Signal Assignment
1	Hot Plug Detect
2	Utility
3	TMD5 Data2+
4	TMD5 Data2 Shield
5	TMD5 Data2-
6	TMD5 Data1+
7	TMD5 Data1 Shield
8	TMD5 Data1-
9	TMD5 Data0+
10	TMD5 Data0 Shield
11	TMD5 Data0-
12	TMD5 Clock+
13	TMD5 Clock Shield
14	TMD5 Clock-
15	CEC
16	DDC/CEC Ground
17	SDL
18	SDA
19	+5V Power

UNIT	mm	DRAWN	Kysin Qin	2016/08/20
GENERAL TOLERANCE	CHK.			
DISTANCE	±0.30	APPD.		
	±0.20	MATERIAL	SEE NOTES	
	±0.15	FINISH	SEE NOTES	
	±0.10			
ANGLE				
	±2.0°			
	±1.0°			

深圳市连欣科技有限公司

HDMI Type D 19Pin,
板上型CH=1.55,双排SMT,外壳全插

XDHF-1709-0617B

LXDF-DO2

PART NO.	DWG. NO.	SCALE	SIZE	SHEET	1 of 2	REV.	X1
		1:1	A4				

REV.	ECN NO.	PRELIMINARY DESCRIPTION	DWG.	CHECK	APPR.
X1					

A

B

C

D

E

F

G

1

2

3

4

5

6

7

8

9

10