
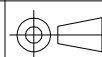


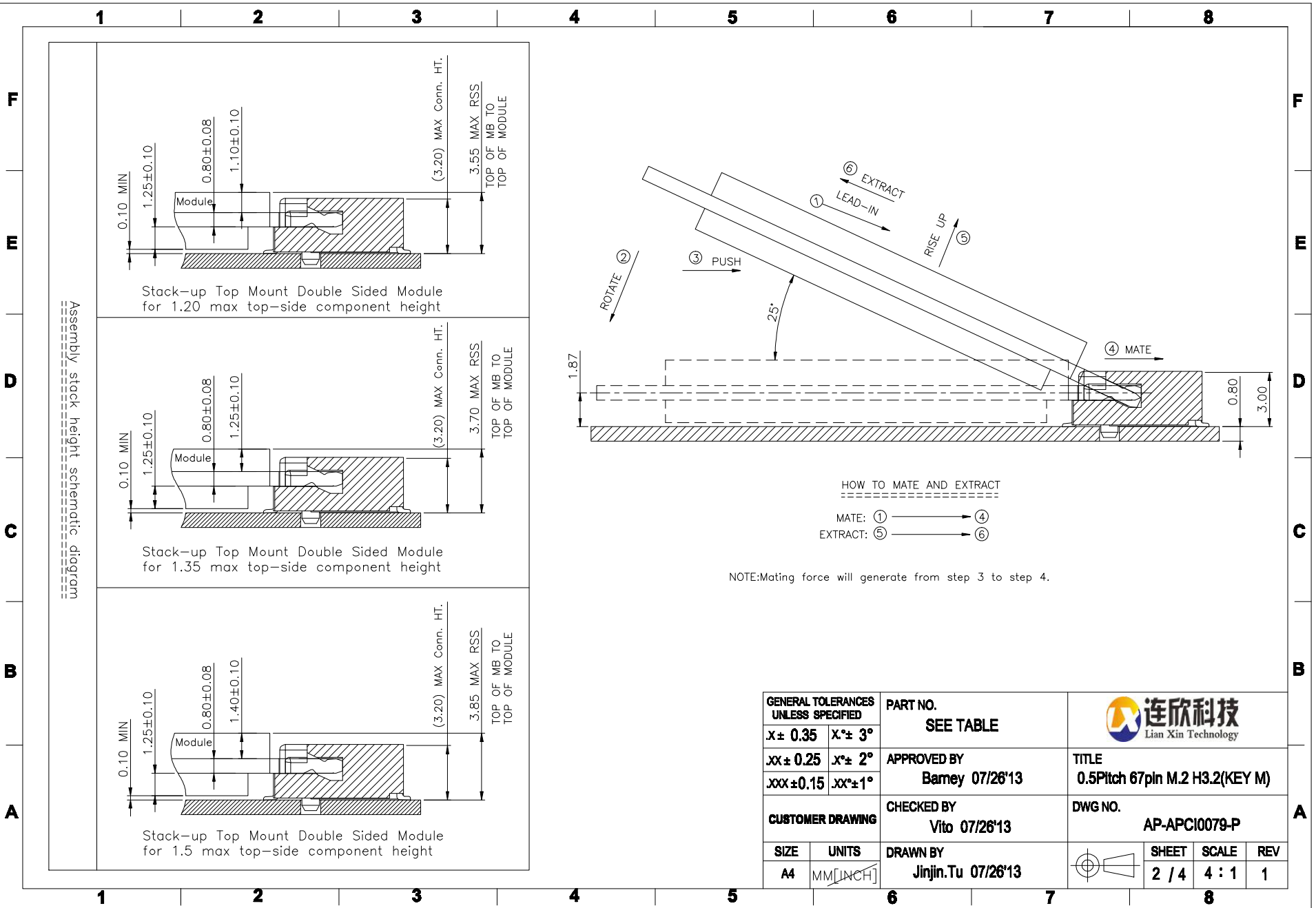
REV.	ECR/N NO./DESCRIPTION	DATE	DRAWN	CHECKED	APPROVE
1	SN14040	05/06'14	Jinjin.Tu	Vito	Barney

- NOTES:
- MATERIAL SPECIFICATION:
 - HOUSING: LCP+40%GF, UL94V-0, COLOR: BLACK.
 - CONTACT: COPPER ALLOY.
 - SMT TAB: S50C.
 - PLATING SPECIFICATION:
 - CONTACT:
 - 50u" MIN. NICKEL UNDER PLATING OVER ALL. G/F PLATING ON SOLDER AREA. GOLD PLATING ON CONTACT AREA: SEE TABLE
 - SMT TAB:
 - 50u" MIN. NICKEL UNDER PLATING OVER ALL. 80u" MIN. MATTE TIN PLATING ON SOLDER AREA.
 - HF COMPLIANT, ROHS COMPLIANT.
 - DATE CODE: XXXXXX
 - DAY
 - WEEK
 - YEAR
 - MECHANICAL PERFORMANCE:
 - DURABILITY: SEE TABLE
 - ELECTRICAL PERFORMANCE:
 - CURRENT: 0.5A PER PIN.
 - LLCR: INITIAL 55mΩ MAX.; FINAL ΔLLCR=20mΩ MAX..
 - IR REFLOW:
 - THE TEMPERATURE SHALL BE 260±5°C MAINTAINING 10±1 SECONDS.
 - PRODUCT NUMBER NOTE

A	B	C	D	E	F	G	H	I	J	K	L	M	N	O	P	Q	R	S	T	U	V	W	X	Y	Z
PACKING TYPE										PRODUCT SERIAL NUMBER															
K: RoHS COMPLIANT/P: HF COMPLIANT										TYPE SERIAL NUMBER															
PRODUCT TYPE										FINISHED PRODUCT															

PART NO.	CONTACT PLATING	DURABILITY
APCI0079-P001A	30u" MIN. GOLD	60 CYCLES.
APCI0079-P002A	1~3u" MIN. GOLD	25 CYCLES.
APCI0079-P003A	10u" MIN. GOLD	25 CYCLES.

GENERAL TOLERANCES UNLESS SPECIFIED		PART NO.	 Lian Xin Technology						
X ± 0.35	X ± 3°	SEE TABLE							
.XX ± 0.25	.X ± 2°	APPROVED BY Barney 07/26'13	TITLE 0.5Pitch 67pin M.2 H3.2(KEY M)						
.XXX ± 0.15	.XX ± 1°	CHECKED BY Vito 07/26'13	DWG NO. AP-APCI0079-P						
SIZE	UNITS	DRAWN BY Jinjin.Tu 07/26'13	 <table border="1"> <tr> <th>SHEET</th> <th>SCALE</th> <th>REV</th> </tr> <tr> <td>1 / 4</td> <td>4 : 1</td> <td>1</td> </tr> </table>	SHEET	SCALE	REV	1 / 4	4 : 1	1
SHEET	SCALE	REV							
1 / 4	4 : 1	1							
A4	MM [INCH]								



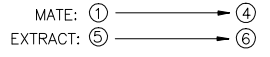
Assembly schematic diagram

Stack-up Top Mount Double Sided Module for 1.20 max top-side component height


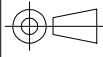
Stack-up Top Mount Double Sided Module for 1.35 max top-side component height

Stack-up Top Mount Double Sided Module for 1.5 max top-side component height

HOW TO MATE AND EXTRACT



NOTE: Mating force will generate from step 3 to step 4.

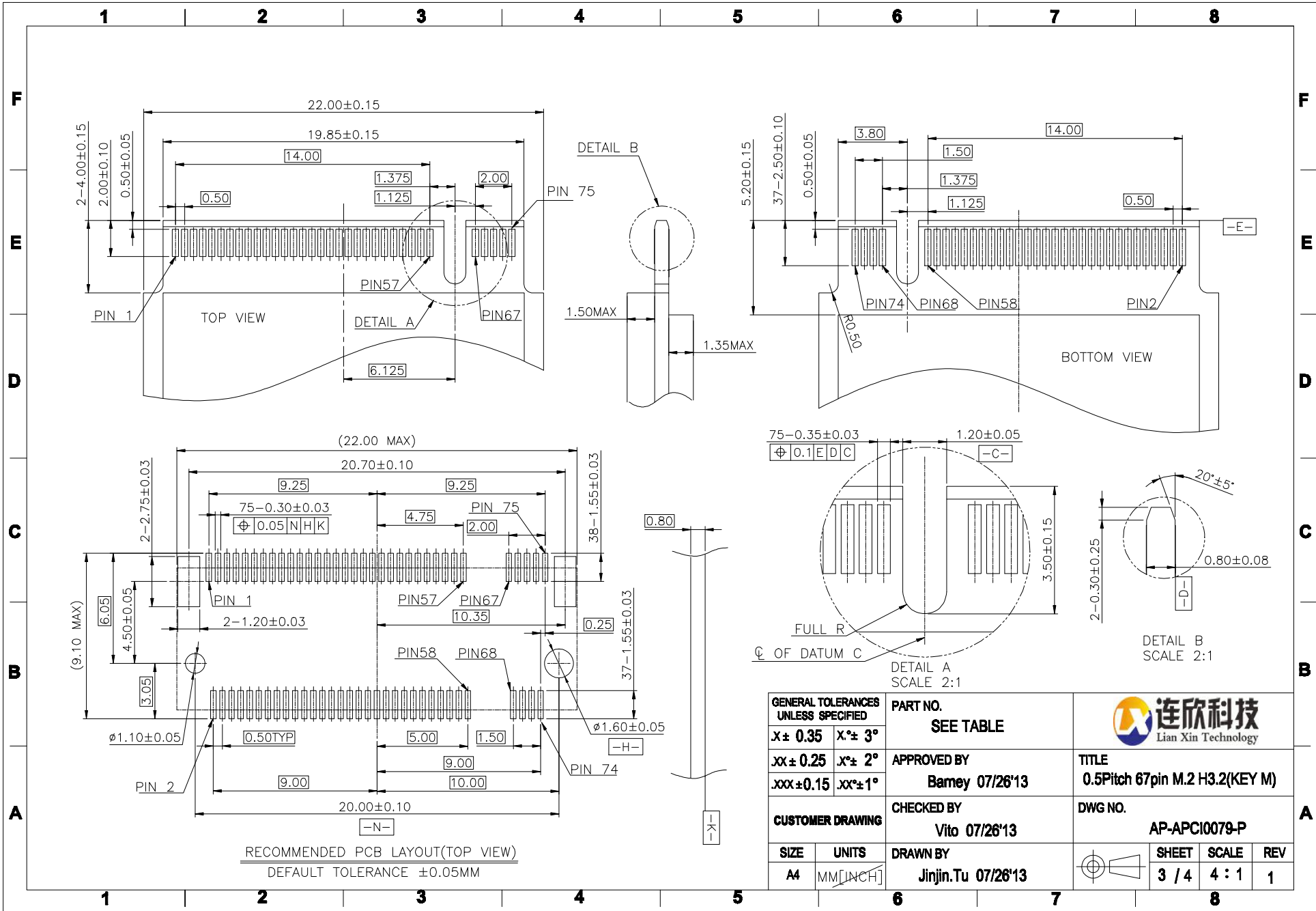
GENERAL TOLERANCES UNLESS SPECIFIED		PART NO.	 Lian Xin Technology		
$X \pm 0.35$	$X^\circ \pm 3^\circ$	SEE TABLE			
$JX \pm 0.25$	$JX^\circ \pm 2^\circ$	APPROVED BY	TITLE		
$JXX \pm 0.15$	$JXX^\circ \pm 1^\circ$	Barney 07/26'13			
CUSTOMER DRAWING		CHECKED BY	DWG NO.		
		Vito 07/26'13			
SIZE	UNITS	DRAWN BY	 SHEET SCALE REV		
A4	MM [INCH]	Jinjin.Tu 07/26'13			



TITLE
0.5Pitch 67pin M.2 H3.2(KEY M)

DWG NO.
AP-APCI0079-P

SHEET 2 / 4
SCALE 4 : 1
REV 1



GENERAL TOLERANCES UNLESS SPECIFIED		PART NO. SEE TABLE	 Lian Xin Technology			
X±0.35	X°±3°					
XX±0.25	X°±2°	APPROVED BY Barney 07/26'13	TITLE 0.5Pitch 67pin M.2 H3.2(KEY M)			
XXX±0.15	.XX°±1°	CHECKED BY Vito 07/26'13	DWG NO. AP-APCI0079-P			
CUSTOMER DRAWING		DRAWN BY Jinjin.Tu 07/26'13		SHEET 3 / 4	SCALE 4 : 1	REV 1

